



NM 599 Phase A Interchange Corridor Study

Public Information Meeting

October 6, 2009



Study Process

- Phase A Initial Evaluation of Alternatives
 - Evaluate Existing Conditions and Constraints
 - Determine Need for Project
 - Public Involvement
 - Identify Feasible Alternatives
 - Alternatives from original study, design team, public
- Phase B Detailed Evaluation of Alternatives
 - Additional Evaluation of Feasible Alternatives
 - Priority Plan for Public Funding

Existing NM 599 Access Points

Access Point	Existing Condition	Right-of-way for Interchange
NM 14	Signalized Intersection	No
Interstate 25	Interchange	Yes
I-25 Frontage Road	Signalized Intersection	No
Airport Road	Signalized Intersection	Yes
County Road 62	Unsignalized Intersection	Yes
County Road 70 (Via Veteranos)	Unsignalized Intersection	No
Camino la Tierra / Paseo Nopal	Interchange	Yes
Ephriam Road	Unsignalized Intersection	Yes
Camino de los Montoyas	Unsignalized Intersection	Yes
Ridgetop Road	Interchange	Yes
US 84/285	Interchange	Yes

Additional Allowable Access Points

Access Point	Existing Condition	Right-of-way for Interchange
Jaguar Road	None	Yes
Caja del Rio	None	No



Statement of Purpose & Need

- NM 599 must continue to function as a relief route for the City of Santa Fe and as an alternative route for hazardous waste transport from Los Alamos around the populated areas of Santa Fe. Improved access to or across NM 599 is needed for all modes of travel as the area continues to develop. There is public perception that improvements are needed to address safety concerns, particularly at existing at-grade intersections.
- The purpose of the project is to develop a prioritization plan that addresses the access issues and supports economic development, regional transportation and long range planning goals.



Next Steps

- Public Input on Alternatives
- Draft Phase B Report
- Draft Priority Plan for Public Funding
- Public Information Meeting on Preferred Alternatives by February 2010

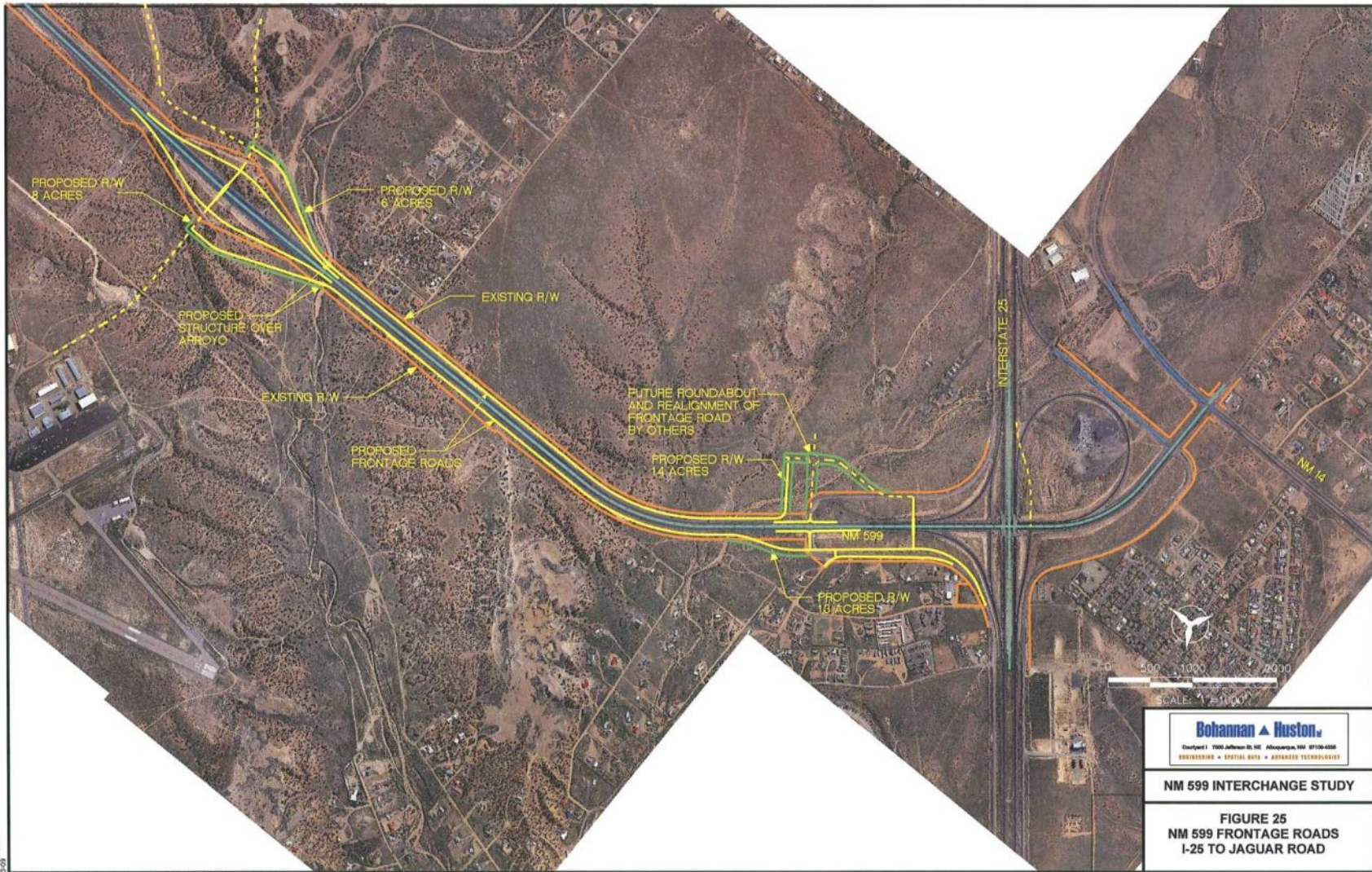


11-11-2009 10:05

\\070064\Frame\Study\Graphics\Report\Figures\070064-02\Frontage.dgn



11-AUG-2009 10:10
 p:\070064\Frame\Study\Graphics\Report\Figures\070064-Jaguar.dgn



Bohannon & Huston

Company 1700 Jefferson St. NE Albuquerque, NM 87104-4555
 ENGINEERING • SPATIAL DATA • ADVANCED TECHNOLOGIES

NM 599 INTERCHANGE STUDY

**FIGURE 25
 NM 599 FRONTAGE ROADS
 I-25 TO JAGUAR ROAD**

12-20-2009
 12:07
 p:\070064\Trans\Study\Graphics\Report\Figures\070064-25 to Jaguar FFI rd.dwg



Bohannon & Huston

Company: 1800 Johnson Dr. NE Albuquerque, NM 87109-4300
 ENGINEERING • SPATIAL DATA • ADVANCED TECHNOLOGIES

NM 599 INTERCHANGE STUDY

FIGURE 26
NM 599 FRONTAGE ROADS
JAGUAR ROAD
TO AIRPORT ROAD

12/14/2009

p:\070084\From\Study\Graphics\Report Figures\070084-Jaguar to Airport FRI rd.dgn



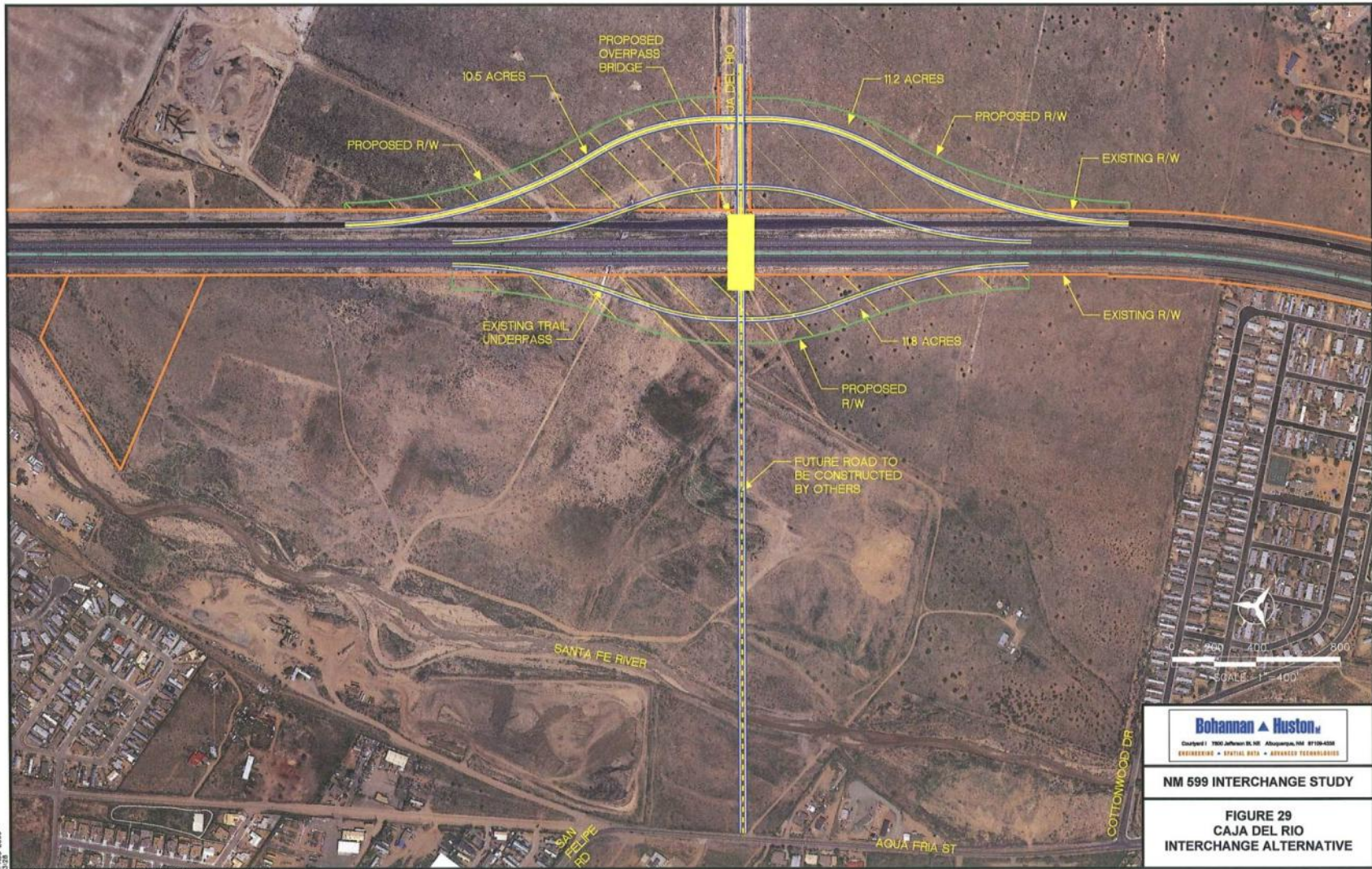
<p>Bohannon & Huston</p> <p><small>Company 1700 Jefferson St. NE Albuquerque, NM 87104-4300</small></p> <p><small>ENGINEERING • SPATIAL DATA • ADVANCED TECHNOLOGIES</small></p>
<p>NM 599 INTERCHANGE STUDY</p>
<p>FIGURE 27</p> <p>AIRPORT ROAD</p> <p>INTERCHANGE ALTERNATIVE</p>

12-20-2009
 pr:\0700584\Fram\Study\Graphics\Report\Figures\0700584-AirporLdgs

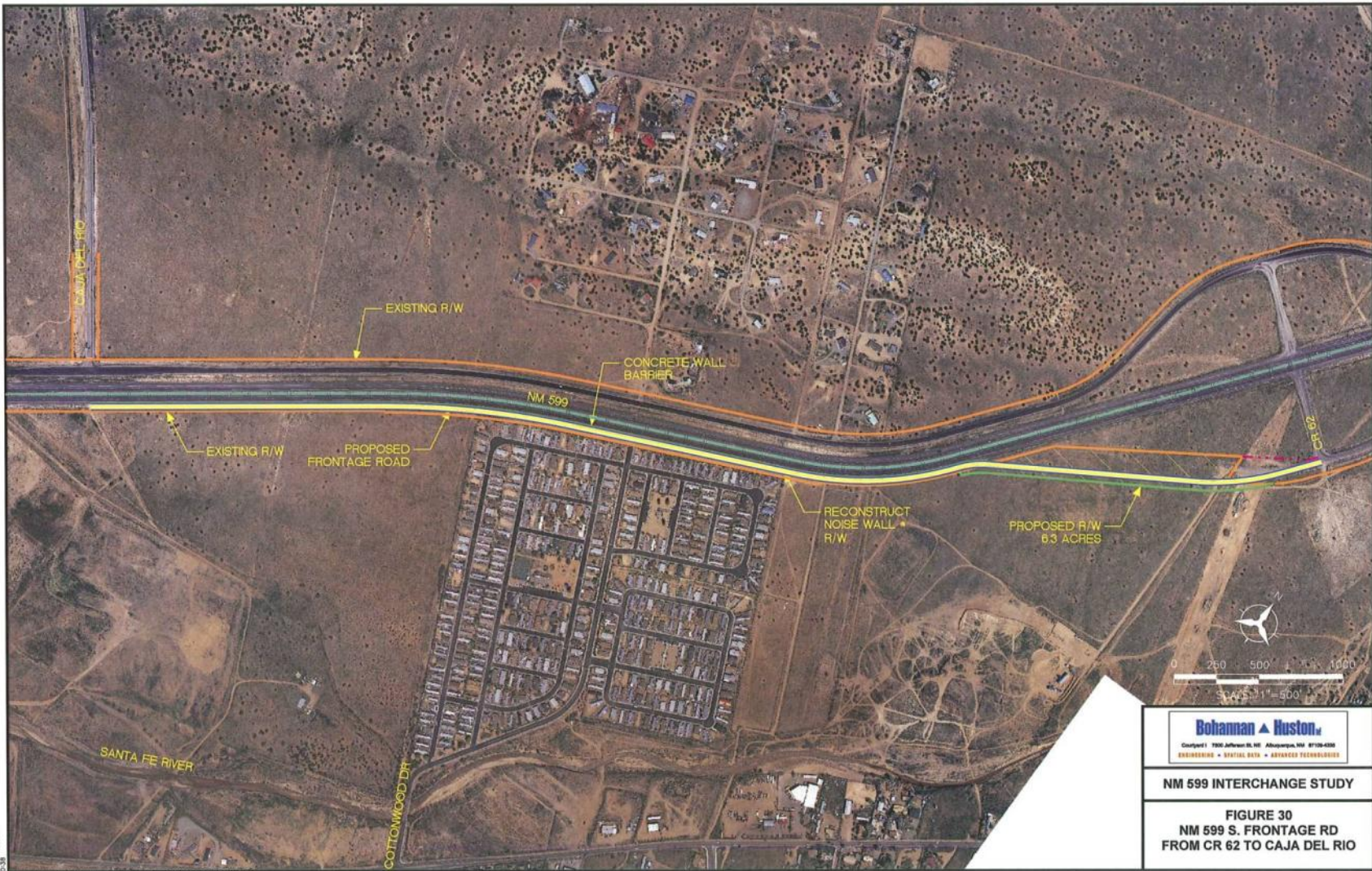


12-26-2009

p:\070084\Trans\Study\Graphics\Report\Figures\070084-SF_River_Bridge.dgn



10/16/2009 10:28 AM
 p:\1070054\1\Draw\1\Graphics\Report\Figures\1070054-Caja-del-Rio.dwg

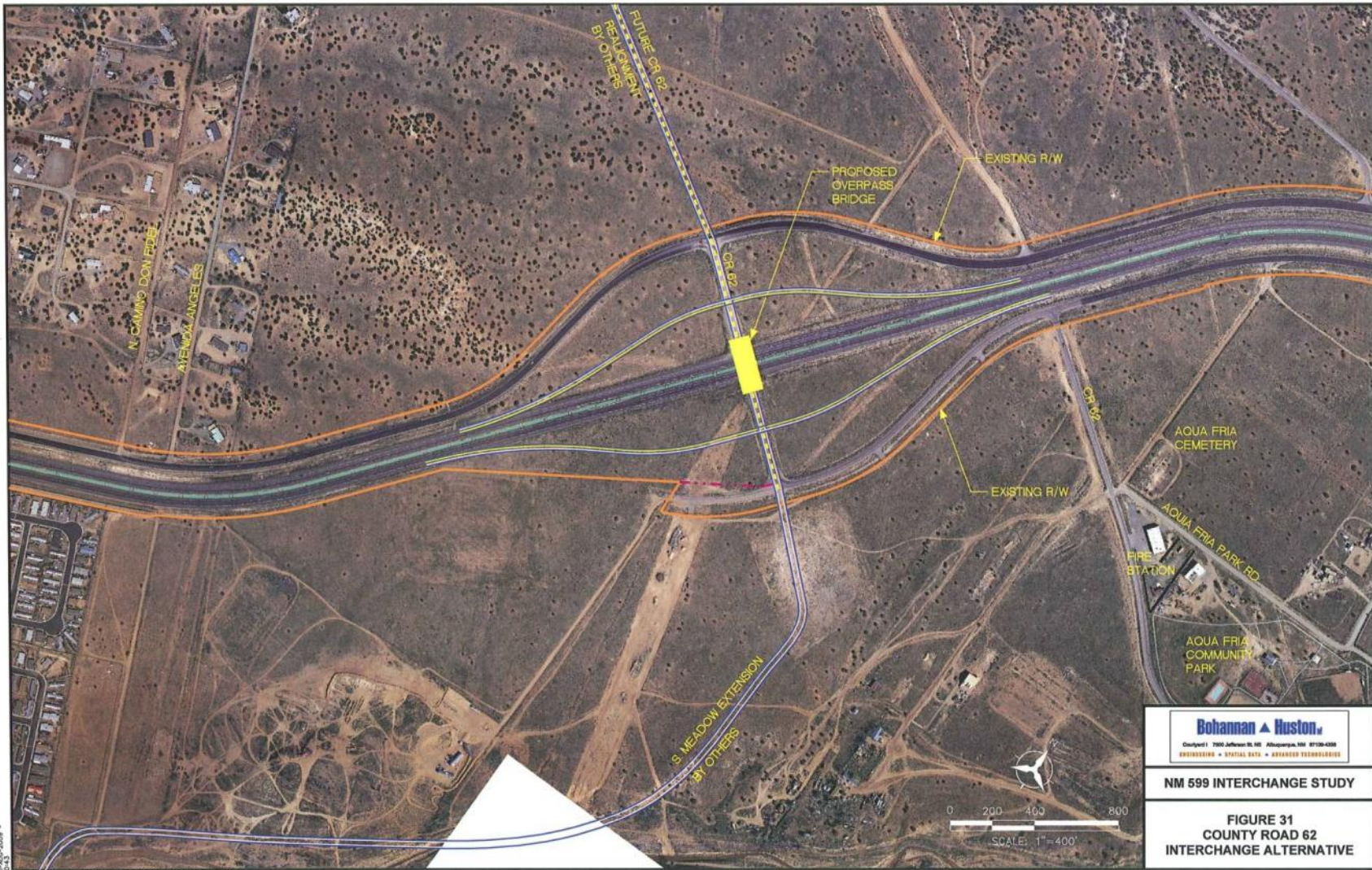


Bohannon & Huston
 Company 1700 Johnson St. NE, Albuquerque, NM 87109-4300
 ENGINEERING • SURVEYING • DESIGN • ADVANCED TECHNOLOGIES

NM 599 INTERCHANGE STUDY

FIGURE 30
NM 599 S. FRONTAGE RD
FROM CR 62 TO CAJA DEL RIO

12-10-2009
 pr:\070064\Trans\Study\Graphics\Report\Figures\070064-Caja-S frt rd.dgn



Bohannon & Huston

Owned by 7500 Jefferson St. NE Albuquerque, NM 87110-4338
 ENGINEERING • SPATIAL DATA • ADVANCED TECHNOLOGIES

NM 599 INTERCHANGE STUDY

**FIGURE 31
 COUNTY ROAD 62
 INTERCHANGE ALTERNATIVE**

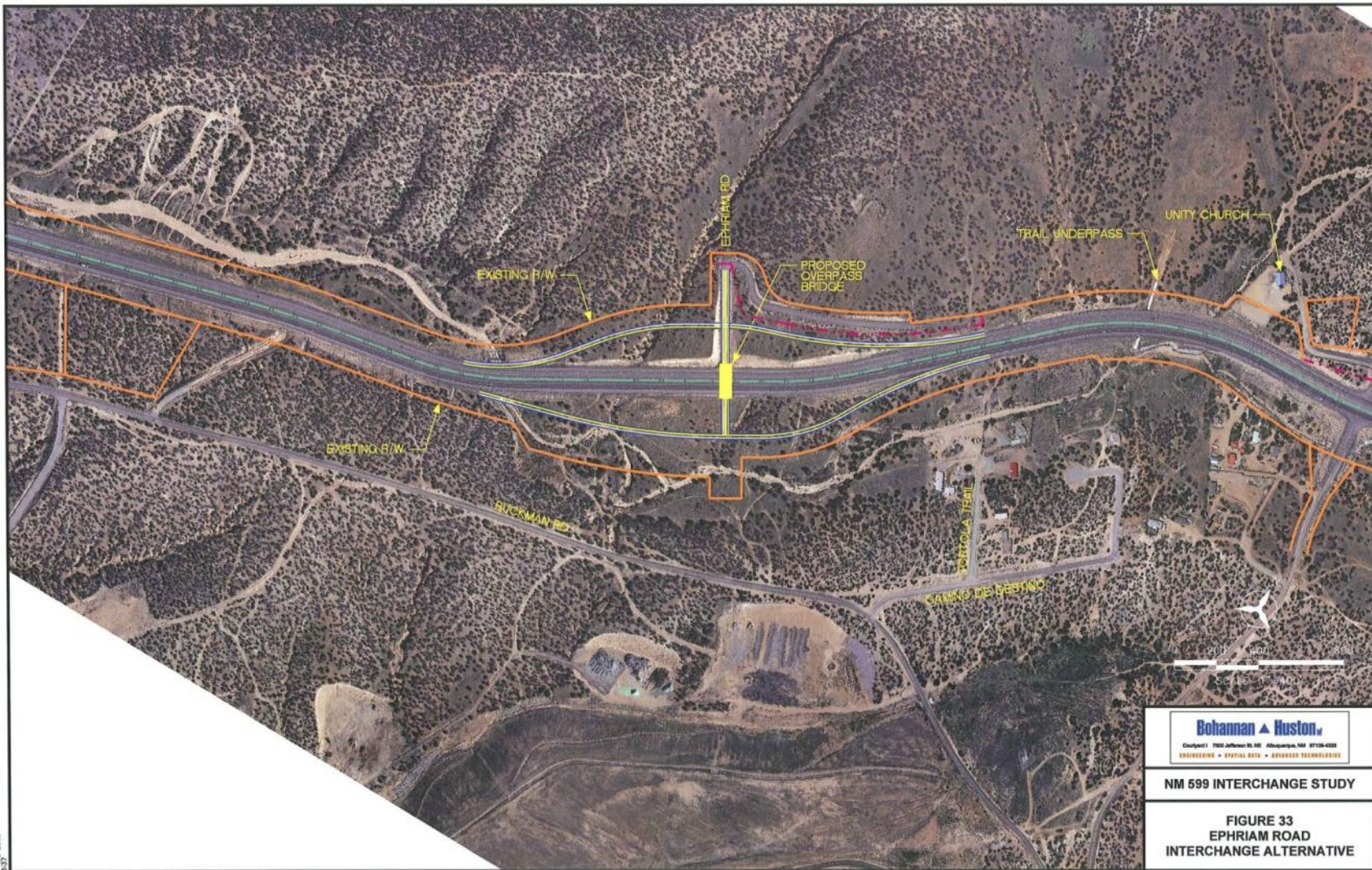
12/14/12-3009

g:\070064\Irons\Study\Graphics\Report\Figures\070064-CR62.dgn



12/14/2008
 12:47

p:\070064\Trans\Study\Graphics\Report\Figures\070064-CR70.dwg

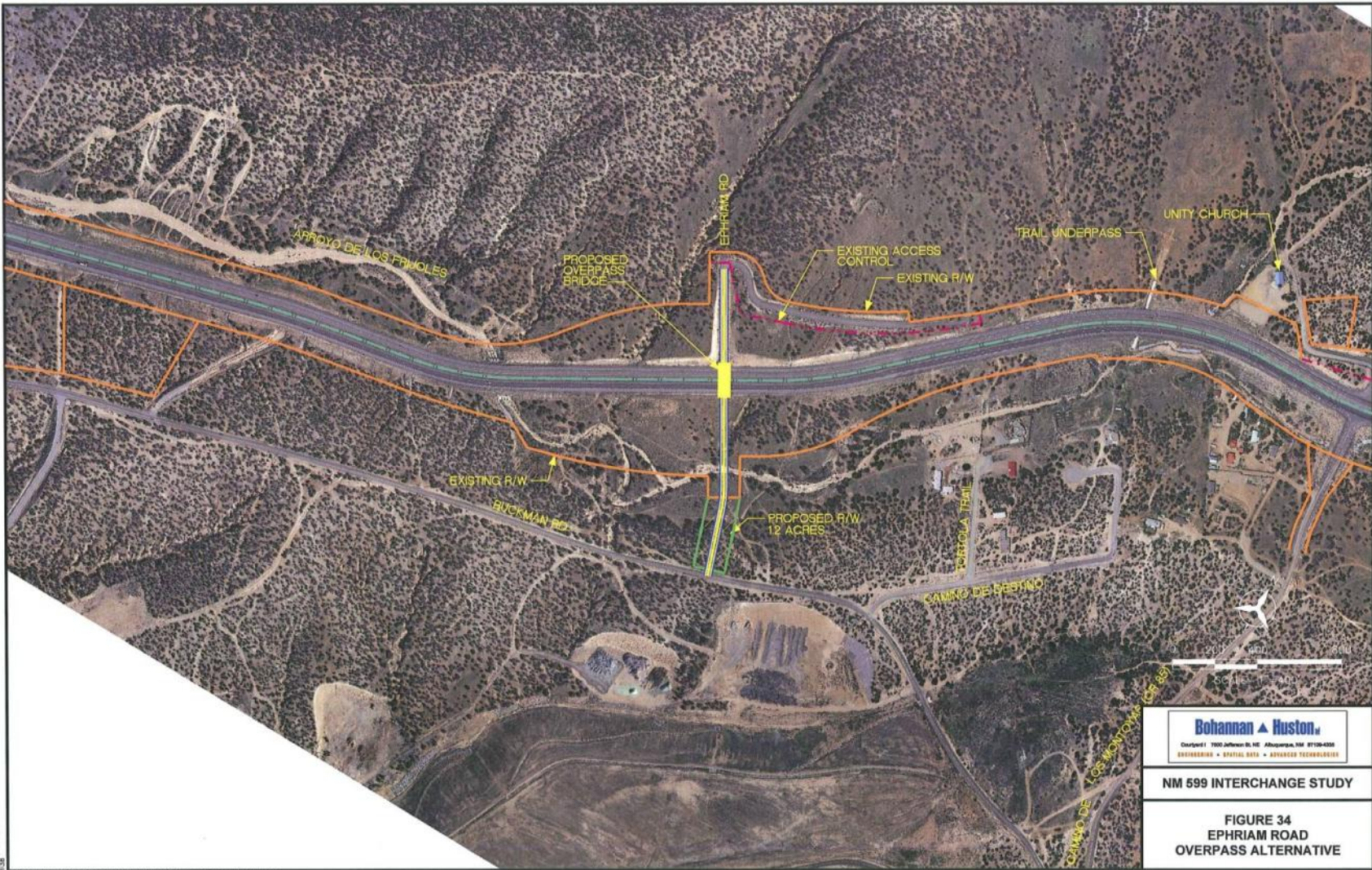


Bohannon & Huston
 Company 1 7500 Jefferson St. NE Albuquerque, NM 87110-0338
 ENGINEERING • SPATIAL DATA • ADVANCED TECHNOLOGIES

NM 599 INTERCHANGE STUDY

**FIGURE 33
 EPHRIAM ROAD
 INTERCHANGE ALTERNATIVE**

10-10-2008
 p:\070064\Trans\Graphics\Report\Figures\070064-Ephriam.dwg



11-16-2004

pr:\070084\Trans\Study\Graphics\Report\Figures\070084-Ephriam Overpass.dwg



11-10-2009 - 11:41

pr:\070064\1\Draw\Study\Graphics\Report\Figures\070064-085.dgn

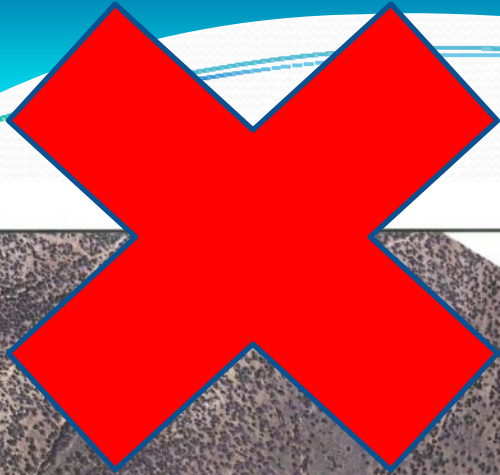


Bohannon & Huston
 Civil/Envl 1500 Jefferson St. SE Albuquerque, NM 87106-4308
 ENGINEERING • SPATIAL DATA • ADVANCED TECHNOLOGIES

NM 599 INTERCHANGE STUDY

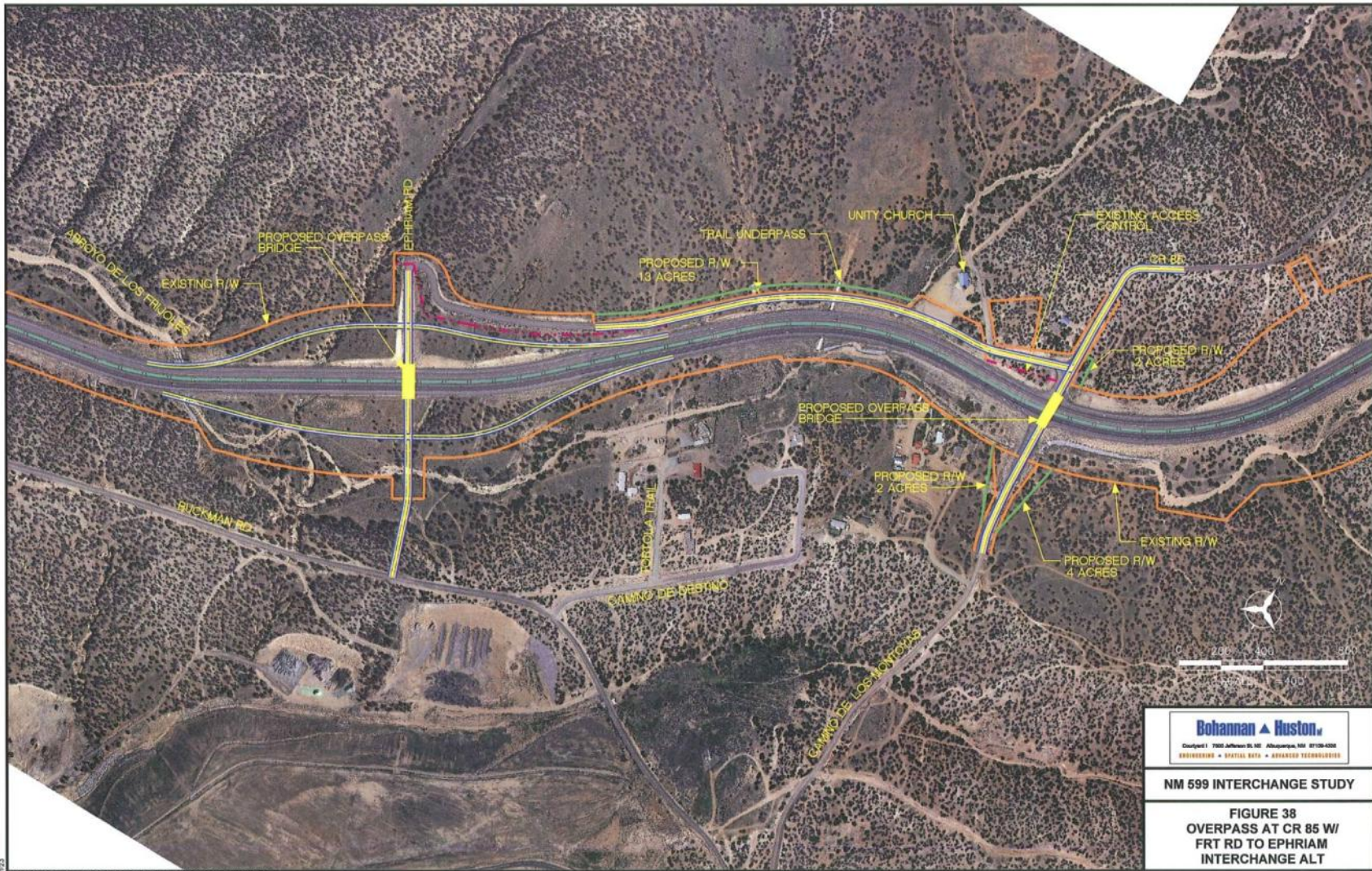
FIGURE 36
CAMINO DE LOS MONTOYAS
INTERCHANGE 1/3 MILE
NORTH ALTERNATIVE

12/16/2008
 p:\0700564\Tran\Study\Graphics\Report\Figures\0700564-CDM.dgn



Eliminated from further consideration.





Bohannon & Huston
 1700 Jefferson St. SE, Albuquerque, NM 87102-0001
 ENGINEERING • SPATIAL DATA • ADVANCED TECHNOLOGIES

NM 599 INTERCHANGE STUDY

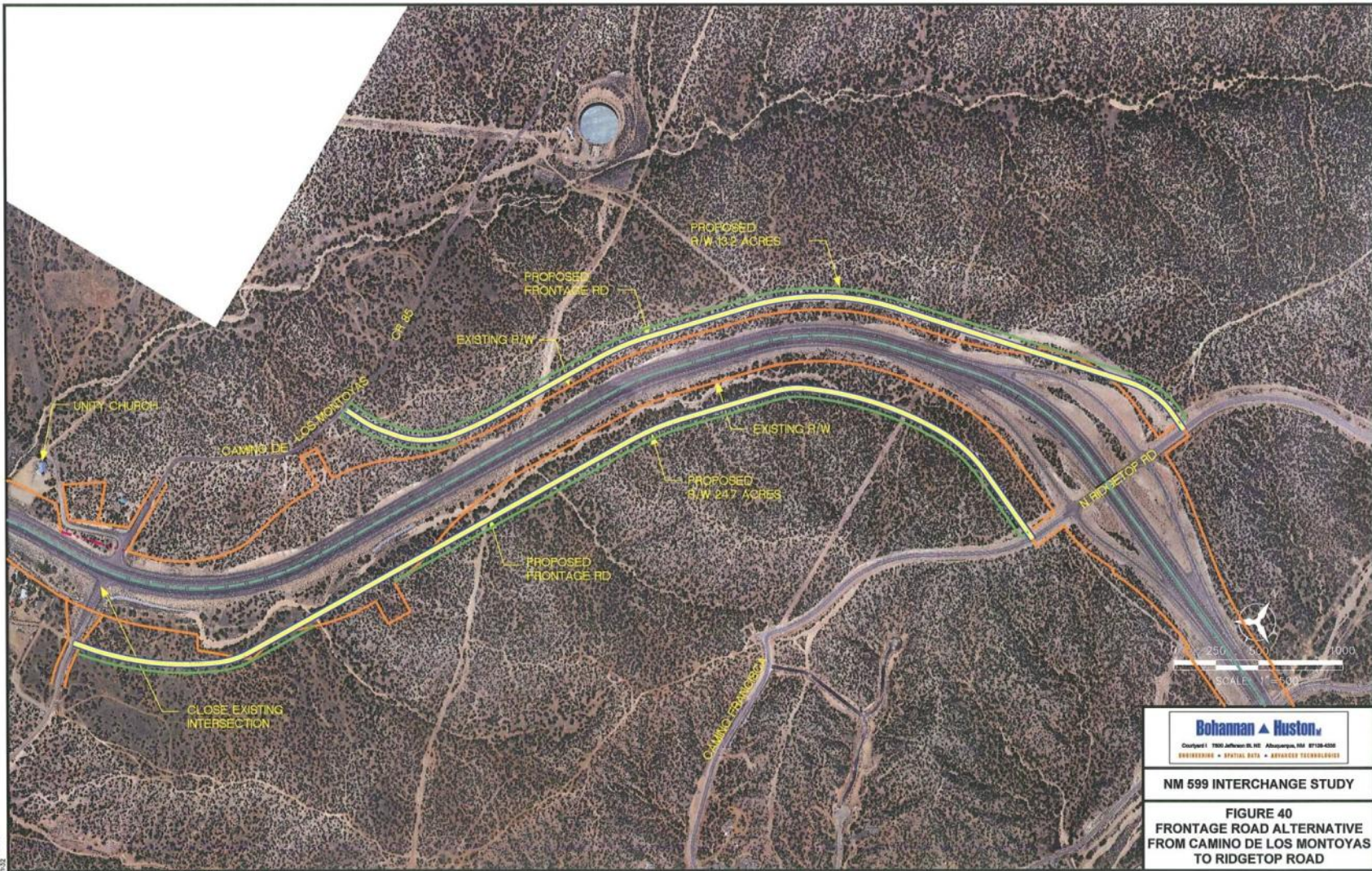
**FIGURE 38
 OVERPASS AT CR 85 W/
 FRT RD TO EPHRIAM
 INTERCHANGE ALT**

11/16/2009
 p:\070054\Tran\Study\Graphics\Report\Figures\070054-Ephriam - N Frt Rd.dgn



11-17-2009

p:\070084\Trans\Study\graphics\Report1\Figures\070084-CDLM OVERPASS W CR 85 INT.dgn



Bohannon & Huston
 2001 West 17th Street, Suite 100, Albuquerque, NM 87104-4000
 ENGINEERING • SURVEYING • DESIGN • CONSTRUCTION TECHNOLOGIES

NM 599 INTERCHANGE STUDY

FIGURE 40
FRONTAGE ROAD ALTERNATIVE
FROM CAMINO DE LOS MONTOYAS
TO RIDGETOP ROAD

11/14/2008
 pr:\070084\Trans\Study\Graphics\Report\Figures\070084-CDM to Ridgetop F1.dgn

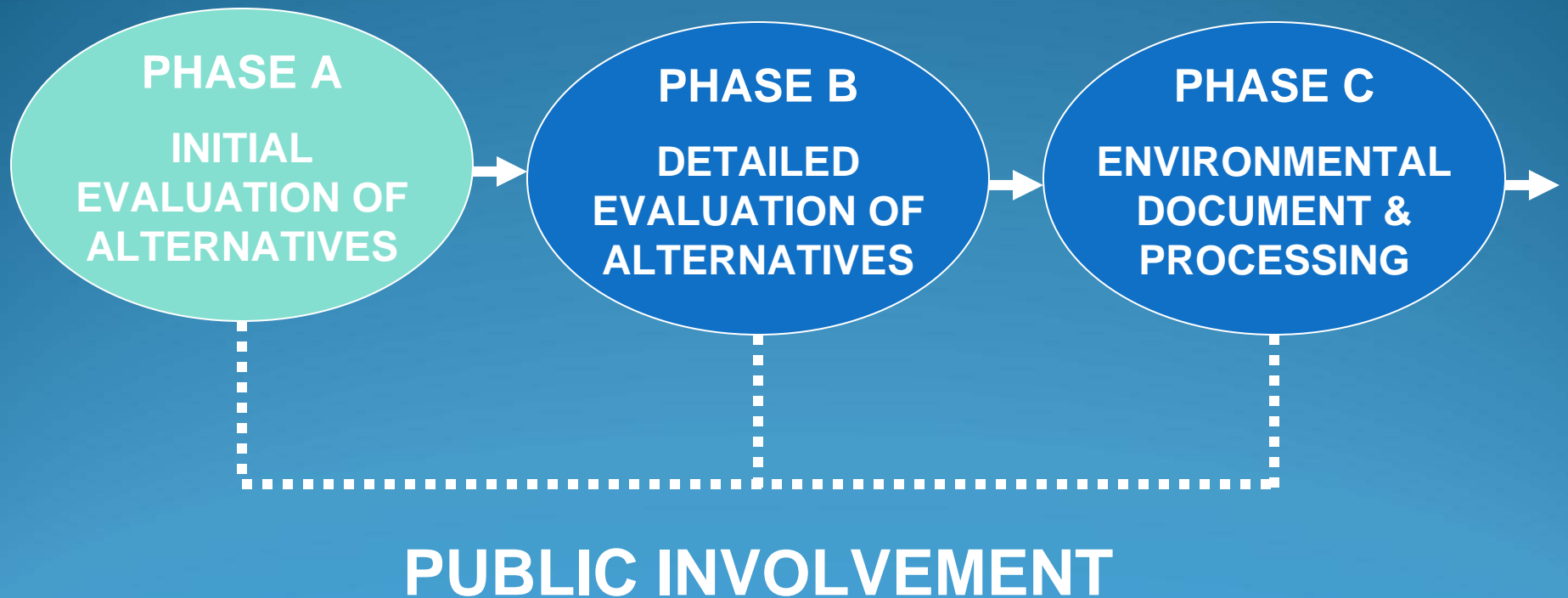
Table 20 – Matrix for Alternatives Evaluation

Interchange Location	Fig	Right-of-way required (acres) ¹	Construction Cost not incl. Right-of-way	Relocations Required	Improves Safety at existing intersections ²	Existing Intersection LOS = F	Removes traffic from adjacent intersections ³	Environmental Impact
No Build	n/a	0	\$0	0	n/a	No	n/a	None
I-25 Frontage Road Overpass	23	1.3 acres \$195,000	\$5,000,000	0	5	No	1	Low
Jaguar Rd								
Interchange at Jaguar	24	0	\$7,000,000	0	n/a	No	3	Low
NM 599 W. Frt Rd to I-25	25	7.4 acres \$1,110,000	\$4,000,000	0	n/a	No	3	Med
NM 599 E. Frt Rd to I-25	25	9.3 acres \$1,395,000	\$4,500,000	0	n/a	No	3	Med
NM 599 W. Frt to Airport	26	8 acres \$1,200,000	\$2,500,000	1	n/a	No	3	Med
NM 599 E. Frt to Airport	26	7.8 acres \$1,170,000	\$2,750,000	0	n/a	No	3	Med
Airport Rd	27	0	\$10,000,000	0	5	No	2	Low
Caja del Rio								
Extend Frontage Rd across Santa Fe River	28	1.5 acres \$225,000	\$4,000,000	0	n/a	No	3	Med
Interchange at Caja del Rio	29	33.5 acres \$5,025,000	\$7,000,000	0	n/a	No	5	Med
NM 599 S Frt Rd Caja to CR 62	30	6.5 acres \$975,000	\$6,200,000	0	n/a	No	1	Low

Table 20 – Matrix for Alternatives Evaluation

Interchange Location	Fig	Right-of-way required (acres) ¹	Construction Cost not incl. Right-of-way	Relocation Required	Improves Safety at existing intersections ²	Existing Intersection LOS = F	Removes traffic from adjacent intersections ³	Environmental Impact
CR 62	31	0	\$6,000,000	0	5	Yes	5	Low
CR 70 Connection	32	0	\$9,000,000	0	3	Yes	5	Low
Ephriam Rd								
Ephriam Rd Interchange	33	0	\$7,000,000	0	1	No	1	Med
Ephriam Rd Overpass	34	1.2 acres \$180,000	\$4,000,000	0	1	No	1	Med
N Frt Rd Ephriam to Camino de los Montoyas	35	.7 acres \$105,000	\$2,500,000	0	1	No	5	Med
Camino de los Montoyas								
Interchange 1/3 mile northeast	36	0	\$8,000,000	0	1	Yes	1	Med
Interchange in existing intersection location	37	3.3 acres \$495,000	\$8,000,000	5	1	Yes	1	Med
Overpass w/ Frt Rd to Ephriam	38	1.5 acres \$225,000	\$5,500,000	0	1	Yes	1	Med
Overpass w/ Interchange 1/3 mile northeast	39	.8 acres \$120,000	\$12,000,000	0	1	Yes	1	Med
N Frt Rd CR 85 to Ridgetop	40	13.2 acres \$1,980,000	\$2,500,000	0	1	Yes	3	Low
S Frt Rd CR 85 to Ridgetop	40	24.7 acres \$3,705,000	\$3,500,000	0	1	Yes	3	Med

CORRIDOR STUDY PROCESS

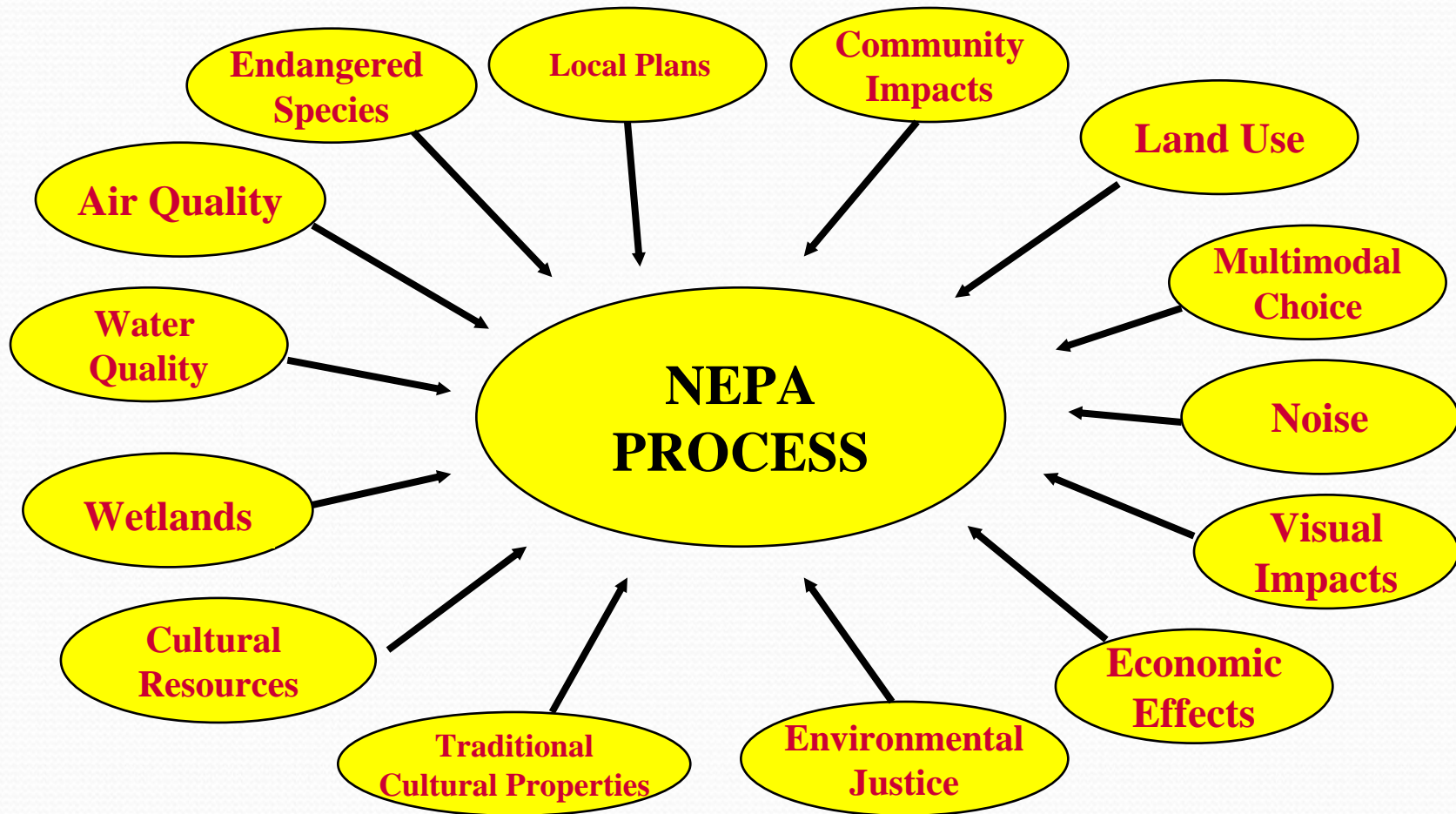




National Environmental Policy Act (NEPA)

- Applies to All Projects with Federal or State Funding
- Requires Systematic Analysis of Natural and Human Environment
- Part of the Design Decision-making Process
- Ensures Disclosure of Potential Impacts
- Provides Opportunities for Public Involvement

Environmental Analysis





Potential Environmental Impacts

- Surface Water
 - Floodplains
 - Wetlands
 - Arroyos
- Noise
 - May Require Further Study
- Air Quality
 - May Require Hot Spot Analysis for CO



Potential Environmental Impacts

- Vegetation and Wildlife
 - Gunnison Prairie Dog
 - Noxious Weeds
 - Migratory Birds
 - Threatened and Endangered Species
- Cultural Resources
 - State Historic Preservation Officer (SHPO)
- Section 4(F) Lands (*Santa Fe Open Space*)



Areas of little or no impact

- Environmental Justice
- Community Cohesion
- Ground Water
- Hazardous Materials
- Soils



Public Involvement

- 3 Public Meetings
- 1 Stakeholder Meeting
- Santa Fe TCC and TPB Meetings
- Mailing List of Over 600
- NMDOT District 5/Santa Fe MPO Websites



Input Encouraged!!

Denise Weston / Parametrix

8901 Adams Street NE

Albuquerque, NM 87113

Phone: (505) 821-4700 / (303) 514-3848

dweston@parametrix.com