



Santa Fe Metropolitan Planning Organization

"Promoting Interconnected Transportation Options"



MPO 101

Presentation

What is an MPO?



- Urbanized areas 50,000+ (Santa Fe MPO Est. 1982)
- Federally mandated
- Federally funded
- Responsible for regional transportation planning/coordination
- Match federal funding to projects of regional significance
- Ensure proper spending of federal highway funds

Core Characteristics

- to establish and manage a fair and impartial setting for effective regional decision making.
- to evaluate transportation alternatives, scaled to the size and complexity of the region.
- to develop and update a Long Range Transportation Plan covering at least a 20 year period that fosters:
 1. mobility and access for people and goods
 2. efficient system performance and preservation
 3. quality of life
- develop a TIP based on the Long Range Plan.
- to involve the public and all significantly affected subgroups

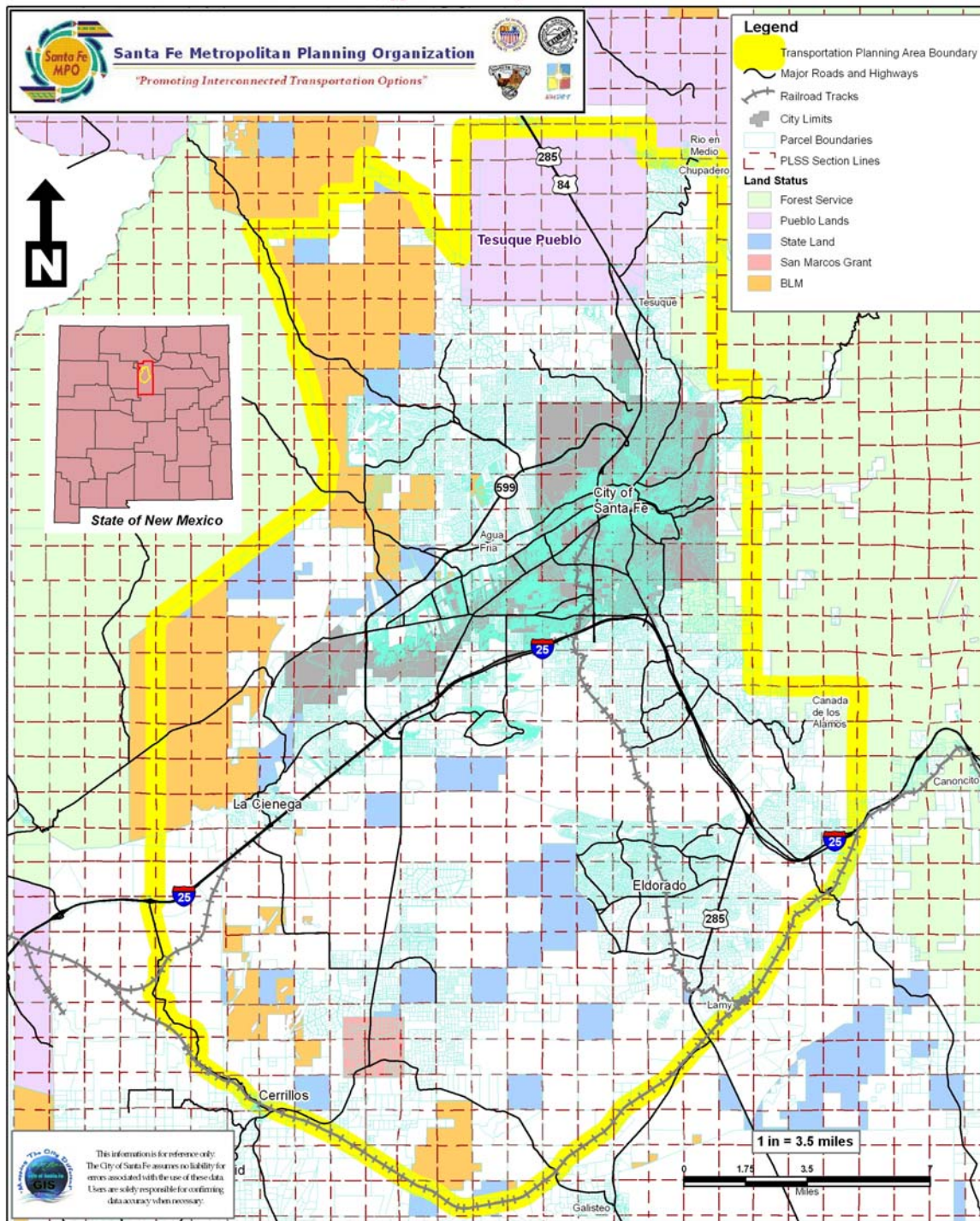


Santa Fe MPO

- Joint Powers Agreement between:
 - City of Santa Fe (Fiduciary)
 - Santa Fe County
 - Tesuque Pueblo
 - New Mexico DOT

Santa Fe Metropolitan Planning Organization Transportation Planning Area

(Approved February 12, 2009)





Key MPO Decision Makers

- Transportation Policy Body (TPB)
 - City of Santa Fe
 - Mayor and 2 City Councilors
 - Santa Fe County
 - 3 County Commissioners
 - Tesuque Pueblo
 - Governor or Designee
 - New Mexico DOT
 - Cabinet Secretary or Designee
 - Final decision maker for all MPO issues



Key MPO Decision Makers

- Technical Coordinating Committee (TCC)
 - 12 Member body with professional expertise in transportation
 - Provides the Transportation Policy Board with non-binding recommendations
- Staff

Cooperative Planning

- MPO's follow what is known as the "3C – Process":
 - Continuous
 - Cooperative
 - Comprehensive

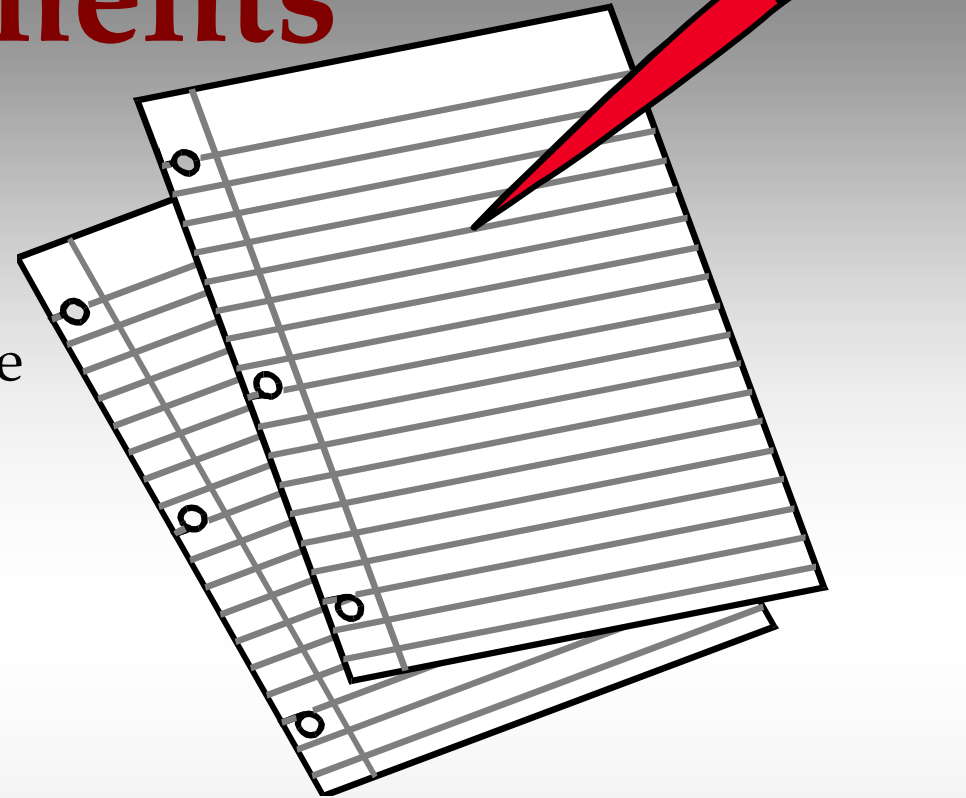


Eight Planning Factors

- Support economic vitality
- Increase safety
- Increase accessibility & mobility options
- Protect & enhance the environment and promote consistency with planned growth and economic development
- Enhance system integration and connectivity
- Promote efficient system management and operation
- Emphasize system preservation
- Increase Security

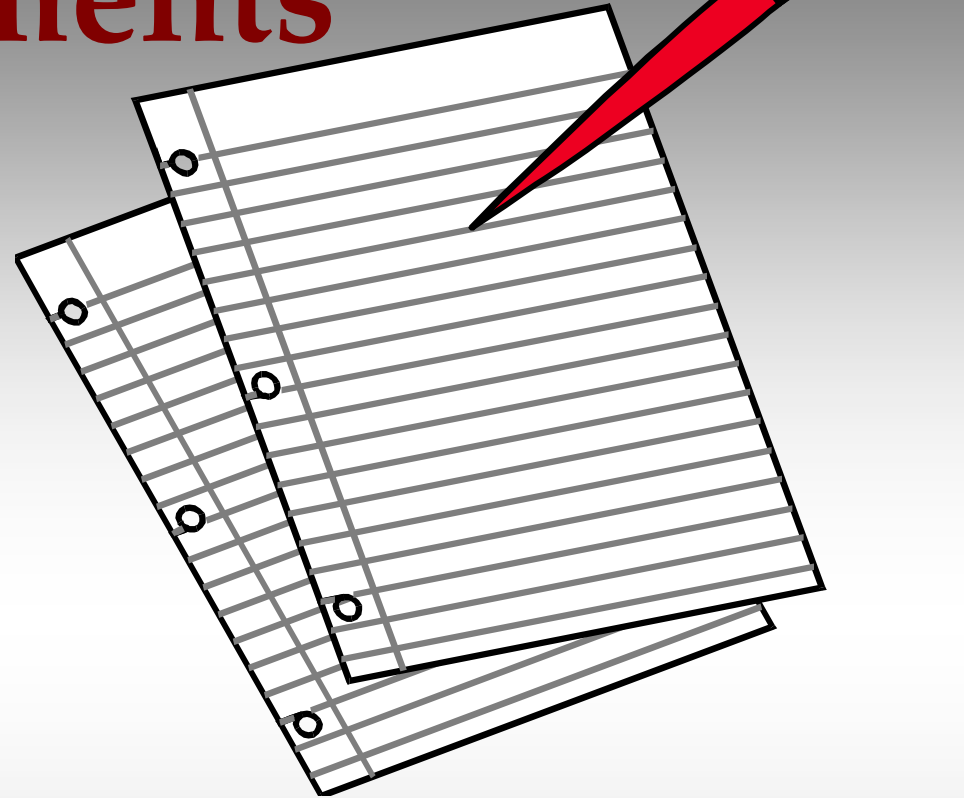
Required Documents

- **2035 Metropolitan Transportation Plan (MTP)**
 - Primary document for long range planning
- **Transportation Improvement Program (TIP)**
 - Specific projects to be completed over the next four years
- **Unified Planning Work Program (UPWP)**
 - Contains detailed descriptions of activities undertaken by SFMPO for the upcoming year



Required Documents

- Annual Listing of Obligated Projects
- Public Participation Plan



MTP

Metropolitan Transportation Plan

- Federal legislation mandates that MPOs have an MTP
- Must have a planning horizon of at least 20 years
- Plans for all modes of transportation within the region
- All projects funded with federal highway funds MUST be consistent with MTP
- Developed with extensive public involvement



TIP

Transportation Improvement Program

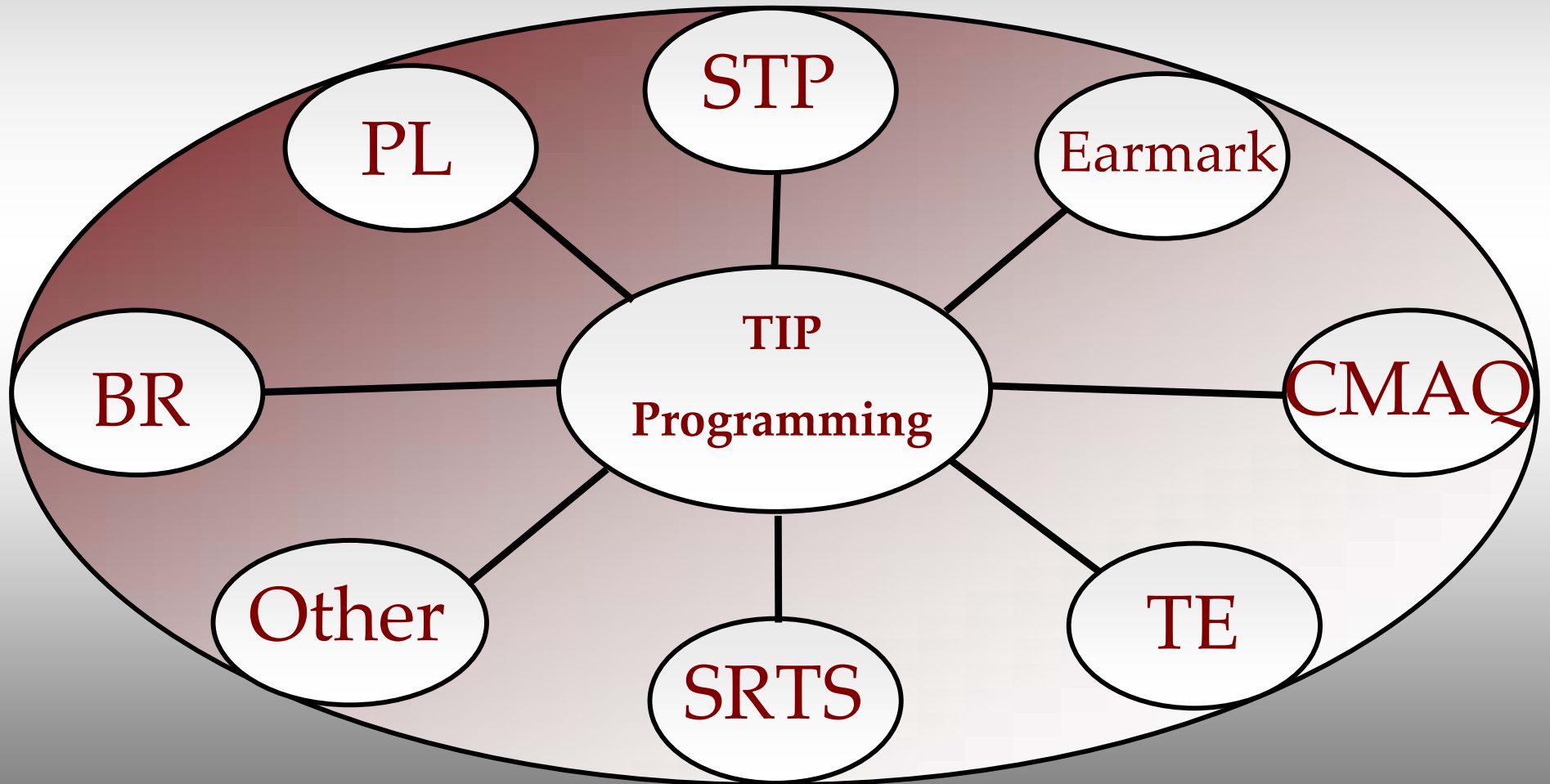
- Year-by-year line item list of projects approved for federal funding
- Approved projects must go through public involvement
- Projects recommended by TCC, final approval by Transportation Policy Body
- Includes all major funding categories plus additional earmarks and other programs
- Developed in compliance with forthcoming TIP policy



TIP roles & process – 23 CFR

- (§450.324) – In developing the TIP, the MPO, State(s), and public transportation operator(s) *shall cooperatively* develop estimates of funds that are reasonably expected to be available to support TIP implementation
- (§450.326) – After approval by the MPO and Governor, the TIP *shall* be included without change, directly or by reference, in the STIP
- Project selection from the TIP (§450.330)
 - Once a TIP has been approved, the first year of the TIP *shall* constitute an “agreed to” list for project selection, unless appropriated Federal funds are significantly less than the authorized amounts or where there is significant shifting of projects between years
 - In non-TMAs, projects using Title 23 USC funds or funds from Title 49 USC Chapter 53, *shall* be selected by the State and/or public transportation operator *in cooperation* with the MPO from the approved TIP

Major Funding Categories



UPWP

Unified Planning Work Program

- Listing of projects/work categories to be completed by MPO during fiscal year
- New UPWP approved each fiscal year
- Used to evaluate MPO performance
- MPO Staff provides quarterly progress reports to NMDOT and FHWA



What else does SFMPO work with?

?? ?

- Congestion Management
- Freight Planning
- ITS Architecture
- Safety & Security Planning
- Corridor Studies
- Railroad Crossings
- Non-motorized facilities & awareness
- Other Special Plans, Studies & Maps

?? ?

S F M P O

Santa Fe Metropolitan Planning Organization

Contacts:

Mark Tibbetts

MPO Director

mstibbetts@santafenm.gov

505-955-6614

Keith Wilson

MPO Senior Planner

kpwilson@santafenm.gov

505-955-6706