



# SANTA FE METROPOLITAN PLANNING ORGANIZATION

*Vámonos Santa Fe!*

Sept. 17, 2014

Volume 1, Issue 7

*"Transportation Planning for Pedestrians, Bicycles, Transit, Rail and Roads"*

*Representing you...*



*City of Santa Fe*



*Santa Fe County*



*Pueblo of Tesuque*



*NMDOT*



**JOIN US!**

**Sept  
25th**

**TRANSPORTATION POLICY  
BOARD 4:30PM**  
Market Station Offices

**Sept  
22nd**

**SFMPO TECHNICAL COOR-  
DINATING COMMITTEE**  
1:30 PM  
Market Station Offices

**Sept 20 & 24th**

Pedestrian Master Plan Public  
Input Meetings: See Pg 4



**YOU CAN NOW FOLLOW US ON  
TWITTER!**

**@SantaFeMPO**



## SURVEY SAYS...!

**Based on surveys returned in 2014,  
informing the update of the 2010 MTP  
and its master plans, we are including  
highlights of common themes and  
what's trending in this issue.**



### **PUBLIC INPUT SURVEYS TO DATE:**

- ♦ **2014 MTP On-line Survey 300 results. Survey still available to the public. Go to [www.santafemppo.org](http://www.santafemppo.org)**
- ♦ **2014 Bike-To-Work Week Santa Fe—Cinelli Bicycle Give Away Survey 240 results**
- ♦ **2014 Pedestrian Master Plan Survey 878 responses**
- ♦ **2014 Public Transit Survey**
  - A. Ridership Survey 640 results**
  - B. General Public Survey 100 results**

**With approximately 2158 responses to date. Survey's were provided in English and Spanish in accordance to our Title VI requirements.**



# Common Themes and Trends

*Public input surveys assist the Santa Fe MPO with aligning priorities, policies and ultimately the investment of projects with the public's input. Six reoccurring themes include:*



1. [Increase network capacity](#) for all modes:
  - ♦ Support better network connectivity Community College District
  - ♦ Commit to completing projects including the NE/SE connectors
  - ♦ Connect Rabbit Road with Richards Ave
  - ♦ Look critically at an Richards Ave interchange with I-25
  - ♦ Address better network connectivity and equitable approaches to investments within the South side of Santa Fe (Airport Rd Area).
2. [Balance modal investments](#): Though single passenger automobile use dominates, there is a desire to focus investments in a manner that *balances our levels of investment* to address: traffic congestion, roadway maintenance, road network connectivity, traffic safety, transit services, train services, bike lanes/shoulders, trails, and sidewalks.
3. [Expand frequency, evening and weekend](#) transit services.
4. [Improve the frequency and service options](#) for the Rail Runner.
5. [Education and enforcement across all modes](#) of transportation.  
Programs, policy initiatives and enforcement campaigns that raise awareness regarding transportation laws and enforcing what is on the books in a consistent manner.
6. [Improving sidewalks, better connectivity, safer passages](#) and more destinations within walking distance were the primary improvements that respondents agreed would entice them to walk more.



**What are people saying about...**

## **ROADWAYS, INTERSECTIONS AND BRIDGES**

**Survey Question: What is your top priority transportation improvement for the Santa Fe Metropolitan Area?**

The pending study for NE/SE Connectors has clearly elicited a heightened level of public engagement as our MTP survey is simply dominated with this issue. Examples of specific comments as written include:



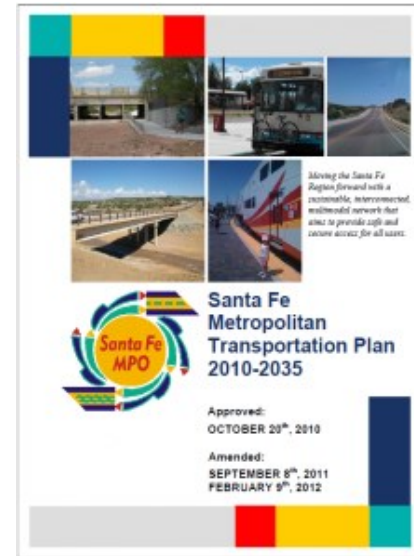
- *Rabbit Road Connection to Richards Ave*
- *Rabbit road to Richards connector, and speed bumps on Craftsman Rd. in Oshara village (At least 5 cars a day going 50+ miles an hour!). Another main roadway from Cerrillos to Rodeo near Richards Ave and freeway exit at Richards.*
- *Rabbit Road extension to Richards*
- *Connector roads from Rabbit Road to Richards Ave*
- *New Connector road to extend RABBIT ROAD to RICHARDS AVE and a new connector off of RABBITT RD to the SANTA FE COMMUNITY COLLEGE. This would stop OSHARA VILLAGE'S traffic nightmare for those of us living on Willow Back road and the entire village, especially the children. Thank you for your time!*
- *Completing the agreed-upon Northeast Connector from Rabbit Road to Richards Avenue.*
- *Richards Avenue to connect Rodeo Rd and Cerrillos Road.*

## **Additional comments about roadways include:**

- *We need more road network connectivity.*
- *The entrance ramp from north bound 599 to southbound 285/St. Francis (coming into town) is extremely short and dangerous. The southbound incoming traffic needs, at a minimum, signage that says "Through traffic, left hand lane" to make room for the on-coming 599 traffic. This dangerous intersection is compounded by blinding eastern sun during the morning rush. Also the speed limit should be reduced on HWY 285 BEFORE the 599 on- ramp. Southbound 285 traffic is generally traveling at least 60 mph here while the on-coming short 599 ramp is posted as 45 mph.*
- *Address the intersection of Zia and St. Francis*
- *Smoother, safer traffic flow - e.g. better stop light timing and intersection engineering throughout the city.*
- *congestion issues, and traffic light synchronization*
- *better traffic flow especially at rush hours*
- *St. Francis/Cerrillos intersection*
- *Please consider reopening discussion and planning for a 2 lane bridge across Arroyo Chamiso to connect Richards Ave. to Richards Ave.*

# Santa Fe MPO Releases Request for Qualifications (RFQ) for Metropolitan Transportation Plan Update.

With a large portion of public comments gathered, the MPO is seeking professional services to assist with the coordination of information and to help finalize the plan over the winter and spring. A "RFQ" will invite potential consultants to detail their qualifications and work with staff to outline approaches to successfully updating the plan.



Why is the MTP important?



Guess where this van is parked. Hint: It's Mr. Roger's Neighborhood.

***My freedom begins here.***

***Personal mobility,  
the freedom to  
move... to choose.***

- \* ***Access***
- \* ***Lifestyle***
- \* ***Independence***



Photo courtesy of Puppies1 @ deviantart

***What trip are you planning on taking?***

***Major life decisions are impacted by our transportation options. The Santa Fe MPO is listening! Please go to [www.santafempo.org](http://www.santafempo.org), take our survey and help us update the Metropolitan Transportation Plan to reflect your lifestyle.***

***Transportation Planning for Pedestrians, Bicycles,  
Transit, Rail and Roads***



**National Center for Safe Routes to School** Now accepting applications for \$1,000 mini-grants focused on helmet safety! The National Center for Safe Routes to School and Schwinn's Helmets on Heads Mini-Grant Program are looking for 25 great ideas from 25 schools across the country! Learn more and apply: <http://saferoutesinfo.org/about-us/newsroom/national-center-safe-routes-school-and-schwinn%E2%80%9999s-helmets-heads-mini-grants-program>



# Walking...

## The Santa Fe MPO is Wrapping up the Regions First Pedestrian Master Plan

And for good reason, as more and more communities are embracing the data and facts supporting the benefits of walking...

- There are lower pedestrian fatality rates and collision rates where more people are walking.
- More people tend to walk when a community plans for and has strong pedestrian advocacy
- People are definitively more healthy in states where more people walk.
- Few federal dollars go toward pedestrian facilities, but with advancements in dedicated planning efforts that detail benefits, design and performance measures, that is changing.
- Safety is statistically improved for all modes of travel when investments in pedestrian facilities increase.
- Combined benefits reduce financial burdens and increase the economic resiliency of communities..

Don't take our word for it go to the Alliance for Biking & Walking and check out the 2014 Benchmarking Report at [www.bikewalkalliance.org](http://www.bikewalkalliance.org).

National **Walk to School Day** is October 8. If you'd like to promote increased levels of daily activity for children, and thus healthier lifestyles, participating in the event is one way of doing that!

Here are some resources for promoting such an event at your school: 1) **Fire Up Your Feet** (a good first stop for info and support which also includes **instructional videos**). 2) CLIF Kid offers a **free kit** to support your school's efforts; and 3) Register your event at [walkbiketoschool.org](http://walkbiketoschool.org).



Santa Fe Metropolitan Planning Organization

"Promoting Interconnected Transportation Options"



## SANTA FE METROPOLITAN PEDESTRIAN MASTER PLAN

Please Join Us to Improve Santa Fe's Walkability

### PUBLIC INPUT MEETINGS

**Saturday, September 20** 10:30 am - 12:30 pm

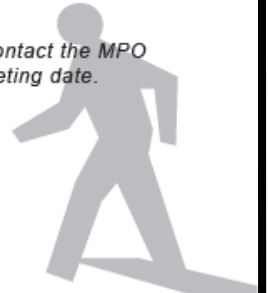
**Southside Library** 6599 Jaguar Dr

**Wednesday, September 24** 5:00 - 7:00 pm

**Gonzales Community School - Library** 851 West Alameda

Persons with disabilities in need of accommodations, contact the MPO office at 955-6625 five (5) working days prior to the meeting date.

information:  
design office 505.983.1415  
[santafemp@do-designoffice.com](mailto:santafemp@do-designoffice.com)  
[santafempo.org/pedestrian-master-plan/](http://santafempo.org/pedestrian-master-plan/)



---

## **Santa Fe MPO Policy Board Passes Resolution in Support of Amtrak's Southwest Chief**

---

### **A RESOLUTION ENDORSING EFFORTS TO MAINTAIN THE AMTRAK SOUTHWEST CHIEF PASSENGER SERVICE THROUGH RATON, LAS VEGAS AND LAMY, NEW MEXICO**



**WHEREAS**, the Santa Fe Metropolitan Planning Organization ('MPO') promotes a multi-modal, regional transportation system that is safe, energy and fiscally efficient, maximizes community connectivity, serves the mobility needs of all citizens, and exists in harmony with the environment; and

**WHEREAS**, in accordance with the 2010 Santa Fe Metropolitan Transportation Plan, the Santa Fe MPO "supports the economic vitality of the metropolitan area, especially by enable global competitiveness productivity and efficiency, and emphasizes the preservation of the existing transportation system"; and

**WHEREAS**, Amtrak's Southwest Chief serves northern New Mexico on its route between Chicago and Los Angeles on the host railroad line of Burlington Northern Santa Fe (BNSF); and

**WHEREAS**, The Southwest Chief is an indirect successor to the famed Santa Fe Super Chief, operate until Amtrak took over provision of the nation's passenger services in 1971. It had been the first Diesel-powered and all-Pullman (sleeping car) train in the U.S., and was that railroad's standard bearer, making its maiden run in 1936; and

**WHEREAS**, the Southwest Chief's Lamy station is located on the southern boundary of the MPO Planning Area and is about a 30 minute drive from downtown Santa Fe; and

**WHEREAS**, Amtrak's agreement with BNSF for use of the track expires in January of 2016; and

**WHEREAS**, the operation of long distance trains has been a core federal responsibility since 1971 and "long distance passenger rail is a vital and necessary part of our national transportation system and economy"; and

**WHEREAS**, Amtrak's findings indicate that ridership along long-distance routes has increased 20 percent since 1998, reaching its highest point in 20 years in fiscal year 2013; and

**WHEREAS**, On April 5<sup>th</sup>, 2014, United States Senator's Mark Udall, Tom Udall and Martin Heinrich together drafted a letter supporting the preservation of the existing Southwest Chief route to the Chairman and Ranking Member of the Subcommittee on Transportation, Housing and Urban Development; and

**WHEREAS**, On June 19<sup>th</sup>, 2014 the New Mexico Association of Counties passed a resolution supporting the continuance of the existing Southwest Chief route; and

**WHEREAS**, the members of the Santa Fe Metropolitan Planning Organization Transportation Policy Board are in alignment with the call for support of the preservation of the existing Southwest Chief route and desire to see all reasonable solutions exhausted.

**NOW, THEREFORE, BE IT RESOLVED** that the Santa Fe Metropolitan Planning Organization Transportation Policy Board supports the continuation of Amtrak's Southwest Chief along its current and historic route now and after January 2016;

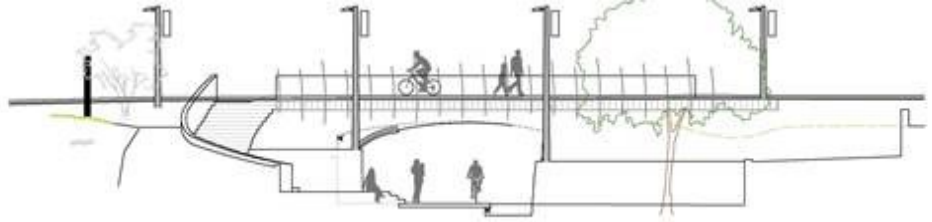
SANTA FE METROPOLITAN PLANNING ORGANIZATION POLICY BOARD



## Federal Funding and Trails...

**August 2014 was a good month for TRAILS with news about federal funding being allocated for two significant projects.**

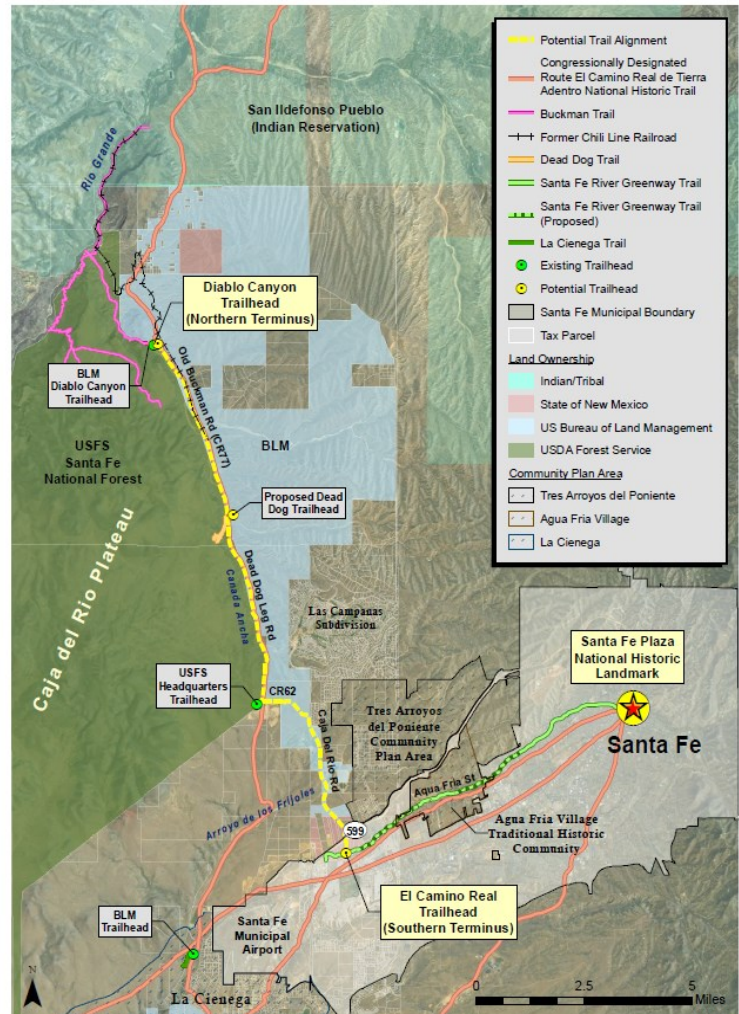
### ***Acequia Trail Underpass at St. Francis Drive just north of Cerillos***



On August 15th the City of Santa Fe was notified that they were the recipients of Federal Congestion Management and Air Quality Flexible Funds. The New Mexico Department of Transportation has approved the project for federal fiscal year 2015 in the requested amount of \$3,820,000. The funds have a 14.56% local match for which the City will be responsible. The design of the underpass is in progress. Construction is expected to begin summer/fall of 2015.

### ***El Camino Real/Buckman Retracement Trail: Caja Del Rio to Diablo Canyon***

Santa Fe County was pleased to find out in late August that they will be recipients of federal funding in the amount of \$3.8 million from the Federal Lands Access Program for the design and construction of a 13 mile long trail effectively following one of the original routes of Onate in 1601 on his way to establish the first Capital of New Mexico. Mountain bikers, hikers, bird watchers and trail runners will be happy to enjoy access to the backcountry including the Santa Fe National Forest and BLM without having to compete with vehicles along Buckman Road. The project will also provide paved access to Santa Fe's Municipal Recreation Center via a NM599 underpass. Funding supports trails detailed in the Santa Fe Metropolitan Bicycle Master Plan.





# COMMUTE

## SANTA FE

### A Bicycle Commuter Gathering

Friday, October 10th, 2014

5pm-8pm

MPO Railyard Offices, 500 Market St. (Above REI)



- ♦ For those who commute or want to commute via the bicycle.
- ♦ For those who would like to meet fellow commuters, share your stories & learn from others.
- ♦ For those who would like to know what projects are planned in the near and long term and opportunities to get involved.

Sponsored by the  
Santa Fe MPO



#### Metropolitan Bicycle Master Plan Goal:

*Santa Feans are able to confidently, safely, and effectively ride bicycles within a shared transportation network where cyclists' rights and responsibilities are understood, respected and enforced. (Pg. 82)*

### What's Your Story, Share Your Story...

**5:00 Open House:** Peruse maps, literature, master plans, funded future projects, share your route on a large formatted map, meet people in the business and provide input on future bicycle facility investments.

**6:00:** Introductions

**6:15: Key Note:** City Councilor Joseph M. Maestas— Why Bicycle Commuting Matters and Why Cities Should Care

**6:30: Share Your Commuting Story – Break Out Groups—Facilitated**

Event is FREE, but with limited space. Please RSVP to Erick Aune @ [ejayne@santafenm.gov](mailto:ejayne@santafenm.gov) or 505.955.6664 or go to [www.santafempo.org](http://www.santafempo.org)

Other Events: Check out the Oct. 10th evening G'low –N-Slow-Cruise:  
[www.ridgelineracing.org/glow-n-slow/](http://www.ridgelineracing.org/glow-n-slow/)





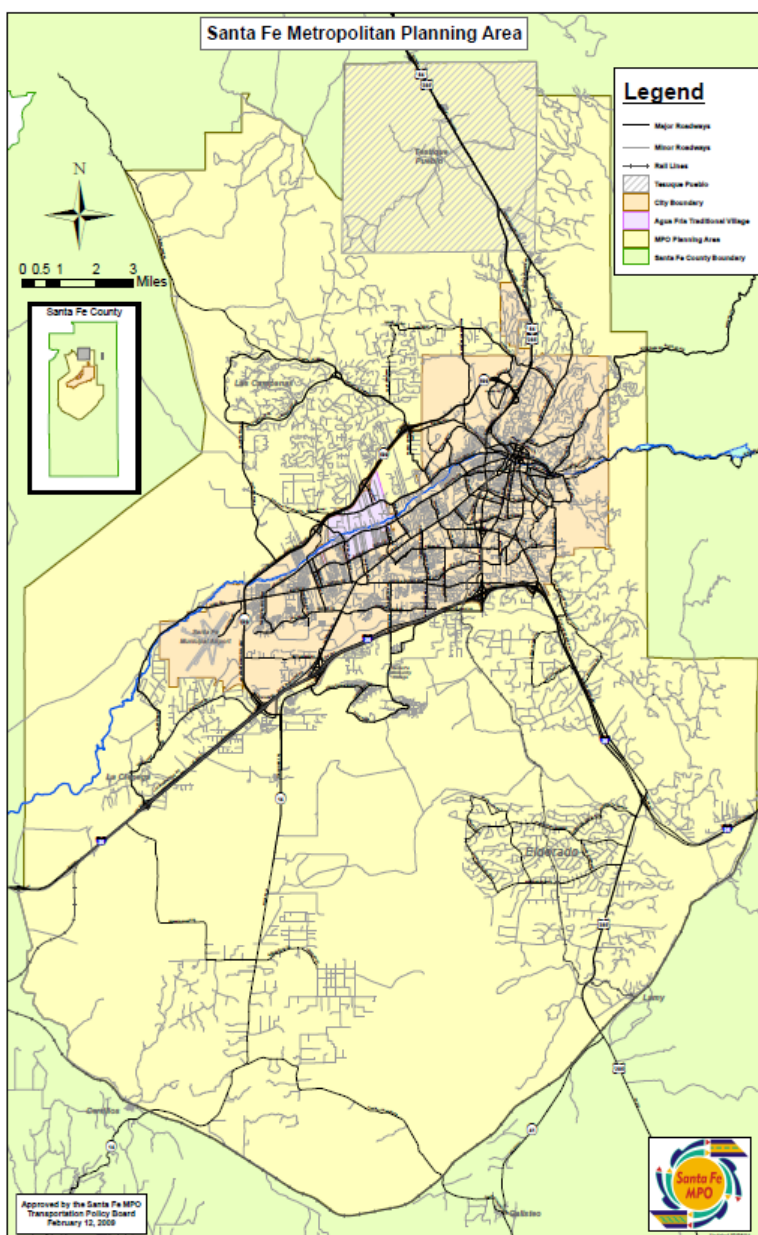
# About the Santa Fe MPO

## Transportation Policy Board Members

Commissioner Miguel Chavez – Santa Fe County – Chair  
Governor Robert Mora – Tesuque Pueblo – Vice-Chair  
Mayor Javier Gonzales – City of Santa Fe  
Councilor Patti Bushee - City of Santa Fe  
Councilor Carmichael Dominguez - City of Santa Fe  
Commissioner Robert Anaya - Santa Fe County  
Commissioner Liz Stefanics - Santa Fe County  
Tamara Haas - New Mexico DOT

## Alternate Members

Councilor Peter Ives  
-City of Santa Fe  
Commissioner Daniel Mayfield  
-Santa Fe County  
Sandra Maes  
-Tesuque Pueblo  
Michael Sandoval  
-NMDOT



## The SFMPO Planning Area Boundary

[MPO Planning Area Map](#) [1.4MB in Size]



**YOU CAN NOW FOLLOW  
US ON TWITTER!**

**@SantaFeMPO**



SFMP0—500 Market St.

P.O. Box 909

Santa Fe, NM 87504-0909

[www.santafempo.org](http://www.santafempo.org) 505.955.6625

Mark Tibbetts—[mstibbetts@santafenm.gov](mailto:mstibbetts@santafenm.gov)

Keith Wilson—[kwilson@santafenm.gov](mailto:kwilson@santafenm.gov)

Erick Aune—[ejaune@santafenm.gov](mailto:ejaune@santafenm.gov)