



SANTA FE METROPOLITAN PLANNING ORGANIZATION

Vámonos Santa Fe!

Sept. 18, 2015
Volume 2, Issue 3



City of Santa Fe



Santa Fe County



Pueblo of Tesuque



NMDOT

SAVE THE DATE

**COMING
UP**

The PUBLIC is ALWAYS
WELCOME!

**Oct.
29th**

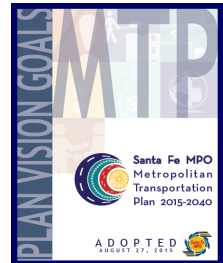
**TRANSPORATION
POLICY BOARD**
4:30 PM
Market station Offices

**Oct.
26th**

**TECHNICAL COORDI-
NATING COMMITTEE**
1:30 PM Market Station
Offices

INSIDE:

2015– 2040 MTP APPROVED



NCRTD—MOUNTAIN TRAIL ROUTE
INVITATION: GRAND OPENING



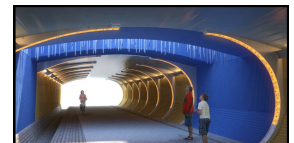
INVITATION: BIKE-SHARE
IN SANTA FE



GREEN LANE PILOT PROJECT
KICKS OFF



ACEQUILA TRAIL UNDERPASS
MOVES FORWARD



DOWNTOWN BIKE PARKING
STUDY

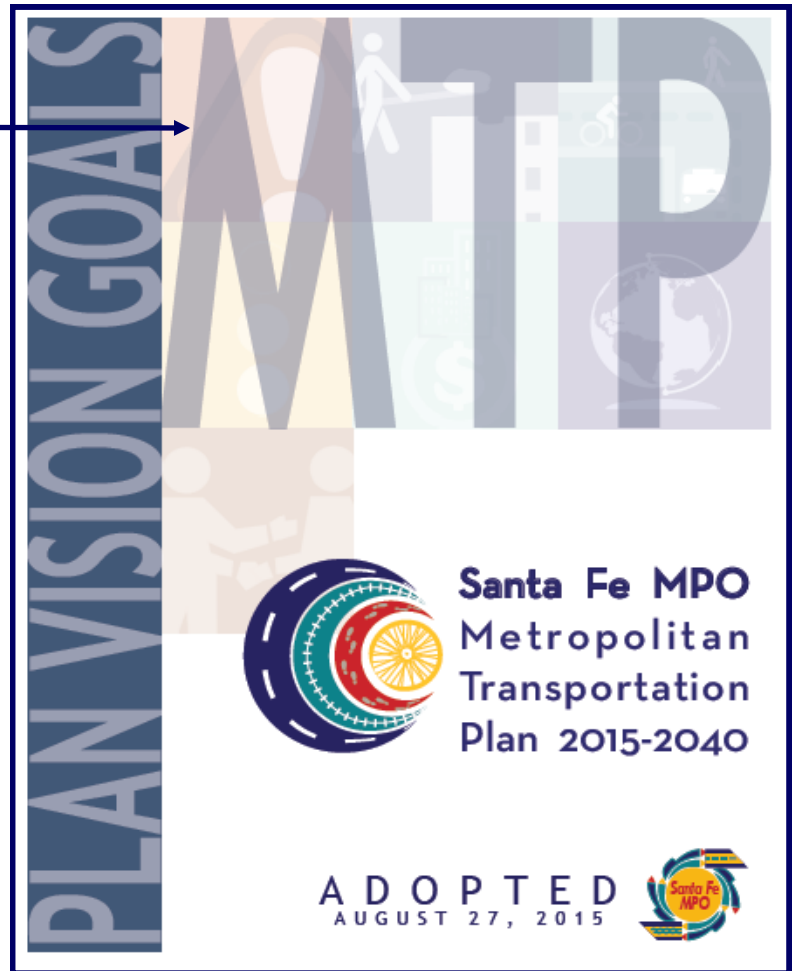


BIKE CORRAL SURVEY
RESULTS



Q: How would you spend \$232 million dollars worth of transportation infrastructure over the next 20 years?

A: _____



On behalf of the Santa Fe MPO, staff would like to extend it's gratitude to the Felsburg Holt and Ullevig (FH&U) team that assisted with the development of the now approved Santa Fe MPO Metropolitan Transportation Plan 2015-2040.

- ◇ Jenny Young, Project Manager;
- ◇ Cady Dawson-Transportation Planner;
- ◇ Megan Ornelas -GIS;
- ◇ Meghan Adams-Graphic Design;
- ◇ Linda Stuchlik-Technical Editor; and
- ◇ Holly Buck-Principal in Charge.

DOWNLOAD EXECUTIVE SUMMARY



Jenny led the team in a manner that was efficient, highly professional resulting in high quality work products. It was a pleasure working with them and we have a very cool MTP as a result. Staff thanks the Santa Fe MPO Technical Coordinating Committee and Policy Board for their review and approval of MTP.

The final plan may be downloaded at:

<http://santafemopo.org/mtp/metropolitan-transportation-plan-2015-2040/>

www.santafemopo.org

You're Invited!
Sept. 23rd



Please join the North Central Regional Transit District as they celebrate the launch of the RTD Mountain Trail Route which will provide service from the South Capitol Rail Runner Station through Downtown Santa Fe and to recreational areas and businesses along NM 475 concluding at Ski Santa Fe! The service will begin on Saturday, September 26th.



Wednesday, September 23

11:30 AM

South Capitol Rail Runner Station

(Directly across from the platform) Between Alta Vista St. and Cordova Rd. at

1301 Alta Vista St.

Santa Fe, NM 87505

www.santafempo.org

2 Pioneer Sponsors Wanted: Santa Fe BICI Bike Share

PIONEER SPONSORSHIP DETAILS:

**4 STATIONS ARE
REQUIRED TO
BEGIN A PRO-
GRAM IN SANTA
FE (There are com-
mitments for 2)**

**1 Station W/5
Bikes \$7500 a
year with a 2 Yr
Lease**

Program details
can be found at
[http://zagster.co
m/abq/](http://zagster.com/abq/)



Santa Fe's program will be a natural business expansion of Albuquerque's with the same terms and amenities and services.

What do I get for \$7500? 1 Station with 5 Zagster Bicycles and includes all operations and maintenance. The front of the bicycle will have a placard with your business or organization. The initial 4 stations sites are being planned downtown, but this model allows for tremendous flexibility in site location as the program grows. Albuquerque's successful pilot program is one great example.



Please contact Erick Aune
(ejaune@santafenm.gov) or
505.955.6664) with the Santa Fe
MPO for more information.



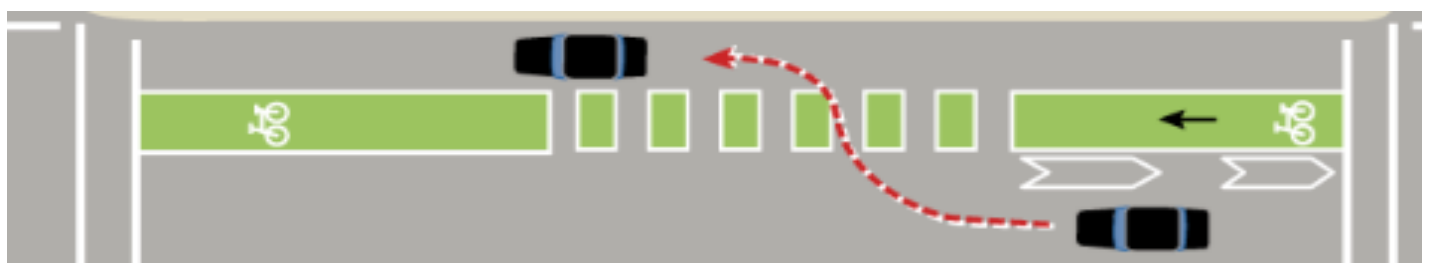
<http://zagster.com/blog/albuquerque-come/>



GREEN BIKE LANE MARKINGS SIGHTED IN NEW MEXICO

On August 25th travelers along Richard's Ave witness something strange along the roadside. The Green Bike Lane installation on Richards Ave is part of a Pilot project to evaluate the effectiveness of utilizing green pavement markings in Bike Lanes and also different materials. The other locations where green bike lanes will be marked are along Camino Carlos Rey from Cerrillos to Zia and Don Gaspar at Paseo de Peralta. You can see the exact locations by downloading a pdf file at the following link: <https://www.dropbox.com/s/d5rpxgzlnfqmpe8/GREEN%20BIKE%20LANES%204%2010%2015%20Pilot%20Locations.pdf?dl=0>

The Richards Ave installation utilized an epoxy resin with crushed colored glass for the markings. On Carlos Rey the markings will be a Pre-formed Thermo Plastic and Don Gaspar a colored asphalt product.



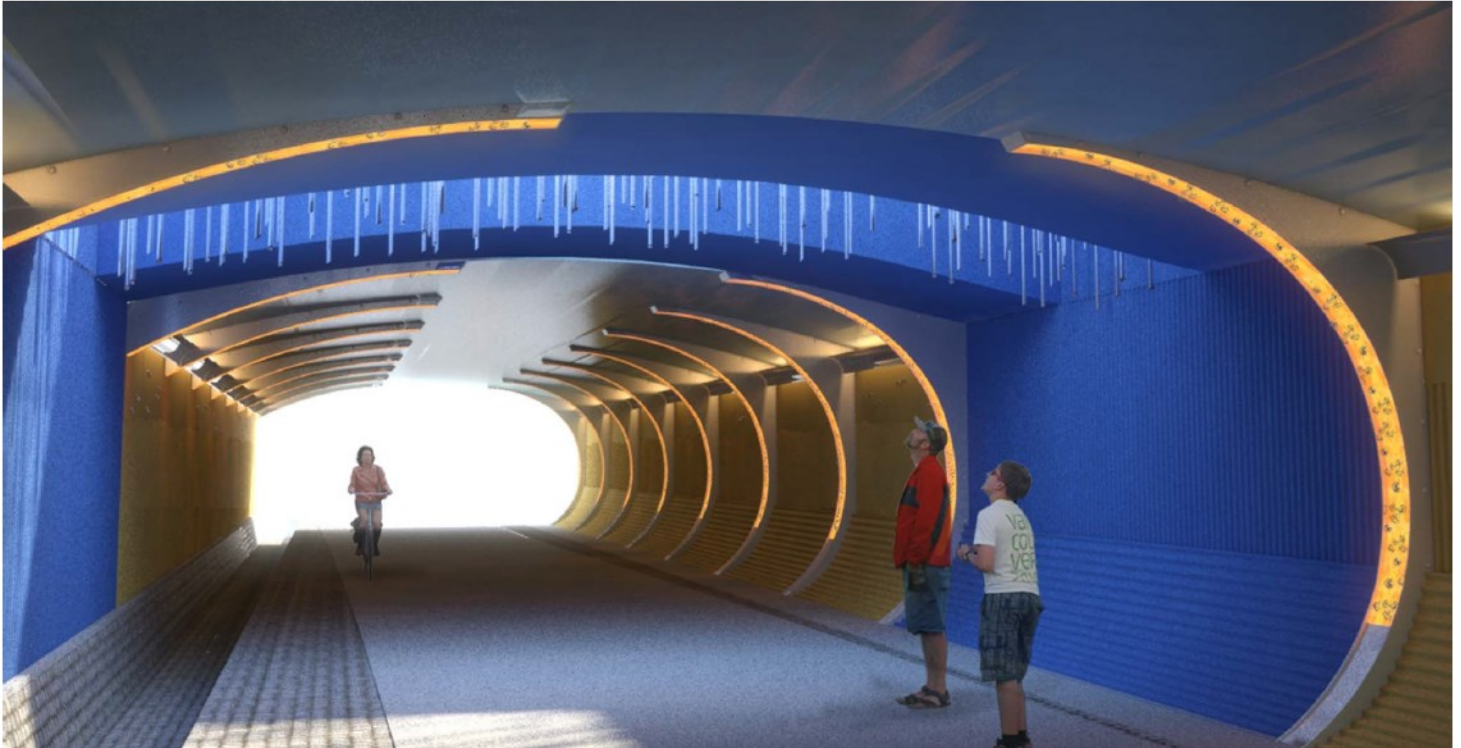
Camino Carlos Rey

City of Santa Fe's latest Green Bike Lane Markings being installed along Camino Carlos Rey between Cerrillos and Zia Roads on September 17th. Part of the pilot project to evaluate the use of green pavement markings in bicycle/vehicle conflict areas. This product is a preformed thermos plastic from Ennis/Fling. The final installation of the is pilot project will occur on the 18th on Don Gaspar at Paseo de Peralta and will use a Asphalt REsurfacer material from Performance Cement System.

Go out and take a look and ride through all the installations and let us know what you think!

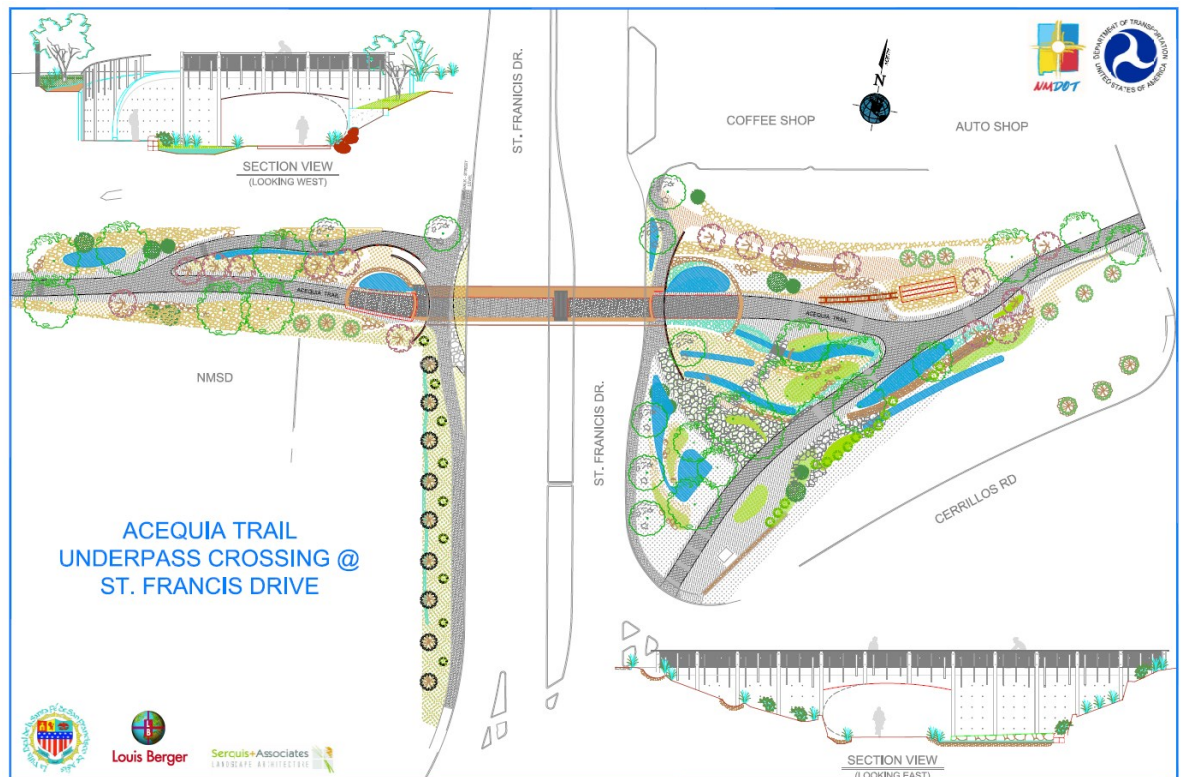


Acequia Trail Underpass Moving Forward



This underpass is a major next step in improving Santa Fe's bikeability. It will connect the Acequia trail adjacent to the New Mexico School for the Deaf to the Rail-yard Park just north of Cerrillos road, keeping cyclists out of the Cerrillos/St. Francis intersection and making a huge leap forward in the ease, safety and connectivity of bicycling in the City Different.

The \$3.82 million project, which is funded with 85.44% federal funds and a 14.56% city match is required. It is slated to bid for construction in fall 2015, and completion is anticipated in summer of 2016.

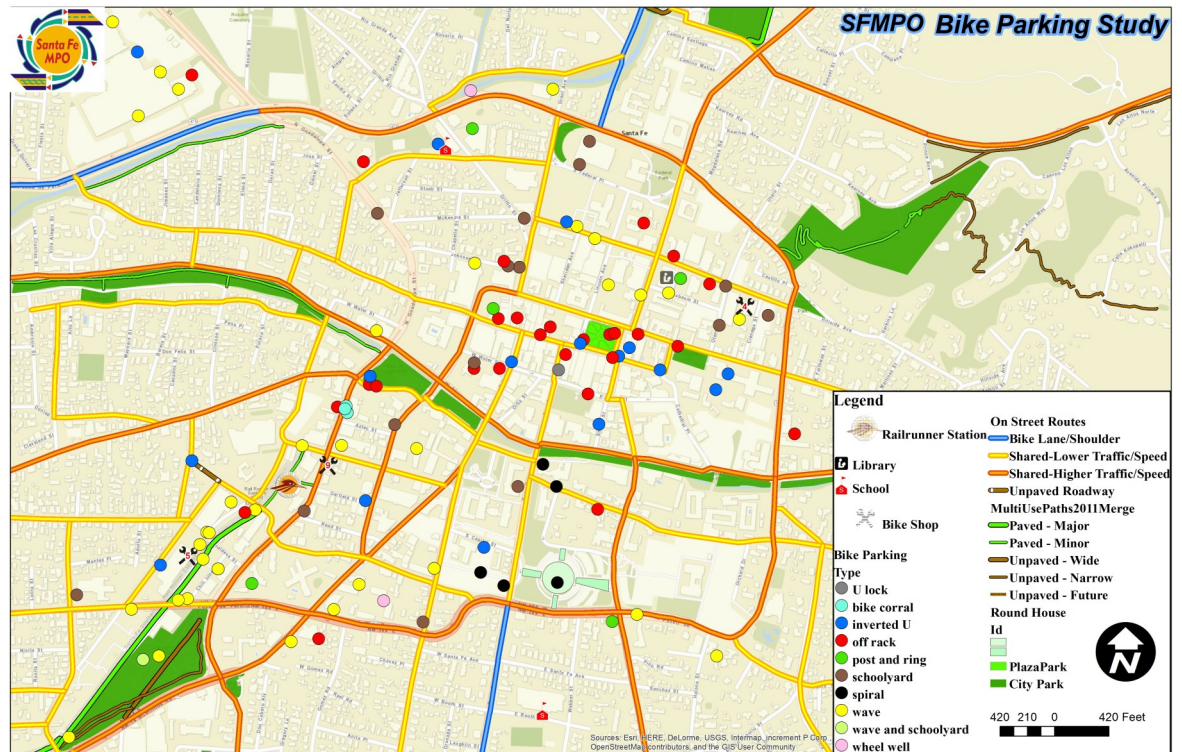


Downtown Santa Fe: Bicycle Parking Study

Nathan Todd, Santa Fe MPO Intern

Bike parking is an essential yet overlooked amenity that cities can provide to encourage cycling in their communities. It encourages active transportation and can bring order

to the sidewalk and streetscape. In 2011, Santa Fe received Silver-level recognition as a “Bicycle Friendly Community” from the League of American Bicyclists and has been reaching other milestones such as improving on street bike facilities and trails, and implementing the state’s first “bike corral” and green lanes. Biking in Santa Fe is on the upswing.



Following the path of studying and improving our amenities we decided to do a bike parking study of Downtown Santa Fe this summer and have paired this with a Bike Corral survey. Our intern Nathan Todd, a UNM graduate student, set out on foot and walked up and down every street in the downtown area (and alleys and parking lots) to map and categorize available bike parking on public and private property. This consisted of photographing and geotagging formalized bike parking and doing the same for bikes parked off-rack (trees, benches, poles etc).

The findings were that bike parking is overly abundant yet sometimes hard to find in certain locales, there are “bike parking deserts”, some perfectly fine bike parking and an abundance of rack types that are considered inadequate such as the wave, spiral, and schoolyard racks. The findings have been synthesized into a series of GIS maps and PowerPoint presentation.

Guadalupe Street Bike Corral: Survey Results

Nathan Todd, Santa Fe MPO Intern

To get feedback on the wildly successful “bike corral” in front of the Cowgirl BBQ we conducted a targeted survey to gather feedback from the local cycling community regarding the bike corral, bike parking, and the city’s biking facilities in general. The survey was conducted from July 22nd – August 22nd and was created to inform local leaders on this and other bike related projects.



The survey was made on surveymonkey.com and was distributed through email listserves, social media, word-of-mouth and some door-to-door outreach. In total there were 143 respondents and the feedback was overwhelmingly positive. Here are some highlights:

- 25.55% of respondents had used the “bike corral” at least once, 15.33% had used it more than 3 times and 35.04% had not used it but intended to.
- 68% of corral users approached the corral from the street.
- Most respondents said that it was very easy (50.72%) or easy (44.93%) to use the corral.
- 93.57% of respondents support the continuation of the corral and for the City to formalize a Bicycle Corral program.
- Most (57%) find it somewhat difficult to find bike parking in Santa Fe.
- Respondent’s” bike corral” location recommendations: downtown, La Fonda, 2nd Street Brewery, Railyards, The Tune-Up Café, Violet Crown and many more..
- Protected Bike Lanes, marked bike lanes, sharrows (shared lane markings) and secure bike lockers were very popular choices for bike facility investments.

The Santa Fe MPO will be monitoring the corral through Spring of 2016. A report including the findings from this survey will be provided to the City of Santa Fe and the City of Santa Fe Bicycle & Trails Advisory Committee.



Susana Martinez
Governor

Tom Church
Cabinet Secretary

September 10, 2015

Traffic Advisory
**I-25 / NM 14 (Cerrillos Road)
Diverging Diamond Interchange Night Closures
Re-Scheduled For
September 22-25 & Week of October 2**

Santa Fe—The New Mexico Department of Transportation (NMDOT) continues construction on the I-25/NM14 (Cerrillos Road) Diverging Diamond Interchange located south of Santa Fe. The contractor will begin placing concrete girders on the I-25 bridges over Cerrillos Road. NMDOT thanks you for your patience during this improvement project

The NM 14 (Cerrillos Road) night closures have been re-scheduled from September 14 to September 22 through September 25 and September 28 through October 2nd from 9:00 pm each night to 6:00 am the following morning.

During each nightly closure, the NM 14(Cerrillos Road) northbound and southbound lanes will be **CLOSED** at 9:00 p.m. from Beckner Road to Rancho Viejo. Southbound NM 14 (Cerrillos Road) traffic will be detoured to I-25 West Frontage Road to NM 599 to access Southbound NM 14 (Cerrillos Road). Northbound NM 14 (Cerrillos Road) traffic will be detoured to NM 599 to I-25 West Frontage Road to access Northbound NM 14 (Cerrillos Road). NM 14 (Cerrillos Road) will be **RE-OPENED** at 6:00 a.m. each morning.

The NM 14(Cerrillos Road) northbound on-ramp to northbound I-25 will be **CLOSED**. Traffic will be detoured to the NM 599 interchange to access I-25 northbound. The I-25 on-ramp will be **RE-OPENED** at 6:00 a.m. each morning

The NM 14 southbound on-ramp to I-25 southbound and the I-25 (Exit 278) off-ramps to NM 14 (Cerrillos Road) will remain **OPEN**.

Traffic Advisories and updates on this project will be posted on the New Mexico Department of Transportation's road conditions website, <http://nmroads.com/>. You can also call the NMDOT's road hotline at 511 or 1-800-432-4269.

###

For more information, contact Rosanne Rodriguez, NMDOT District Five Public Information Officer at 505-995-7704 or by email at rosanne.rodriguez@state.nm.us.

Transportation Policy Board Members

Councilor Carmichael Dominguez - City of Santa Fe -Chair

Commissioner Henry Roybal – Santa Fe County -V-Chair

Commissioner Liz Stefanics -Santa Fe County

Governor Robert Mora -Tesuque Pueblo

Councilor Patti Bushee - City of Santa Fe

Commissioner Robert Anaya - Santa Fe County

Tamara Haas - NMDOT

Mayor Javier Gonzales -City of Santa Fe

Alternate Members

Councilor Peter Ives

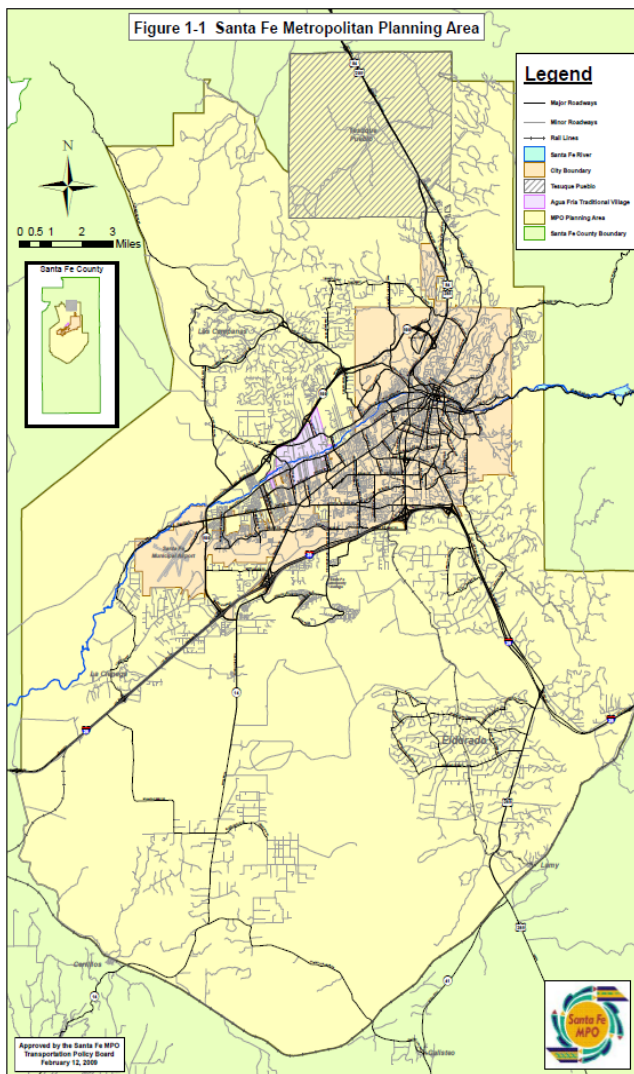
City of Santa Fe

Commissioner Miguel

Chavez Santa Fe County

Michael Sandoval

NMDOT



The SFMPO Planning Area Boundary

[MPO Planning Area Map](#) [1.4MB in Size]



Find Us on Facebook

The purpose of the MPO is to create a forum for transportation decision making in the metropolitan planning area. The Santa Fe MPO is responsible for:

- Facilitating cooperation, consistency, and connectivity between all transportation planning efforts within the Santa Fe metropolitan area
- Promoting a multi-modal, regional transportation system that is safe and energy/fiscally efficient
- Maximizing community connectivity
- Serving the mobility needs of all citizens
- Existing in harmony with the environment

For more information on the Santa Fe MPO see the following presentation: [MPO 101 Presentation](#)

SFMP0—500 Market St.

P.O. Box 909

Santa Fe, NM 87504-0909

www.santafempo.org 505.955.6625

Mark Tibbetts—mstibbetts@santafenm.gov

Keith Wilson—kpwilson@santafenm.gov

Erick Aune—ejaune@santafenm.gov

Nathan Todd—nwtodd@santafenm.gov

