



Public Information Meeting

***NM 599 / Via Veteranos
Intersection Safety Project***

Thursday, April 30, 2015

6:00 PM to 8:00 PM

Nancy Rodriguez Community Center

1 Prairie Dog Loop

Santa Fe, New Mexico



Meeting Agenda

- ❖ **Introductions**
- ❖ **NM 599 Background**
- ❖ **NM 599 Interchange Priority Plan (2010)**
- ❖ **NM 599/Via Veteranos Crash Data & Need for Interchange**
- ❖ **Recommendations of the MPO 2010-2035 Metropolitan Transportation Plan**
- ❖ **NM 599/Via Veteranos Interim Intersection Safety Improvement Options**
- ❖ **Comments and Questions**
- ❖ **Close**

Recognition/Introductions

- ❖ **Elected Officials**
- ❖ **Adam Miera, PE, NMDOT D5 Project Engineer**
- ❖ **Miguel Gabaldon, PE, D5 District Engineer**
- ❖ **David Quintana, PE, NMDOT D5 Tech Suppt Eng**
- ❖ **Chris Cudia, NMDOT D5 Environmental Analyst**
- ❖ **Keith Wilson, MPO Senior Planner**
- ❖ **Robert Martinez, PE, County Public Works**
- ❖ **Cassandra D'Antonio, SSW, Pub Inv Spec**

NM 599 - Background

NM 599:

- ❖ Veterans Memorial Highway/Santa Fe Relief Route or Bypass
- ❖ Situated entirely within the City of Santa Fe
- ❖ Begins at NM 14/Avenida del Sur Intersection
- ❖ Ends at US 84/285 Trumpet Interchange
- ❖ Approximately 14 miles long
- ❖ Speed limit varies 45 to 65 mph

NM 599 - Background

Beginning in the mid-1980s, the City of Santa Fe, NMDOT, and FHWA proposed a relief route for Santa Fe, which would serve the following purposes:

- ❖ Relieve congestion on major streets in Santa Fe, such as St. Francis Drive, Agua Fria Street, and Cerrillos Road;
- ❖ Provide a bypass for through traffic traveling around the city; and
- ❖ Provide a route for transporting hazardous waste from Los Alamos National Laboratory around Santa Fe.

NM 599 - Background

In 1984, the City undertook a location study to determine feasible alternatives for the relief route. An EA was initiated for the project in 1985 and completed in 1987, and a FONSI was issued by the FHWA in 1988, authorizing:

- ❖ Four-lane access-controlled roadway,
- ❖ Frontage roads, and
- ❖ Up to 13 access points that would be either at-grade intersections or grade separated interchanges.

NM 599 - Background

Because sufficient funding to complete the entire project was not available, construction of the Relief Route was divided into the following phases:

- ❖ **Phase I**: I-25 to the Santa Fe River crossing;
- ❖ **Phase II**: from the Santa Fe River crossing to the Buckman Road area; and
- ❖ **Phase III**: from the Buckman Road area to the junction with US 84/285.

NM 599 - Background

NM 599 was designed as a controlled access facility with interchanges at all access points. Currently,

- ❖ NM 599 is a limited access facility with 12 allowable access points.
- ❖ There are five interim at-grade intersections along the corridor where right-of-way has been preserved for future interchanges.
- ❖ Two additional access points at Jaguar Road and Caja del Rio have not been constructed.
- ❖ Jaguar Road Interchange is under construction and should be open this summer.

NM 599 Interchange Project Priority Plan

Purpose of the Plan:

- ❖ Changes in regional traffic demand and issues related to the alignments of the intersections of other roads with NM 599 necessitated the need for reanalysis of the corridor.
- ❖ Develop a prioritization plan for public funding that addresses access issues and supports economic development, regional transportation, and long range planning goals.

NM 599 Interchange Project Priority Plan

Findings of the Plan:

- ❖ NM 599 is used for local circulation in the area; however, the un-signalized intersections have Levels of Service (LOS) indicating long delays for cross street traffic during the peak hours.
- ❖ The NM 599 frontage roads are discontinuous along the corridor causing traffic to back track in order to reach their destinations.
- ❖ The local area roadway network is lacking in links between NM 599 and central Santa Fe which is a problem that will need to be addressed by local government.

NM 599 Interchange Project Priority Plan

Findings of the Plan:

- ❖ Capacity analysis of un-signalized intersections show that LOS F for cross streets occur during the peak hour.
- ❖ Improved access to cross NM 599 should be considered for local multimodal transportation on the north side of Santa Fe including vehicles, future transit, pedestrians and bicycles.

NM 599 Interchange Project Priority Plan

Plan Recommendation:

The preferred alternative for the Via Veteranos Intersection was to construct an interchange, which would

- ❖ Meet the purpose and need of eventually making NM 599 an access controlled facility,
- ❖ Improve safety at the existing intersection, and
- ❖ Improve the existing LOS.

NM 599 Interchange Project Priority Plan

| NM 599 Priority Projects for Public Funding | | |
|---|----------|---------------------|
| Location | Priority | Total Cost |
| CR 62 Interchange | 1 | \$6,500,000 |
| CR 70 (Via Veteranos) Interchange | 2 | \$8,000,000 |
| Airport Road Interchange | 3 | \$11,000,000 |
| I-25 Frontage Road Overpass | 4 | \$6,000,000 |
| NM 599 Frontage Road SF River Crossing | 5 | \$4,300,000 |
| Caja del Rio Interchange | 6 | \$12,650,000 |
| Ephriam Road Interchange | 6 | \$8,000,000 |
| Camino de los Montoya Interchange | 8 | \$11,050,000 |
| Jaguar Road Interchange | 8 | \$8,000,000 |
| NM 599 E. Frontage Road to I-25 | 10 | \$10,125,000 |
| Total Cost | | \$85,625,000 |

NM 599 / Via Veteranos Intersection Safety Project

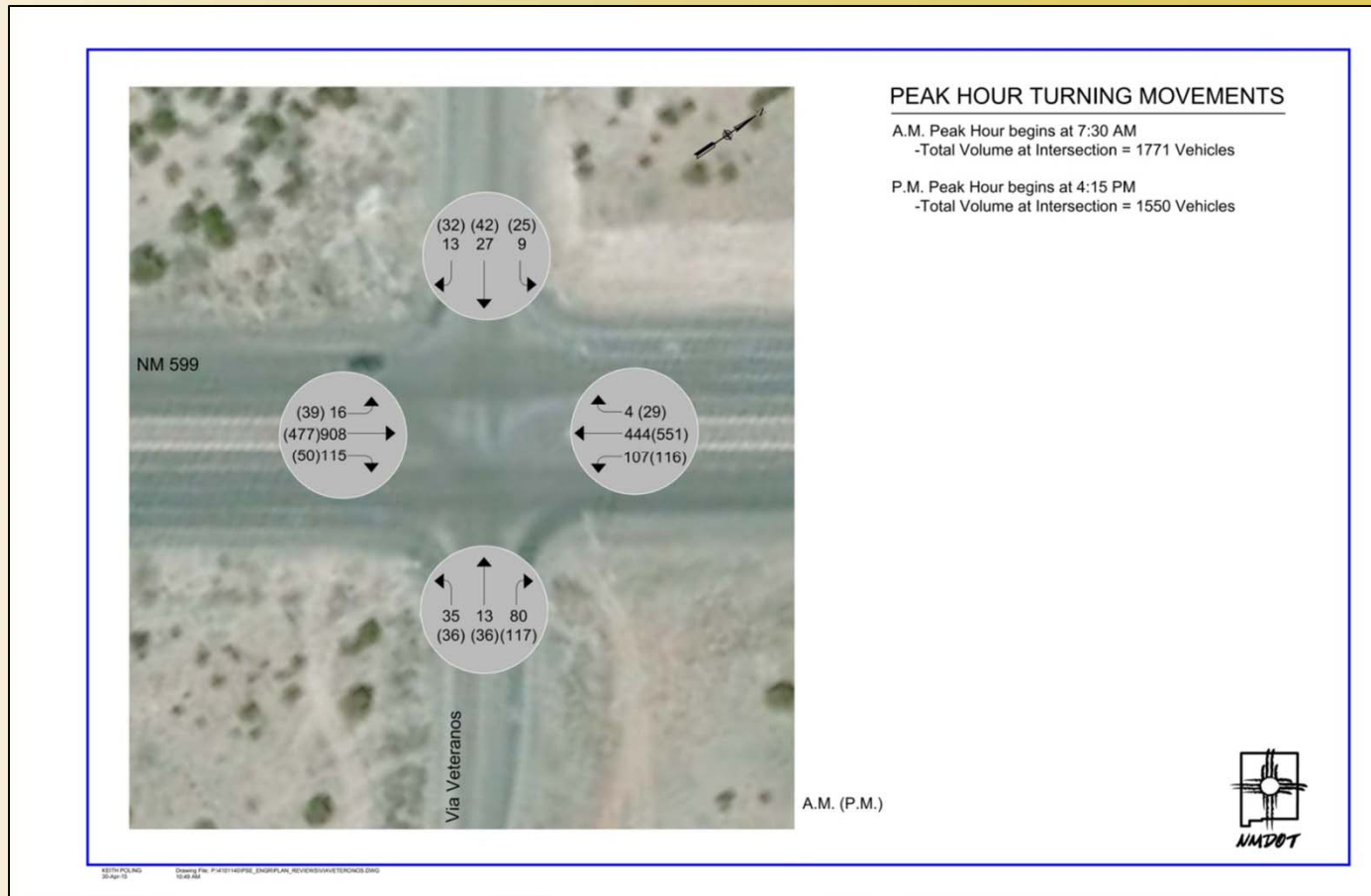


NM 599/Via Veteranos Crash Data

- ❖ The crash rates on NM 599 for the period from 2003 through 2007 were below the statewide average; however, the crashes have a high severity at the un-signalized intersections with most of the crashes having injuries.
- ❖ Fatal crashes within the five year period were all single car crashes mostly occurring at horizontal curves.
- ❖ The fatality rate in 2006 was much higher than the statewide rate because there were four fatalities in one crash.
- ❖ Peak hour volumes on NM 599 limit the number of gaps for crossing maneuvers at un-signalized intersections.

NM 599/Via Veteranos

Peak Hours Turning Movements



NM 599/Via Veteranos

Reported Intersection Crash History



REPORTED INTERSECTION CRASH HISTORY

Intersection of NM 599/CR70 at MP 8.3

▲ 2011 - 1 injury involving left turn onto NM 599
(NMDOT)

▲ 2014 - 1 accident resulting in a fatality
(SFCSSO)

TOTAL CRASHES

Between MP 8.0 and MP 9.0

| Year | # of Accidents | Severity |
|------|-------------------|---------------|
| 2011 | 3 | PDO: 0 |
| | | Injuries: 3 |
| | | Fatalities: 0 |
| 2012 | 2 | PDO: 1 |
| | | Injuries: 1 |
| | | Fatalities: 0 |
| 2013 | 1 | PDO: 0 |
| | | Injuries: 1 |
| | | Fatalities: 0 |
| 2014 | 2 | PDO: 1 |
| | | Injuries: 0 |
| | | Fatalities: 1 |
| 2015 | 1 | PDO: 1 |
| | | Injuries: 0 |
| | | Fatalities: 0 |

PDO = Property Damage Only

2011-2013 information provided by NMDOT
2014-2015 information provided by SFCSSO



Recommendations of the MPO 2010 Metropolitan Transportation Plan

- ❖ No new at-grade intersections shall be added to NM 599.
- ❖ All existing at-grade intersections will be converted to interchanges as funding becomes available.
- ❖ Identified the NM 599/Via Veteranos Interchange as a Short/Medium Priority in the 2021-2025 timeframe in the *Fiscally Constrained Plan*.

NM 599 Interchange Project Priority Plan

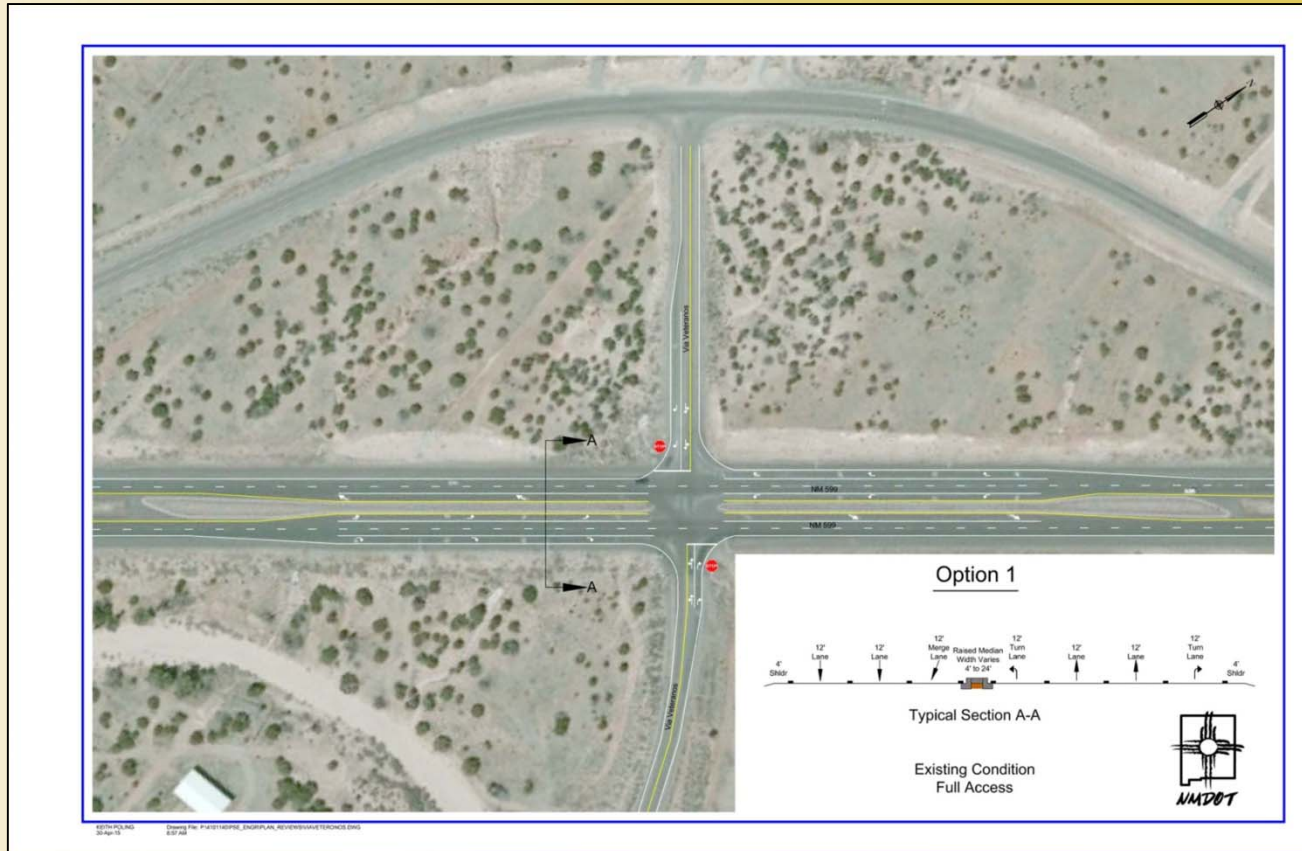


NM 599 / Via Veteranos Intersection Safety Project



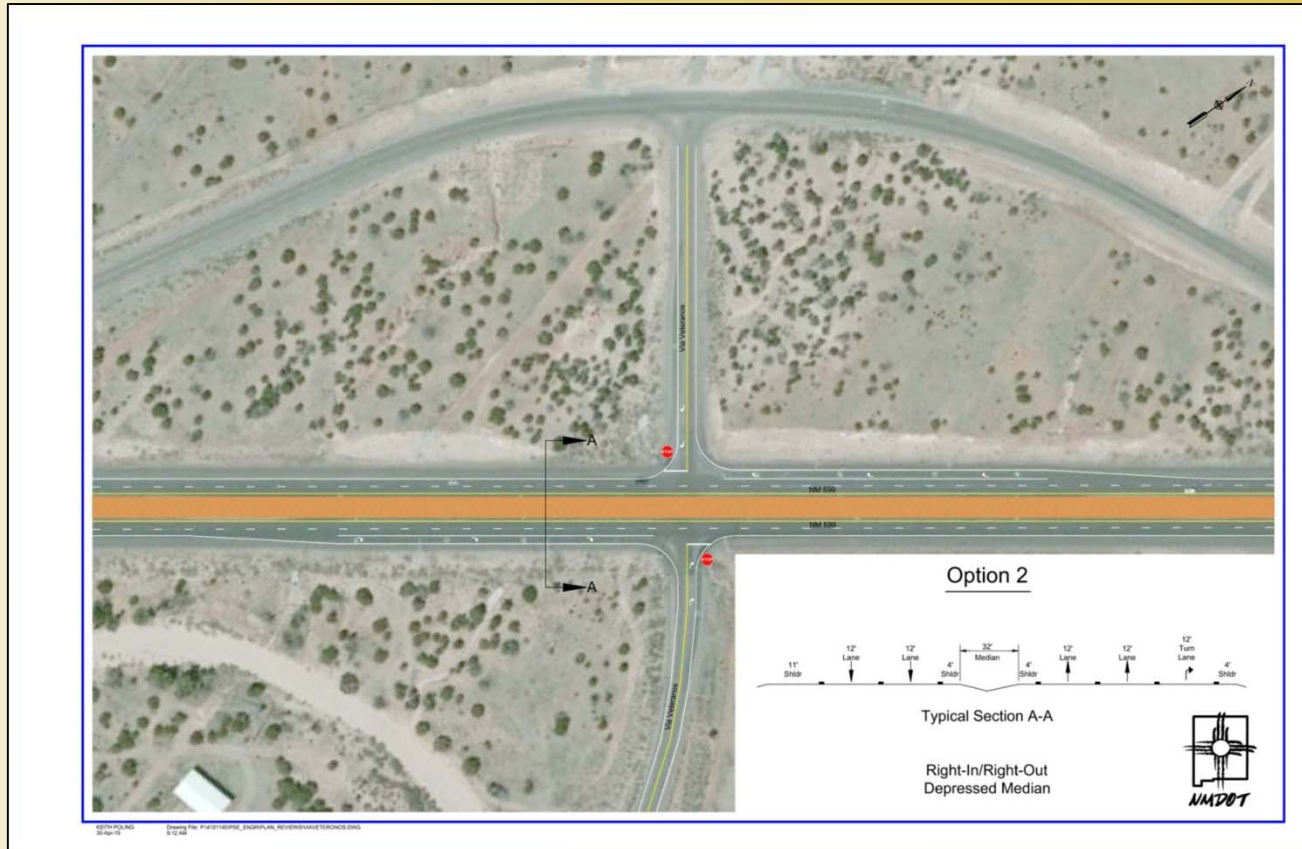
NM 599/Via Veteranos

Interim Safety Improvement Options



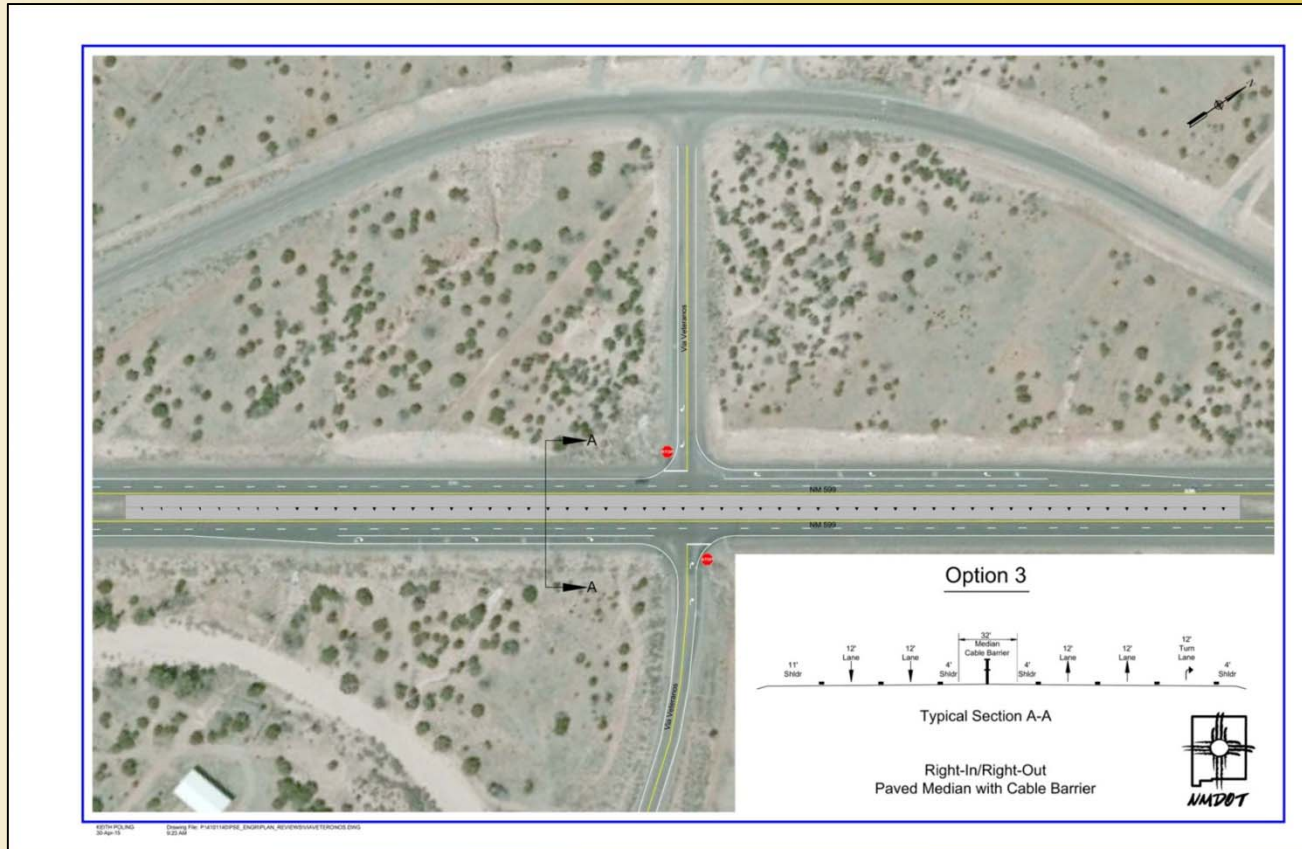
NM 599/Via Veteranos

Interim Safety Improvement Options



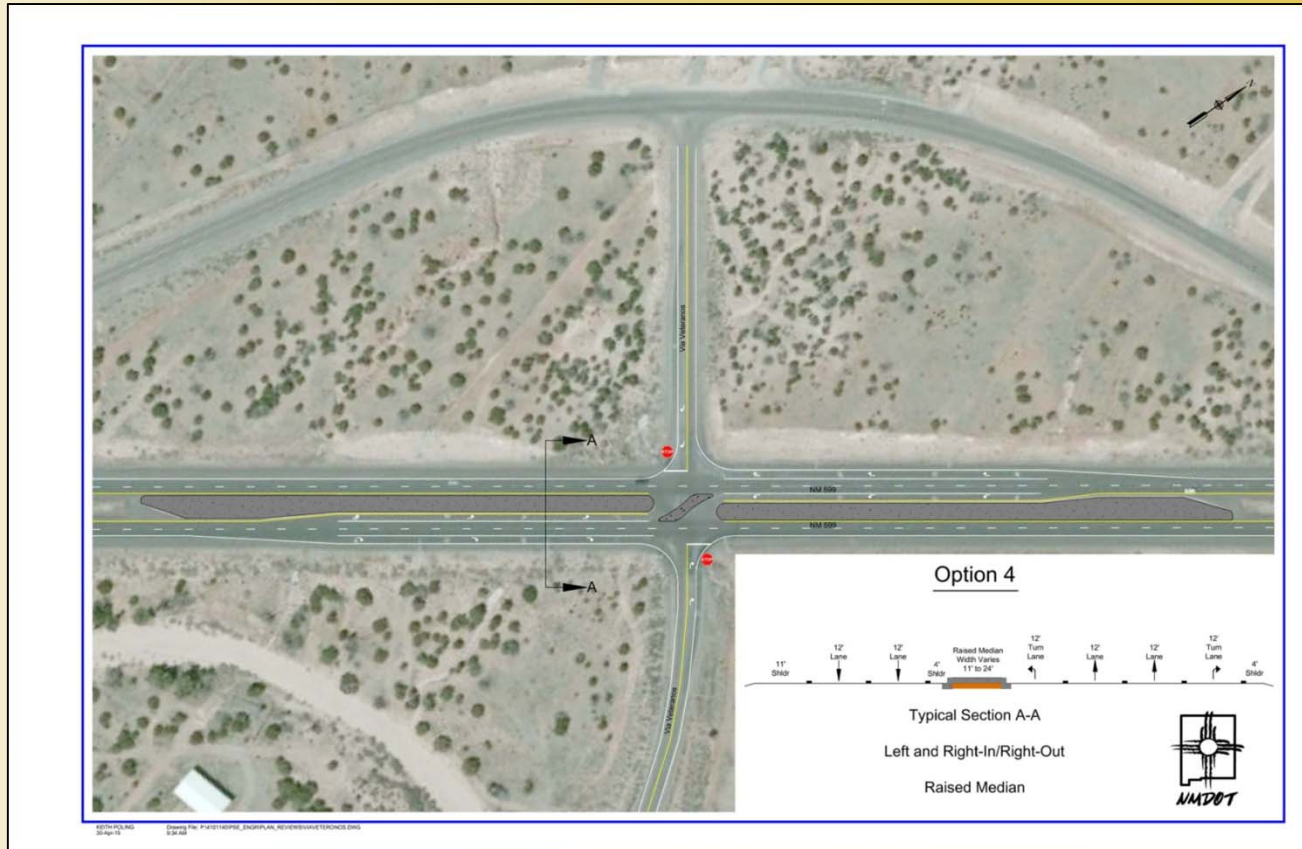
NM 599/Via Veteranos

Interim Safety Improvement Options

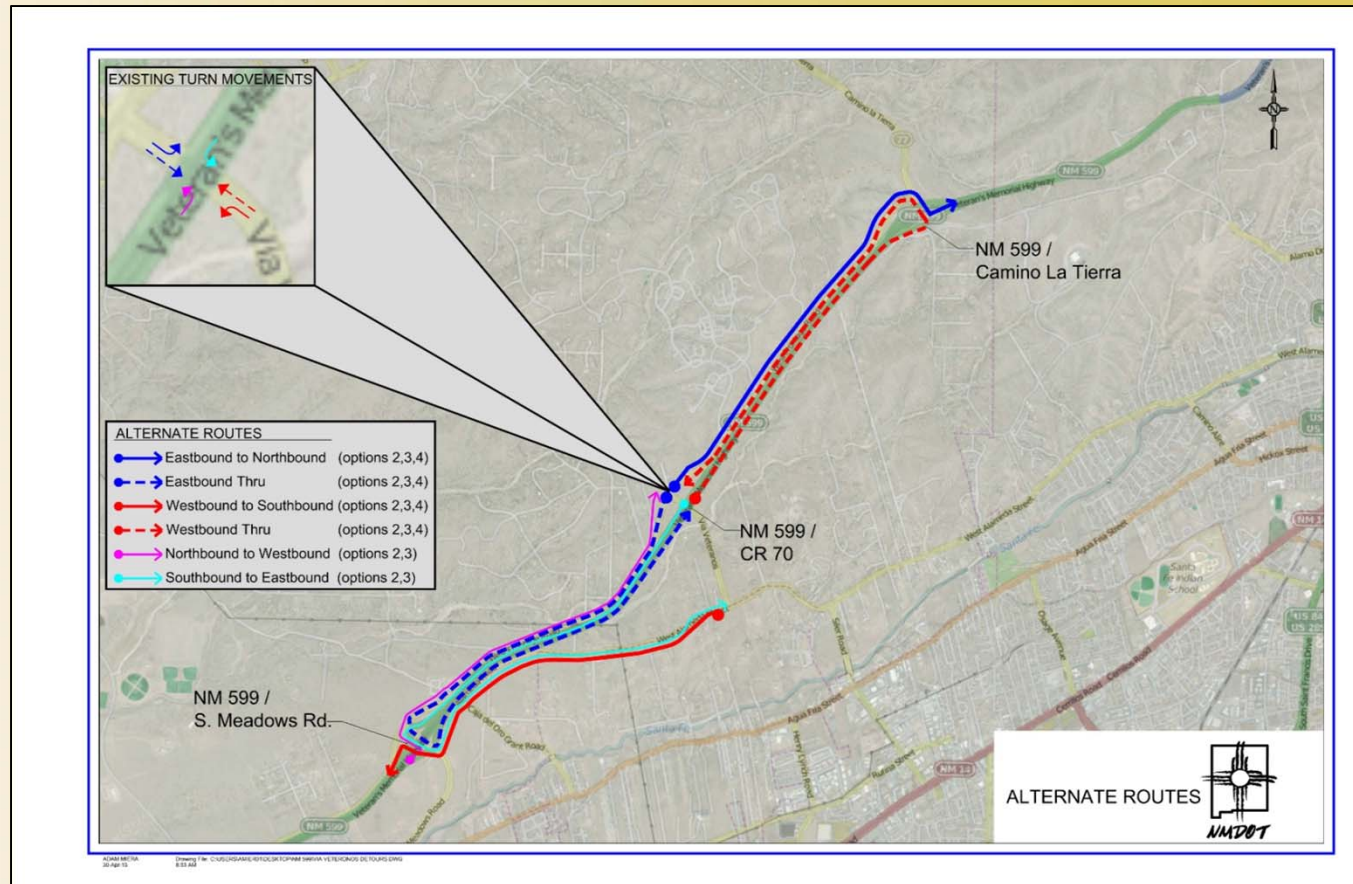


NM 599/Via Veteranos

Interim Safety Improvement Options



NM 599/Via Veteranos Alternate Routes



NM 599 / Via Veteranos Intersection Safety Project



Contact Information

Tonight's PowerPoint Presentation will be available for review for comment on the Santa Fe Metropolitan Planning Organization's website: www.santafemppo.org

Please provide comments by May 15, 2015:

- ❖ **Dropping card off in comment box after meeting**
- ❖ **Mailing Comment Card to address provided on back**
- ❖ **E-mailing comments to cdantonio@sites-sw.com**
- ❖ **Phoning comments to Cassandra D'Antonio, Sites Southwest, at 505.822.8200**

COMMENTS, CONCERNS, QUESTIONS?

**THANK YOU FOR YOUR
PARTICIPATION!!!**