

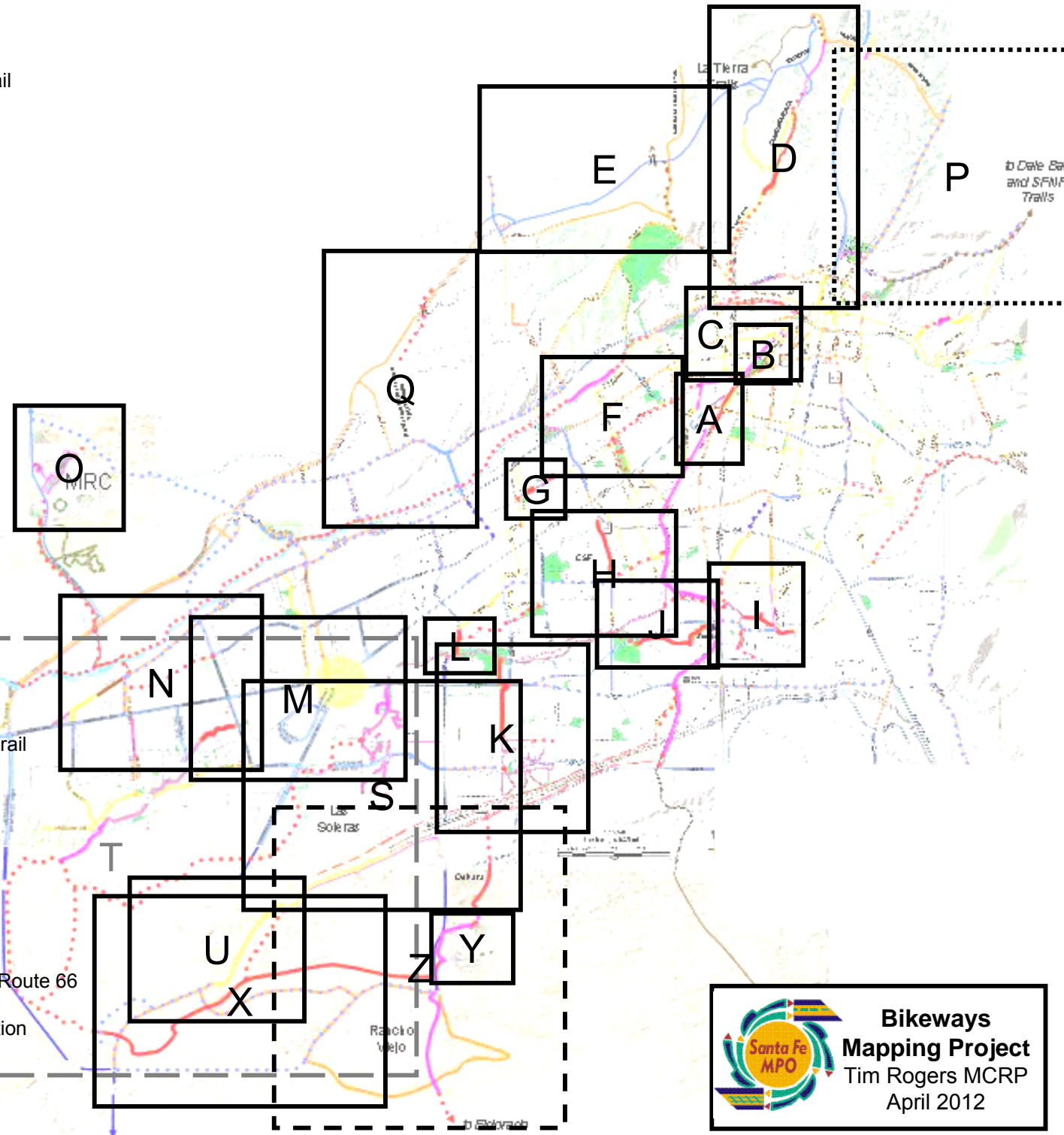
# Santa Fe MPO Bikeway Mapping Project

Revised  
Metropolitan Area  
Inset Maps

Tim Rogers MCRP  
April 2012



- A:** Acequia and Rail Trail Connections
- B:** Railyard Park Connections
- C:** River Trail Connections to Acequia Trail and Rail Trail
- D:** “North Spine” Trail / Bikeway
- E:** To La Tierra via NM599 Underpass
- F:** Acequia Bikeway & Ashbaugh Park Connections
- G:** Acequia Trail from Otowi Rd. to Harrison St.
- H:** CSF, Rail Spurs & Arroyo de los Pinos
- I:** SE Connections
- J:** Chaparral Trail with Ragel Park
- K:** NM Central / Kennedy Line: Arroyo Chamiso to I-25
- L:** Richards to Richards via Arroyo Chamiso Trail
- M:** Connections in from Tierra Contenta Trail
- N:** SW Bikeway Connections
- O:** MRC Connections
- P:** Cañada Ancha and Hyde Park Rd.
- Q:** N. Arroyo de las Trampas Trail & Bikeway to River Trail
- R:** Arroyo Verde Trail & Bikeway
- S:** Las Soleras and Richards Ave
- T:** Pavilion Area
- U:** I-25 / NM14 Interchange
- V:** I-25 / Cañoncito with Old Las Vegas Highway / Bike Route 66
- X:** Connections from Rancho Viejo to NM599 Train Station
- Y:** Trail Connections into Santa Fe Community College
- Z:** NM Central / Kennedy Line: County Segments





# Map A: Acequia and Rail Trail Connections around S. Capitol Station and Railyard Park

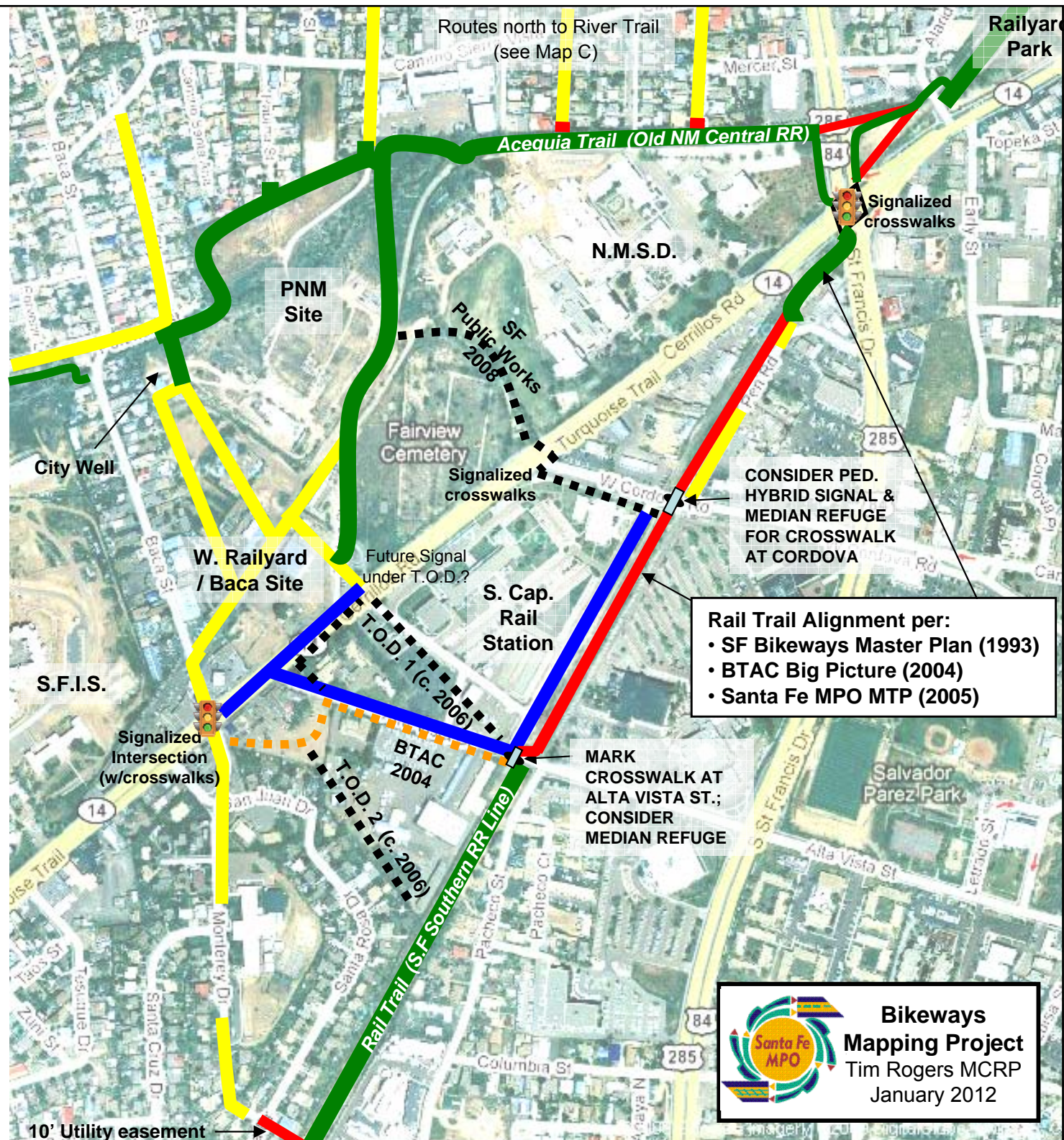
## KEY

### Trail Segments

- █ Existing
- █ Proposed: Priority 1
- - - - - Past Proposed
- - - - - Alternatives (with references)

### Road Segments

- █ Shared Lane
- █ Bike Lane / Paved Shoulder





## Map B: Railyard Park Connections

## Existing and proposed On-road and Off-Road Connections

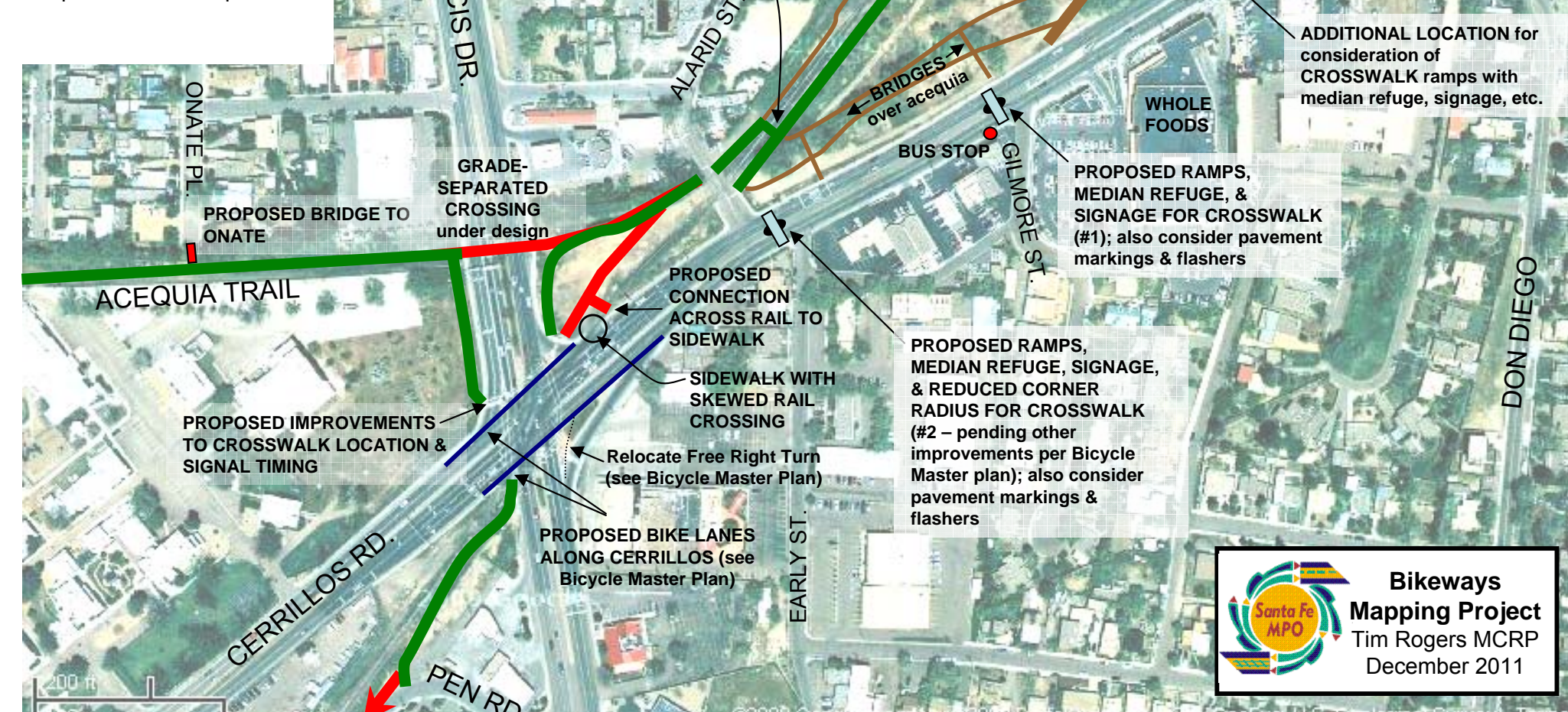
## Key

Existing multi-use path

Existing soft-surface path

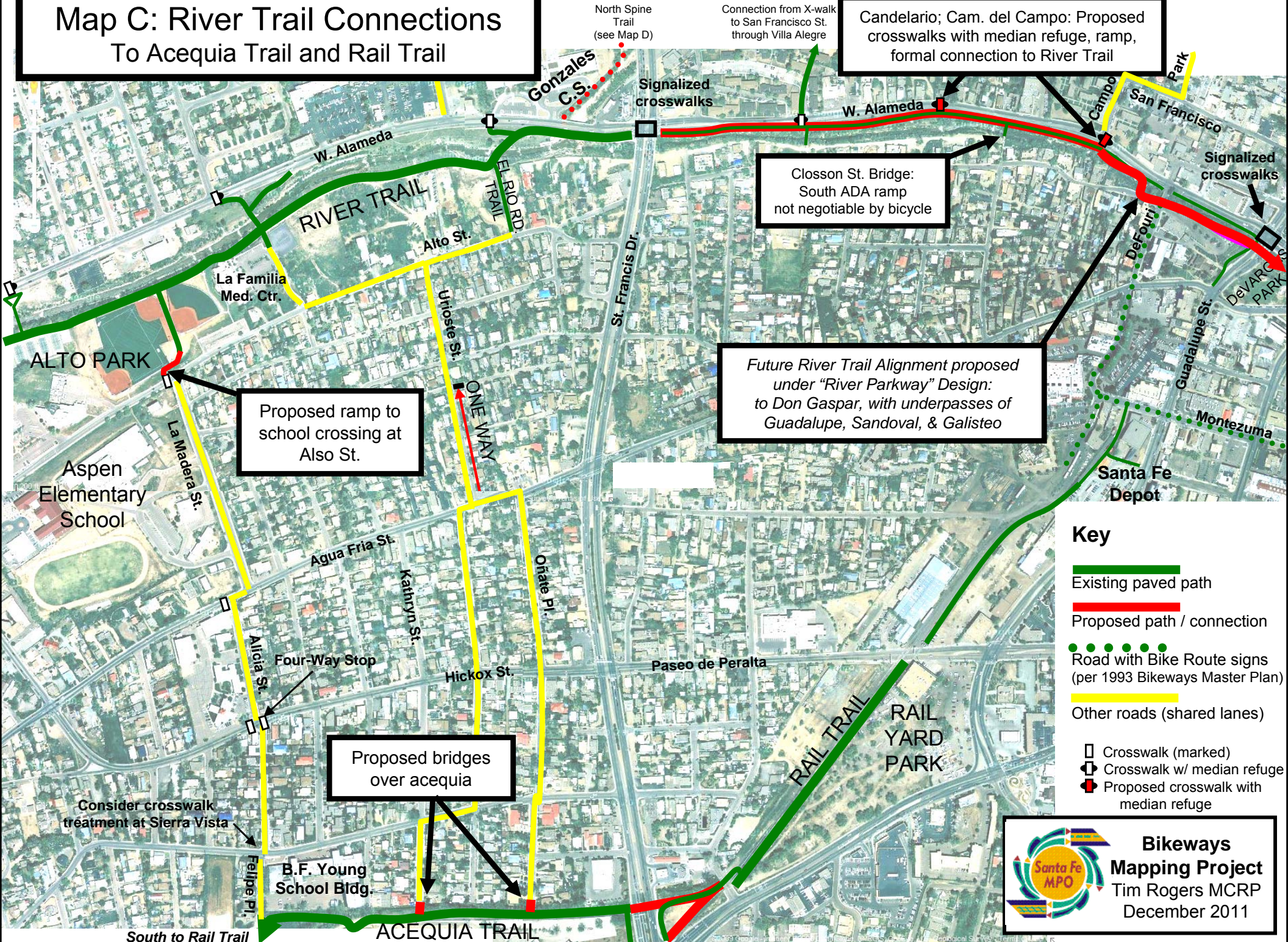


Proposed multi-use path





# Map C: River Trail Connections To Acequia Trail and Rail Trail















# Map D: "North Spine" Trail & Bikeway

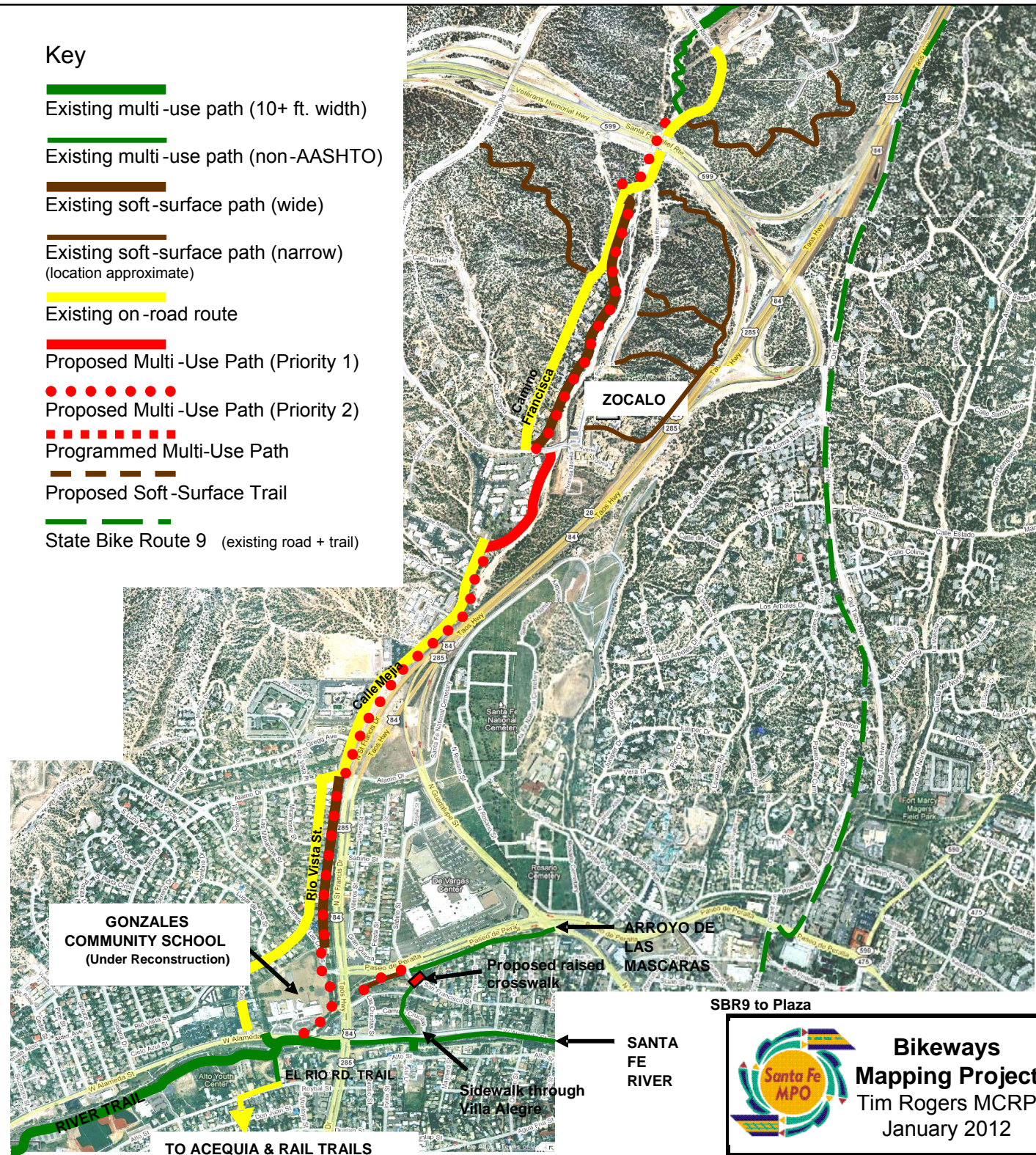
(partial view)

Existing and proposed  
On-road and Off-Road  
Connections between  
River Trail & Tano Rd.

(continued on next slide)

## Key

-  Existing multi-use path (10+ ft. width)
-  Existing multi-use path (non-AASHTO)
-  Existing soft-surface path (wide)
-  Existing soft-surface path (narrow)  
(location approximate)
-  Existing on-road route
-  Proposed Multi-Use Path (Priority 1)
-  Proposed Multi-Use Path (Priority 2)
-  Programmed Multi-Use Path
-  Proposed Soft-Surface Trail
-  State Bike Route 9 (existing road + trail)






**Bikeways  
Mapping Project**  
Tim Rogers MCRP  
January 2012



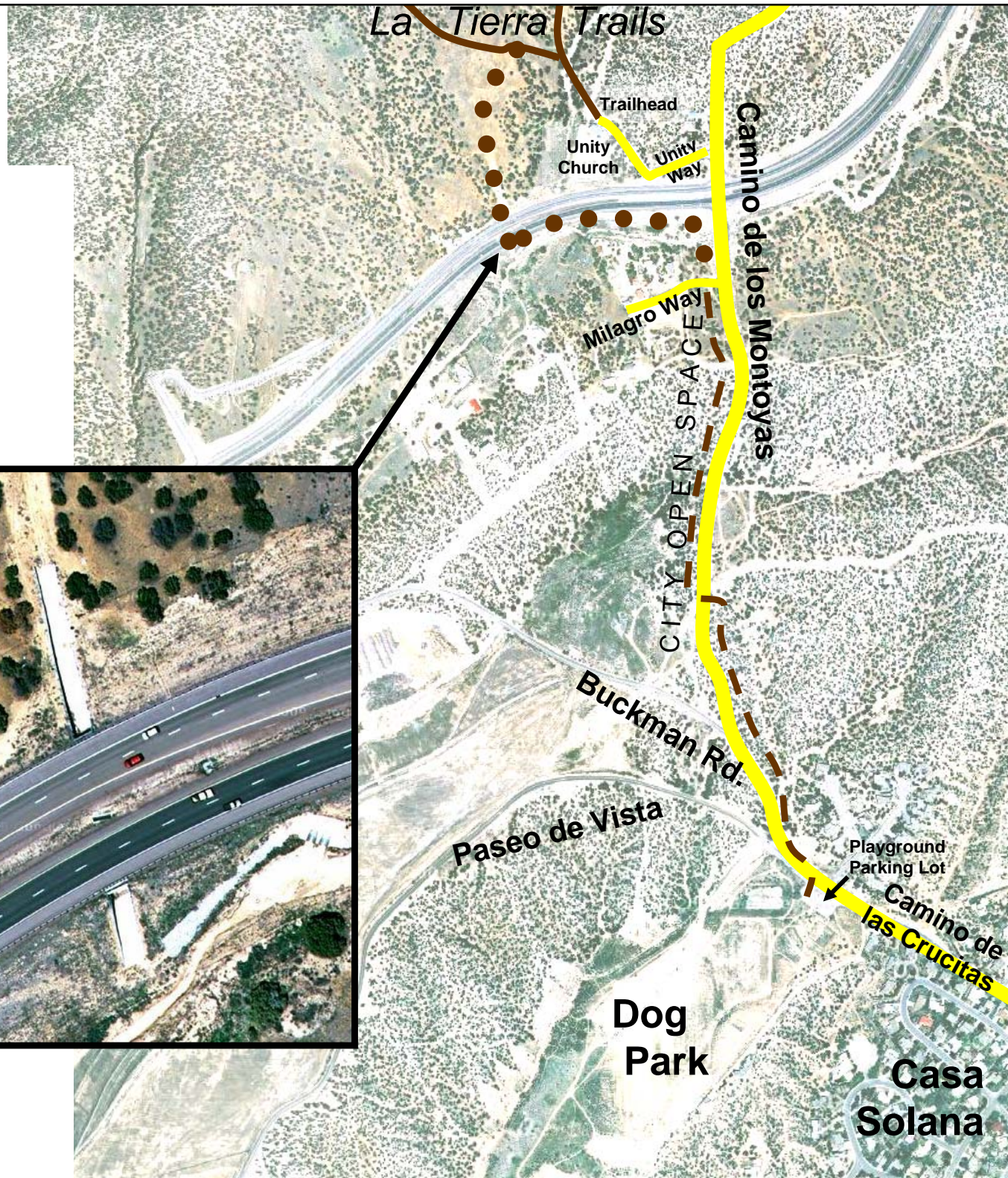




# Map E1: To La Tierra Trails via NM599 Underpass

-  Existing Soft-Surface Trail  
(part of La Tierra Trails)
-  Proposed Soft-Surface Trail:  
Priority 1
-  Proposed Soft-Surface Trail:  
Priority 2

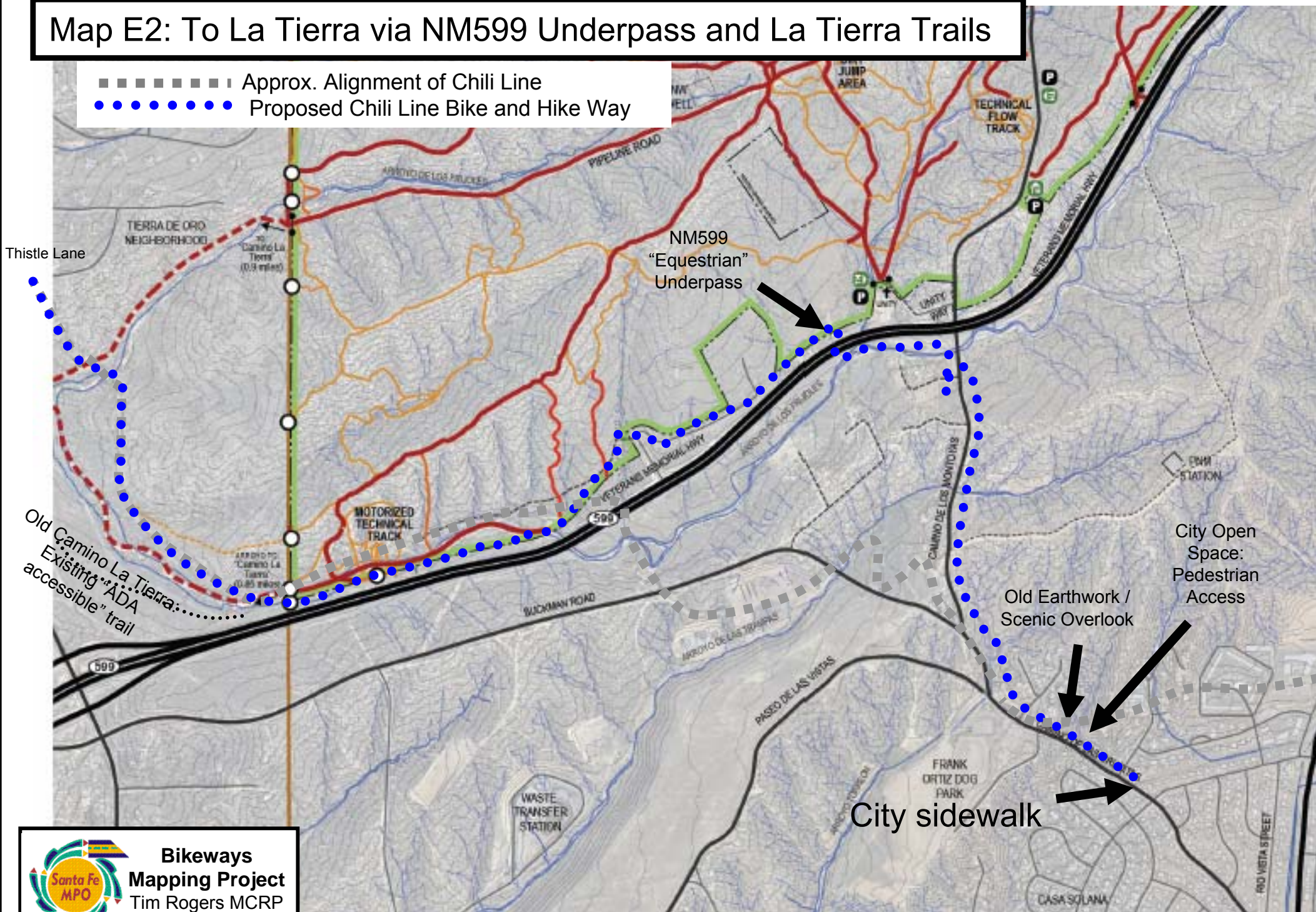
Inset:  
Aerial photo of existing  
"Equestrian Underpass"  
c. 1,000 ft. west of  
Camino de los Montoyas



**Bikeways  
Mapping Project**  
Tim Rogers MCRP  
February 2011



## Map E2: To La Tierra via NM599 Underpass and La Tierra Trails





# Map F: Acequia Bikeway and Ashbaugh Park Connections To River and Rail Trails

**KEY: TRAILS**

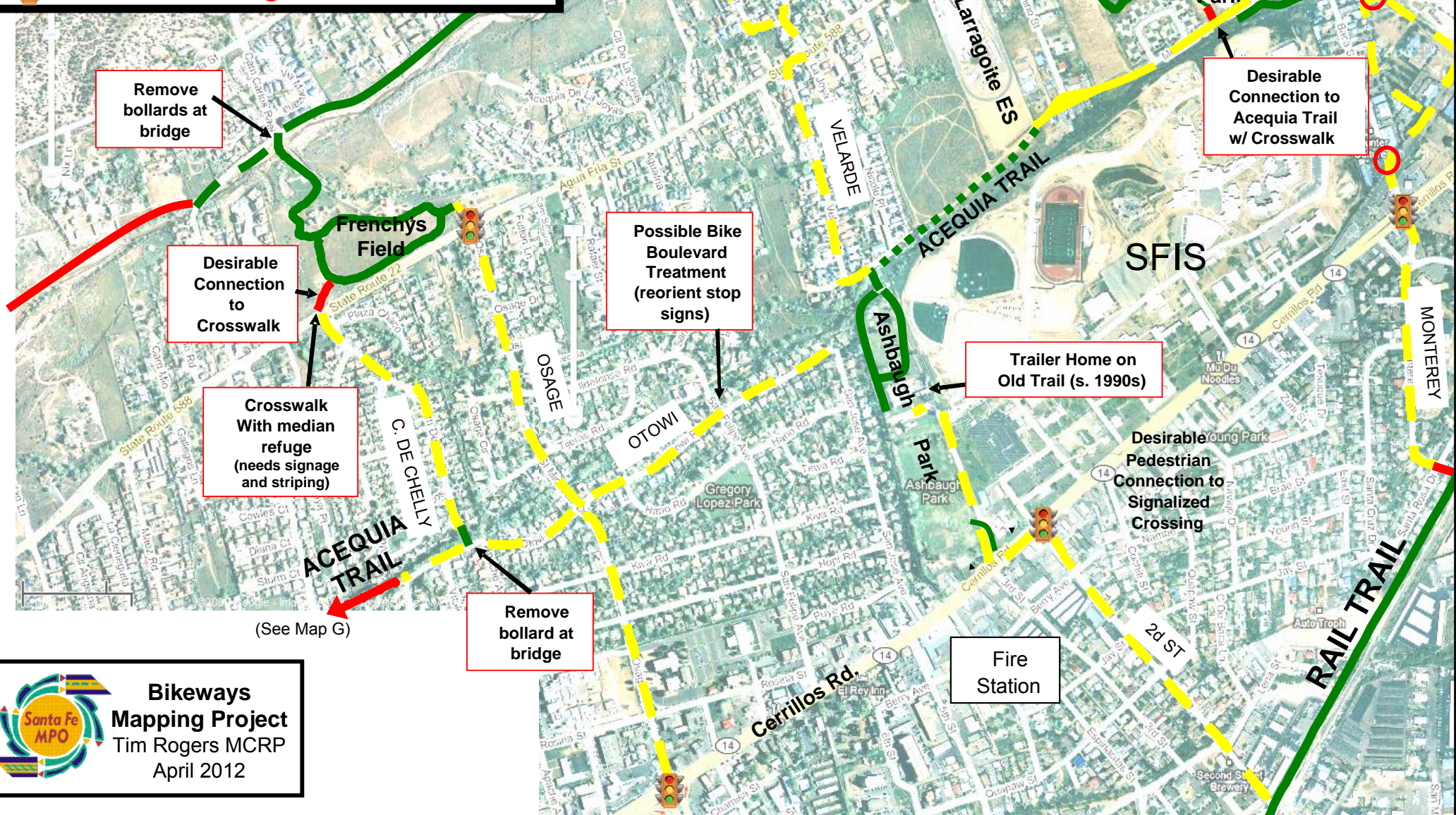
- Existing (Solid Green Line)
- Programmed (Dashed Green Line)
- Proposed: Priority 1 (Red Line)

**ROADS**

- On-Road Route (Yellow Line)

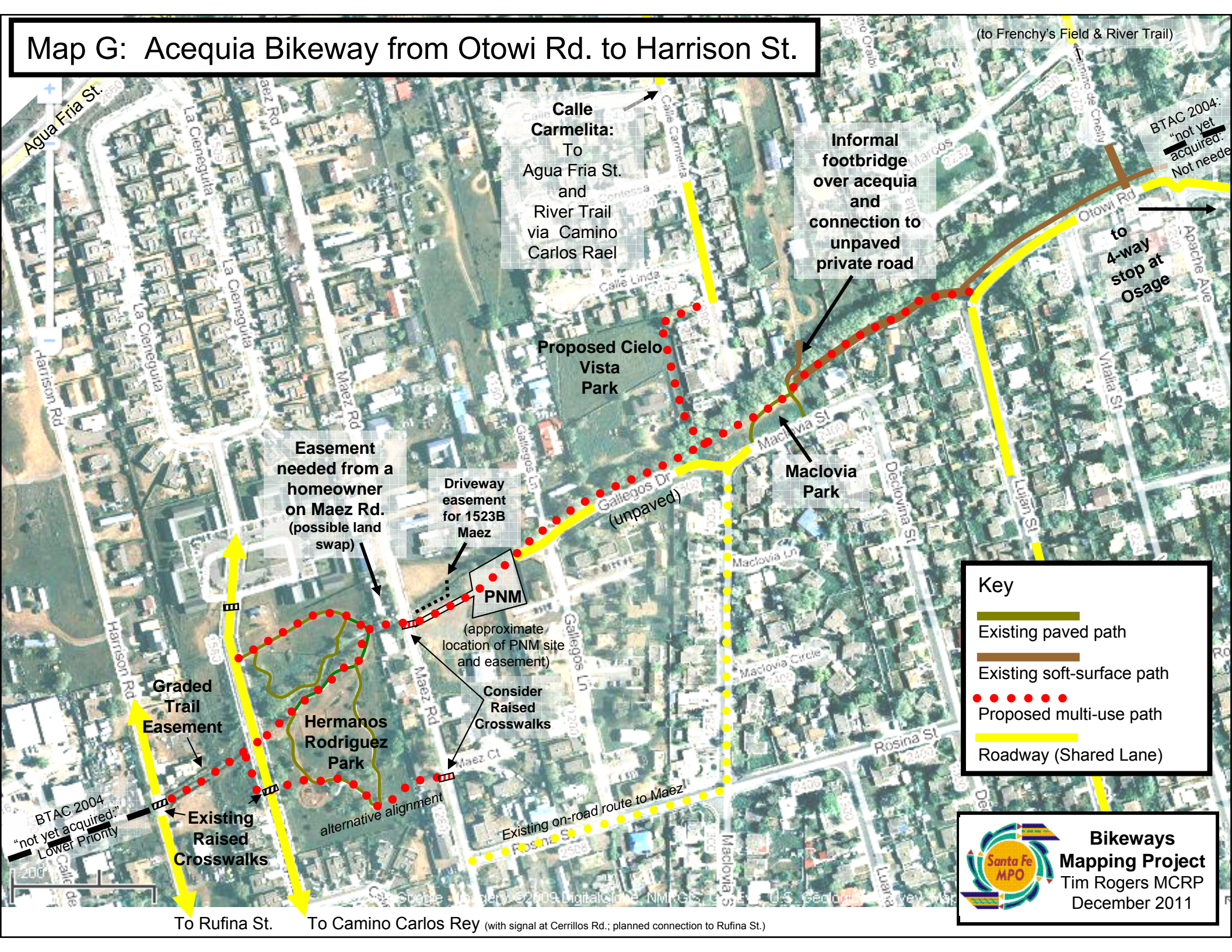
**Signalized Intersection** (Traffic Light Icon)

**Spot Improvement (W. Railyard)** (Red Circle)





# Map G: Acequia Bikeway from Otowi Rd. to Harrison St.



## Key

- Existing paved path
- Existing soft-surface path
- Proposed multi-use path
- Roadway (Shared Lane)



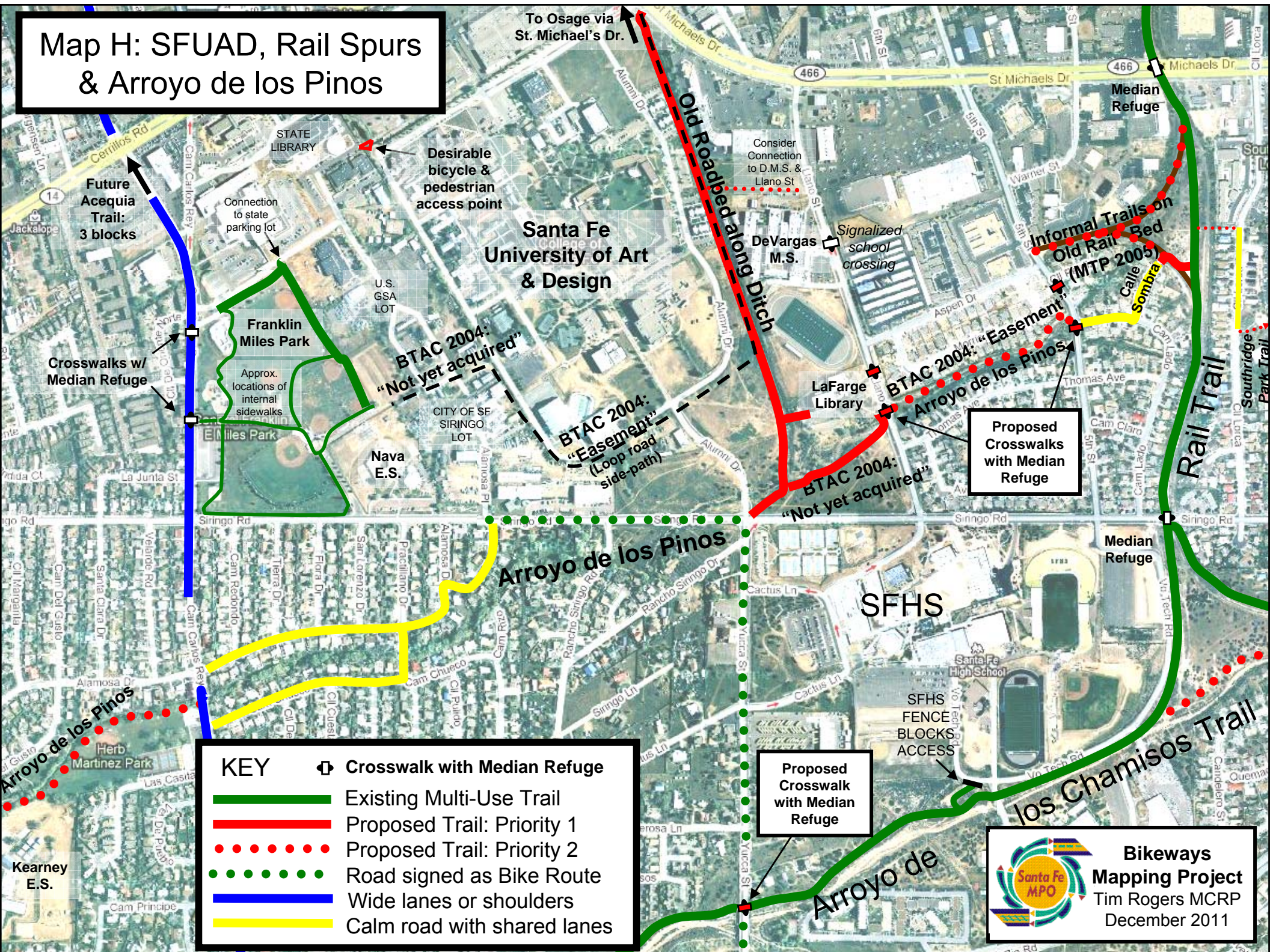
**Bikeways Mapping Project**  
Tim Rogers MCRP  
December 2011

To Rufina St.

To Camino Carlos Rey (with signal at Cerrillos Rd.; planned connection to Rufina St.)



## Map H: SFUAD, Rail Spurs & Arroyo de los Pinos





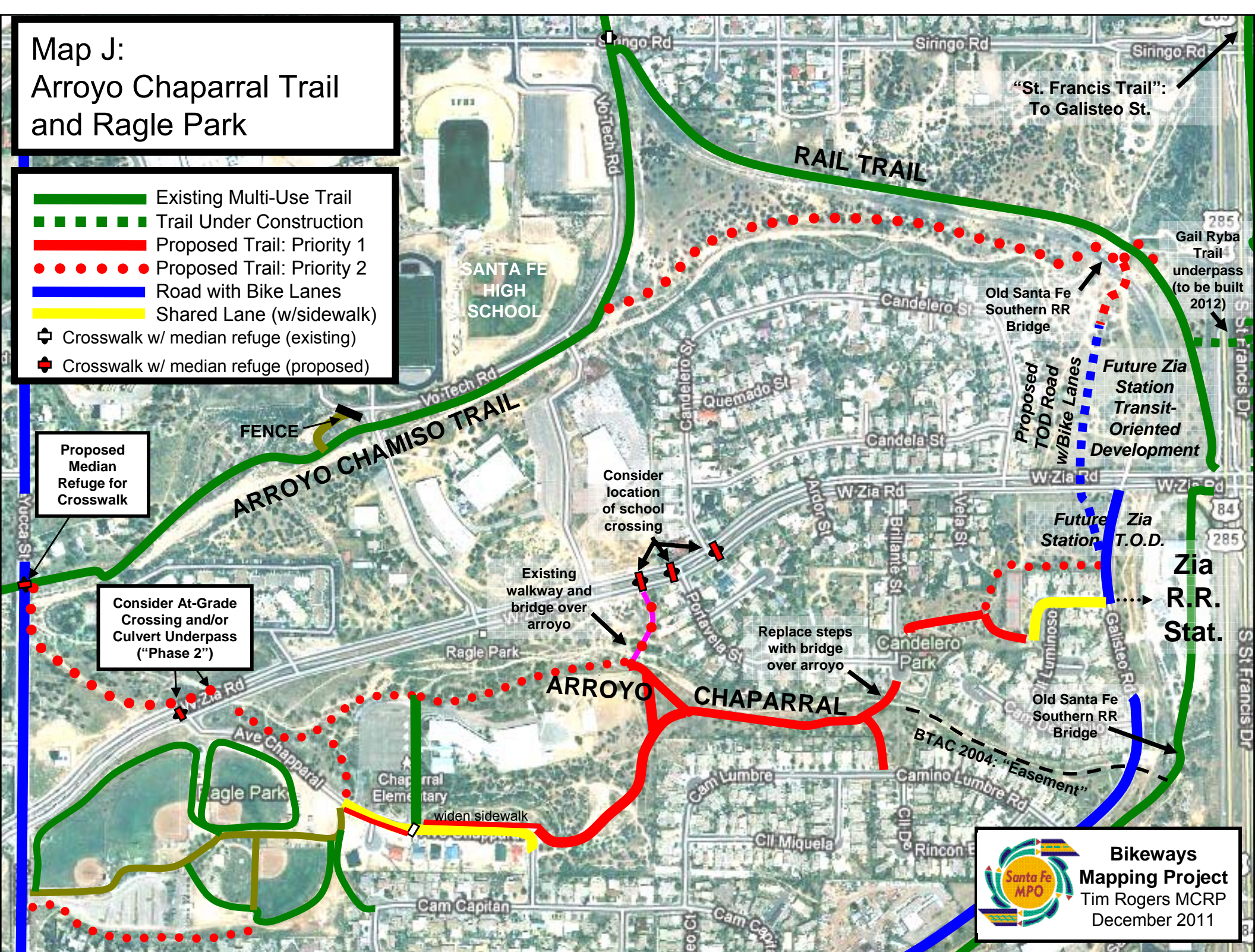






# Map J: Arroyo Chaparral Trail and Ragle Park

- Existing Multi-Use Trail
- - - Trail Under Construction
- Proposed Trail: Priority 1
- . . . Proposed Trail: Priority 2
- Road with Bike Lanes
- Shared Lane (w/sidewalk)
-  Crosswalk w/ median refuge (existing)
-  Crosswalk w/ median refuge (proposed)





# Map K: NM Central RR Line Trail (City Section)

Trail desired on this N-S alignment, per BTAC Big Picture (2004) Metro. Transp. Plan (2005)

GCCC

Signalized Crosswalk at "T" intersection

Park Plaza

Pueblos de Rodeo Rd.

Piñon ES

Park Plaza Trails: Private "Open Space"

Utility Line

Pueblos del Sol

Play-ground

## KEY

- Existing Multi-Use Trail
- Narrow Paved Trail or Sidewalk
- Proposed Trail: Priority 1
- Proposed Trail: Priority 2
- - - - - Programmed (by developers)
- - - - - Other Future Priority
- On-Road Route (shared lanes)
- ||||| Proposed Crosswalk

Las Soleras:  
See Inset S

Road and Trail Planned by Desert Sage

NM Central RR Line s. to Galisteo (see Map Z)



**Bikeways Mapping Project**  
Tim Rogers MCRP  
December 2011

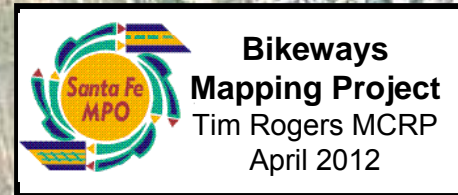
To Rail Trail / West Spur  
(@ Galisteo St.)



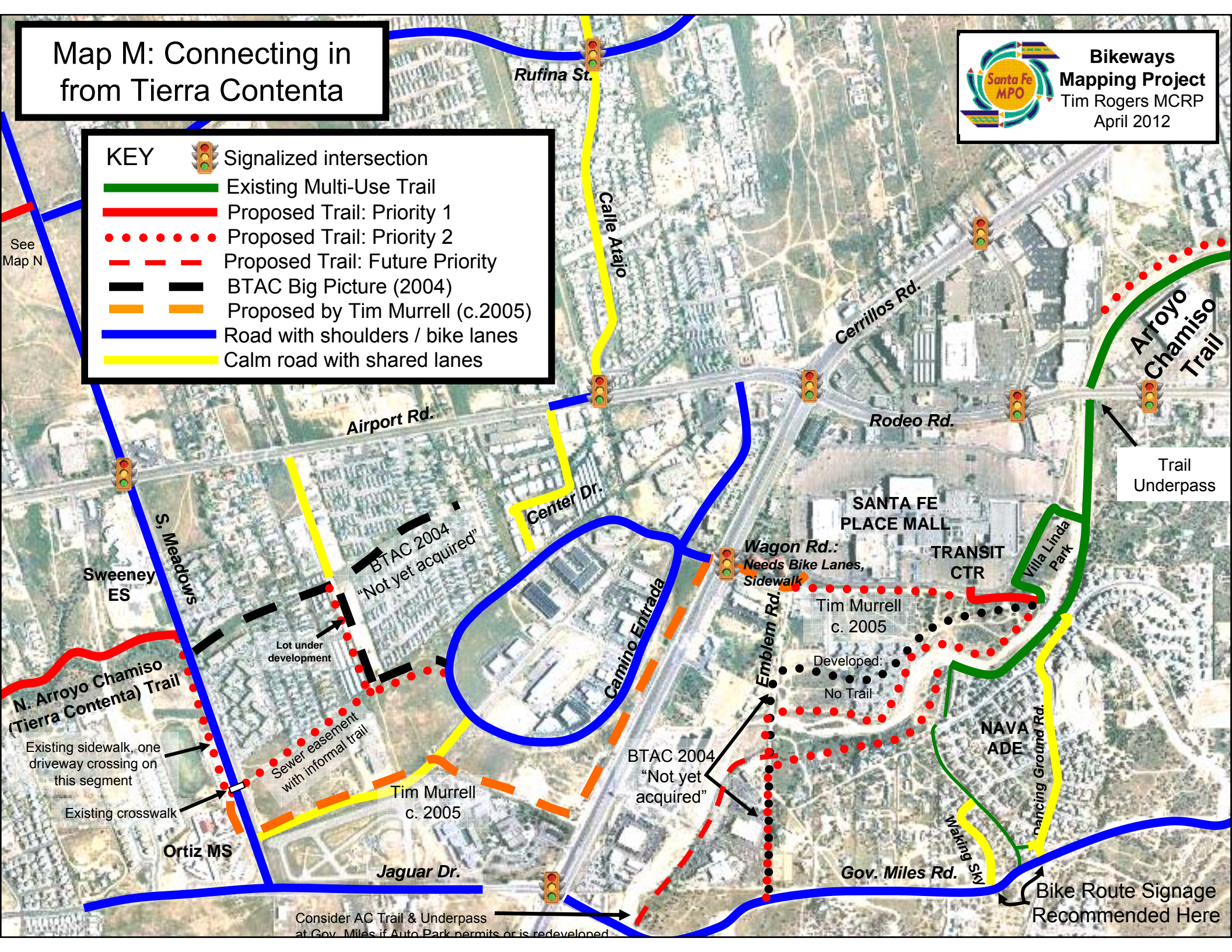




# Map M: Connecting in from Tierra Contenta




- KEY**
- Signalized intersection
  - Existing Multi-Use Trail
  - Proposed Trail: Priority 1
  - Proposed Trail: Priority 2
  - Proposed Trail: Future Priority
  - BTAC Big Picture (2004)
  - Proposed by Tim Murrell (c.2005)
  - Road with shoulders / bike lanes
  - Calm road with shared lanes







# Map N: SW Bikeway Connections

## Key - Roads


 Road with paved shoulder or bike lane


 Road with insufficient paved shoulder or bike lane


 Proposed bike lane or paved shoulder


## Key - Trails


 Existing Multi-Use Path

 Existing Side-path

 Existing soft-surface path

 Programmed multi-use path

 Proposed multi-use path (Priority 1)

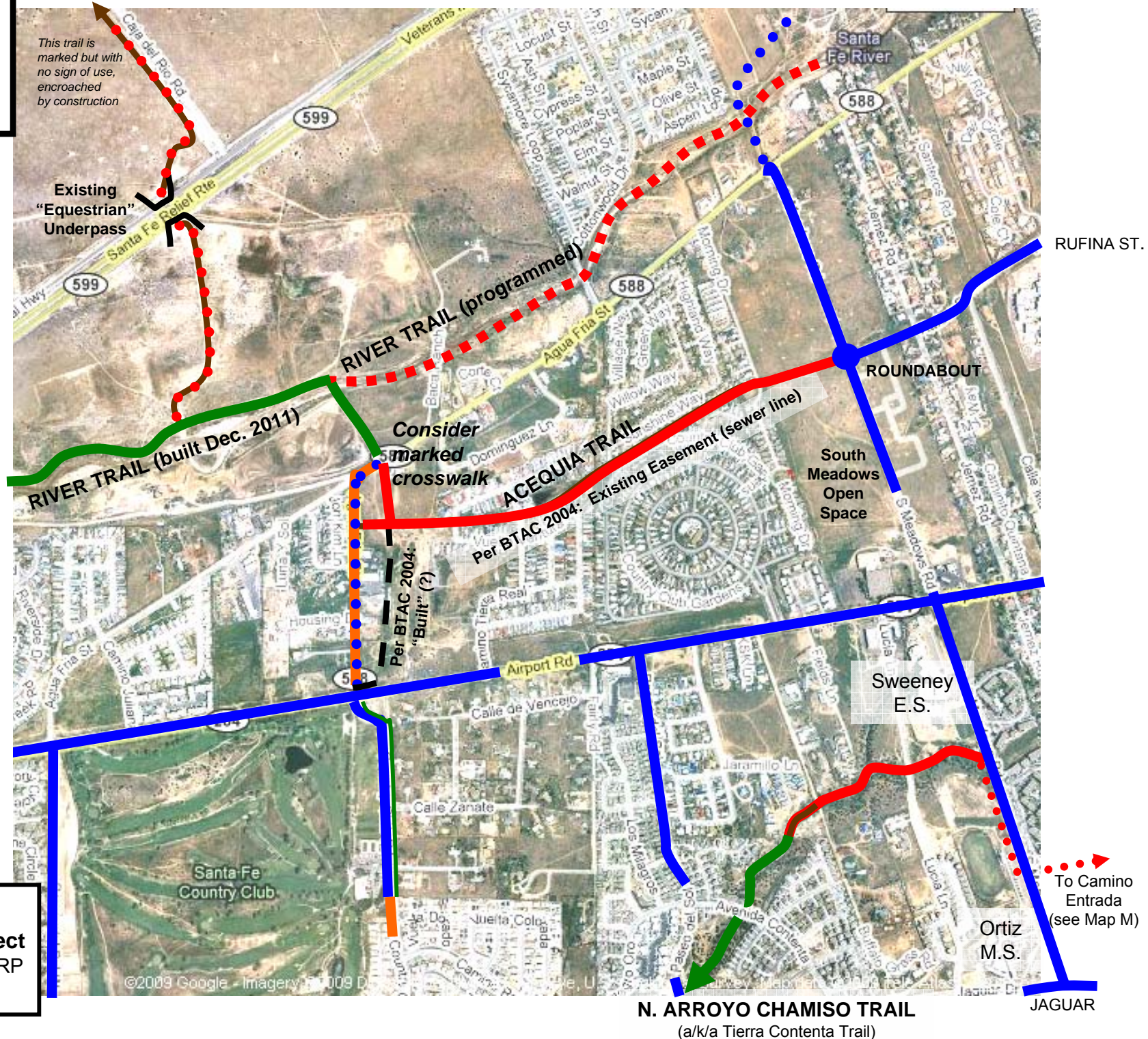
 Proposed multi-use path (Priority 2)

to MRC

*This trail is marked but with no sign of use, encroached by construction*

Existing "Equestrian" Underpass

MEADOWS EXT.





**Bikeways  
Mapping Project**  
Tim Rogers MCRP  
January 2012






# Map O: Municipal Recreation Center (MRC) Connections

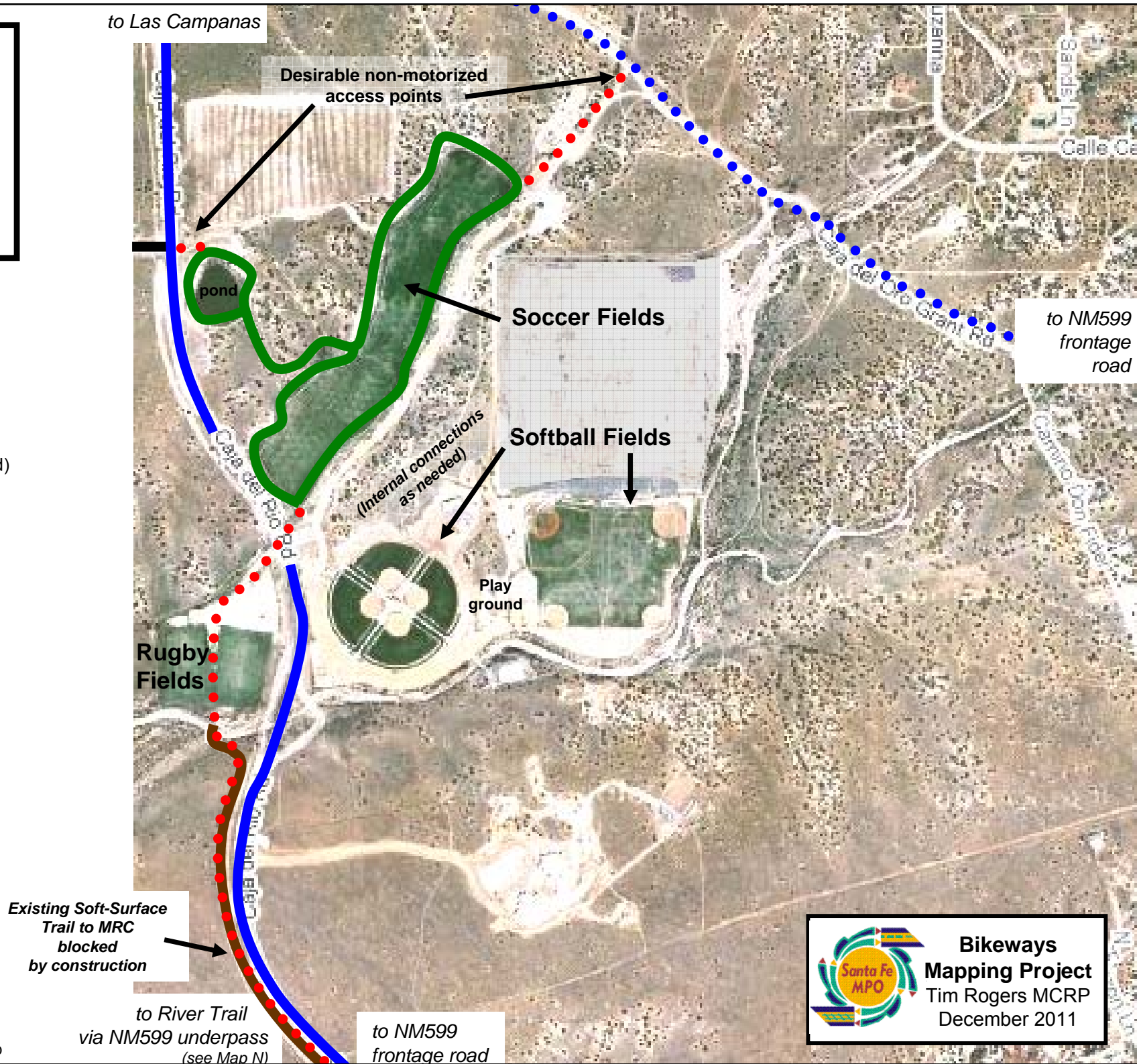
## Key - Roads

-  Road with paved shoulders or bike lanes
-  Proposed bike lanes or paved shoulders (when road is paved)

## Key - Trails

-  Existing Multi-Use Path
-  Proposed multi-use path
-  Existing soft-surface path\*

\*Various existing and proposed soft-surface trails have been intentionally omitted from this map

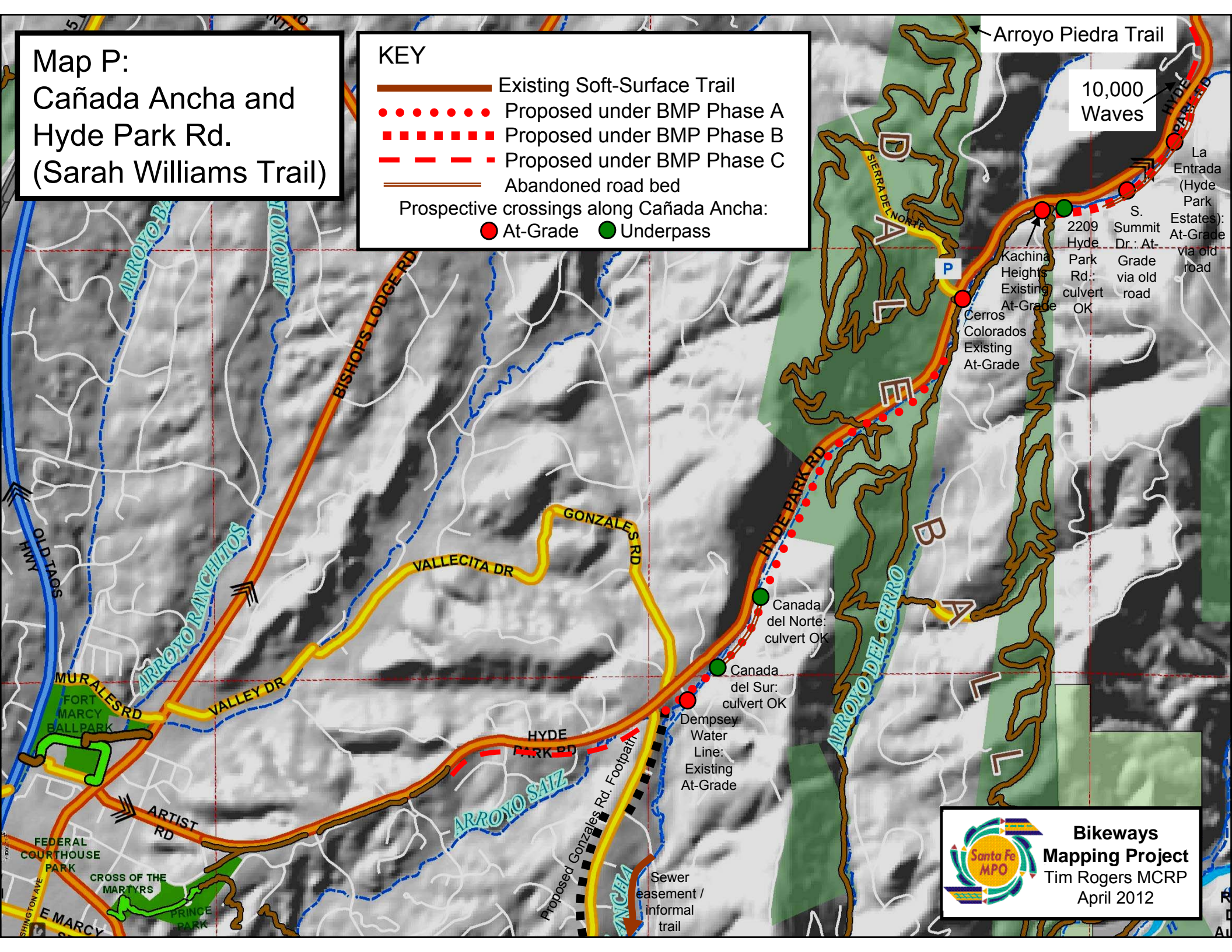




# Map P: Cañada Ancha and Hyde Park Rd. (Sarah Williams Trail)

## KEY

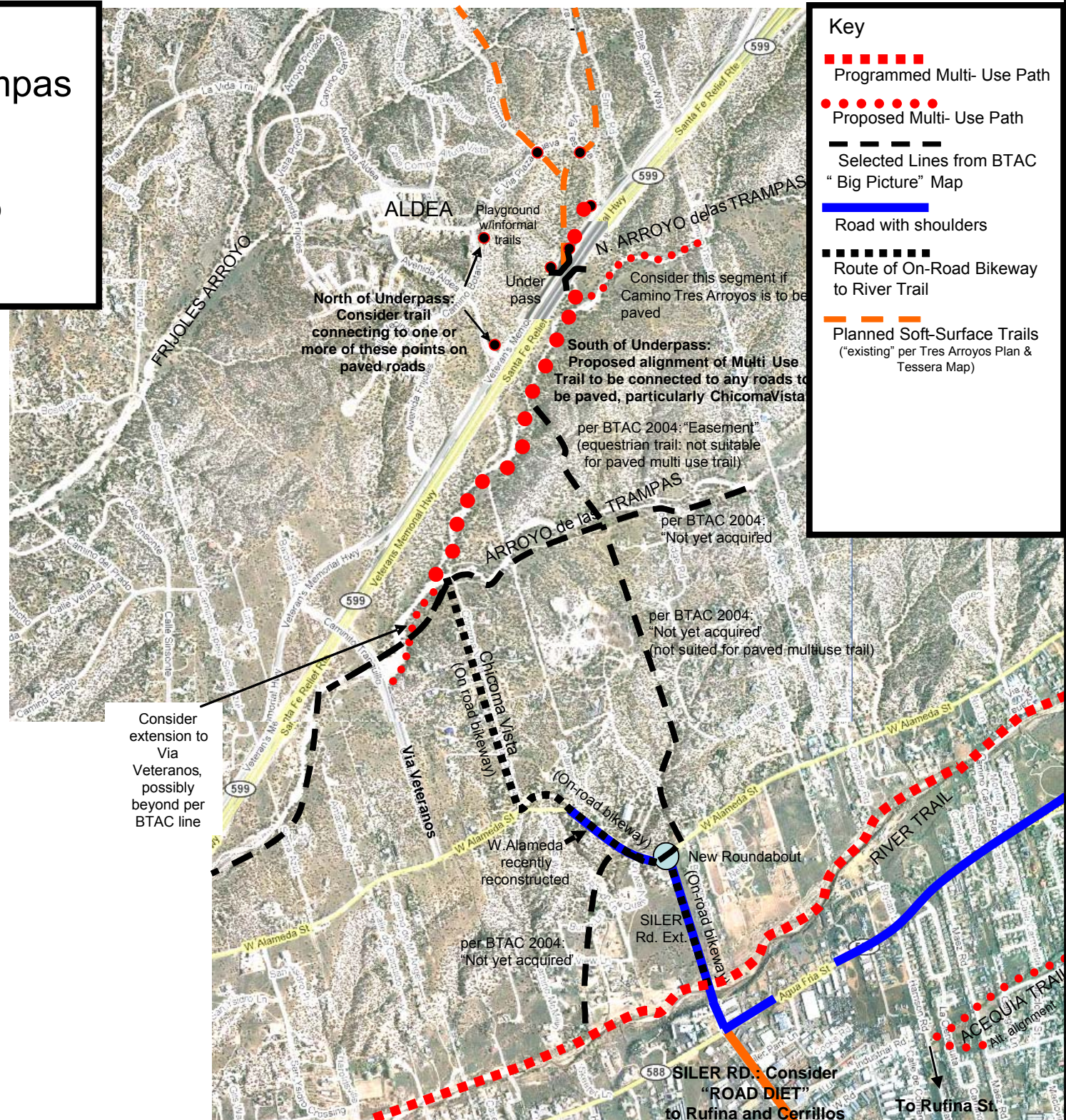
- Existing Soft-Surface Trail
  - ..... Proposed under BMP Phase A
  - ■ ■ ■ ■ Proposed under BMP Phase B
  - - - - - Proposed under BMP Phase C
  - Abandoned road bed
- Prospective crossings along Cañada Ancha:
- At-Grade
  - Underpass



**Bikeways  
Mapping Project**  
Tim Rogers MCRP  
April 2012



from Tres Arroyos area roads to  
City Trails and Roads  
via NM599 Underpass





# Map R: Arroyo Verde Trail & Bikeway Connecting Gonzales Rd. to Palace Ave.

GATE

## Key

- Existing multi-use path
- Proposed multi-use path (obtain/preserve easement)
- Roadway (Shared Lane)

















**Bikeways  
Mapping Project**  
Tim Rogers MCRP  
December 2011



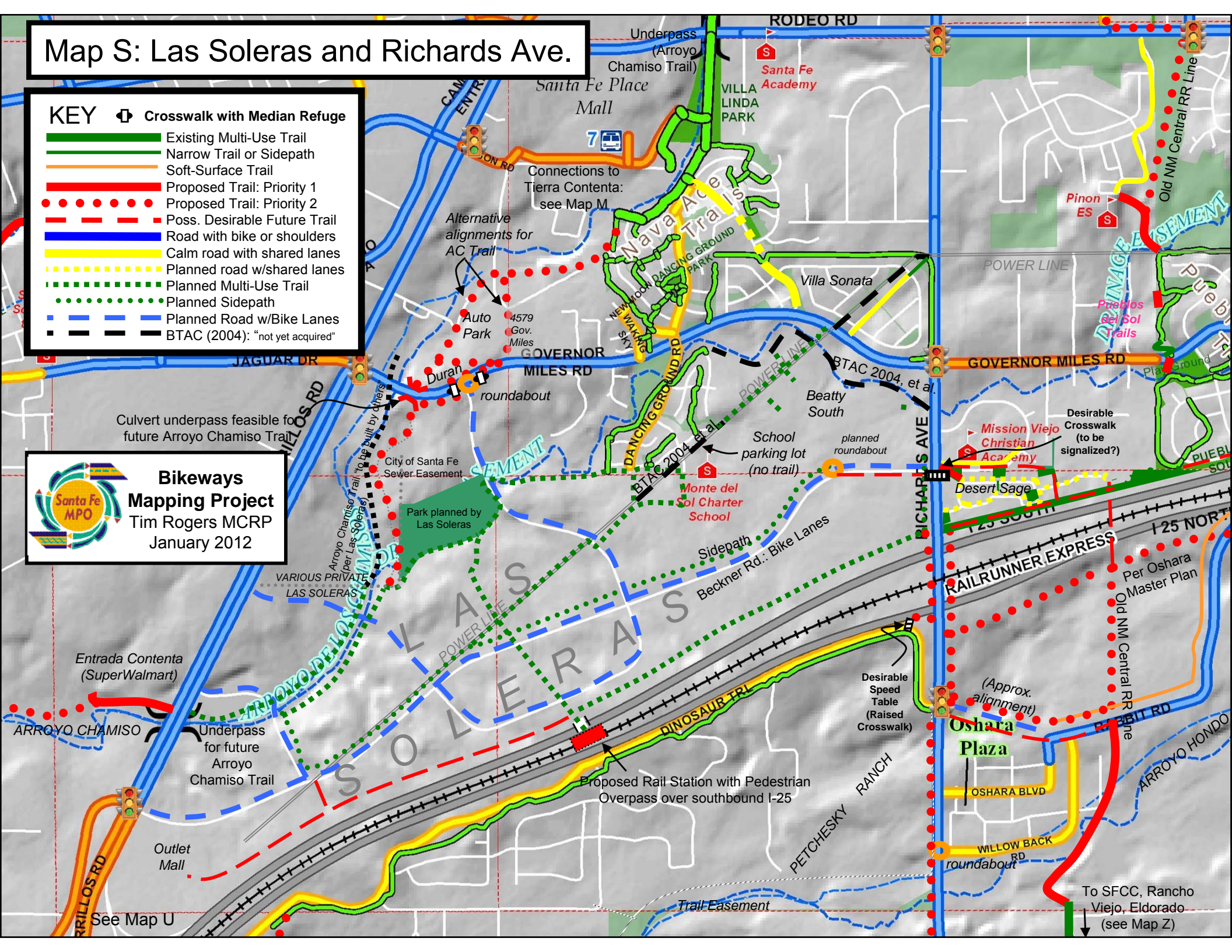
# Map S: Las Soleras and Richards Ave.

## KEY

-  Crosswalk with Median Refuge
-  Existing Multi-Use Trail
-  Narrow Trail or Sidepath
-  Soft-Surface Trail
-  Proposed Trail: Priority 1
-  Proposed Trail: Priority 2
-  Poss. Desirable Future Trail
-  Road with bike or shoulders
-  Calm road with shared lanes
-  Planned road w/shared lanes
-  Planned Multi-Use Trail
-  Planned Sidepath
-  Planned Road w/Bike Lanes
-  BTAC (2004): "not yet acquired"



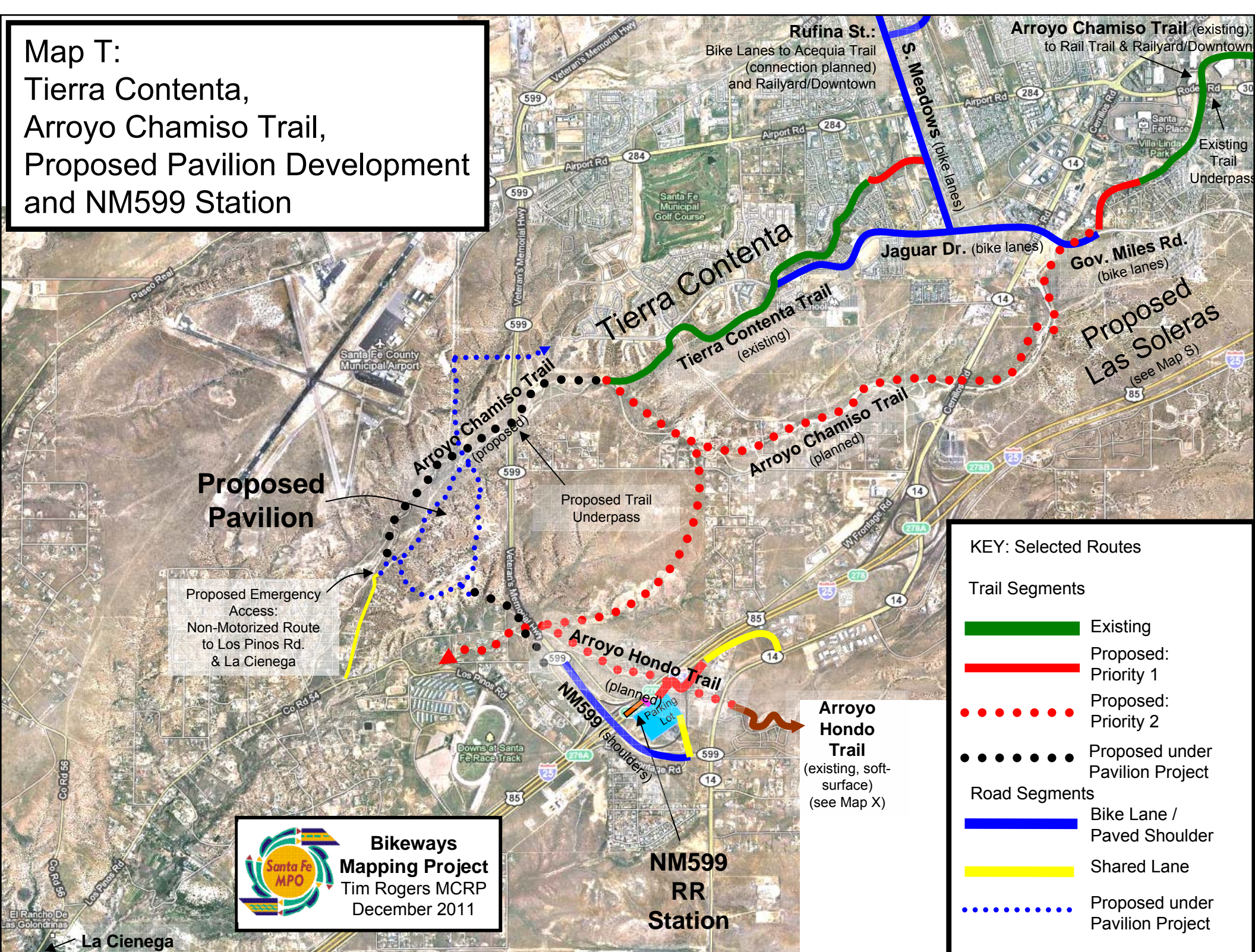
**Bikeways Mapping Project**  
Tim Rogers MCRP  
January 2012



To SFCC, Rancho Viejo, Eldorado (see Map Z)



# Map T: Tierra Contenta, Arroyo Chamiso Trail, Proposed Pavilion Development and NM599 Station



**Bikeways  
Mapping Project**  
Tim Rogers MCRP  
December 2011



# Map U: Prospective Bikeway Improvements via Reconstruction of I-25 Interchange at NM14

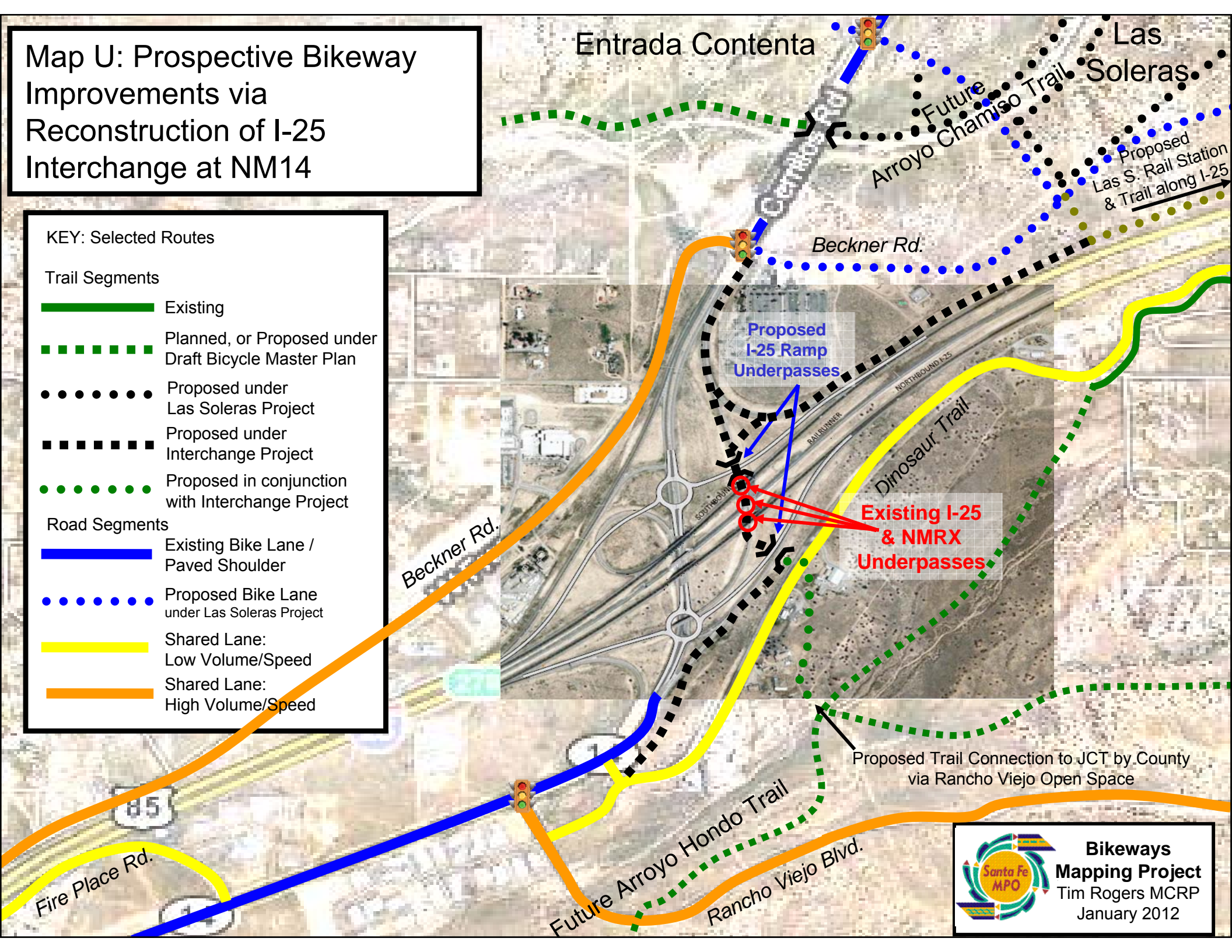
## KEY: Selected Routes

### Trail Segments

- Existing
- - - Planned, or Proposed under Draft Bicycle Master Plan
- . . . . . Proposed under Las Soleras Project
- - - - - Proposed under Interchange Project
- . . . . . Proposed in conjunction with Interchange Project

### Road Segments

- Existing Bike Lane / Paved Shoulder
- . . . . . Proposed Bike Lane under Las Soleras Project
- Shared Lane: Low Volume/Speed
- Shared Lane: High Volume/Speed



**Bikeways Mapping Project**  
Tim Rogers MCRP  
January 2012



ELDORADO

# Map V: I-25 / Cañoncito Intg. with Old Las Vegas Highway / Bike Route 66

Proposed Shoulder  
Improvements and/or Lane  
Width Reduction for  
Old Las Vegas Highway  
(FR2108):  
US285 to Paseo de la Luz  
1.6 miles

Cañoncito  
Interchange

Proposed Road Diet for  
Old Las Vegas Highway  
(FR2108):  
West bound Climbing Lane,  
Paseo de la Luz to  
Ojo de la Vaca Rd.  
0.6 miles

West bound Climbing  
Lane on Old L.V. Hwy.



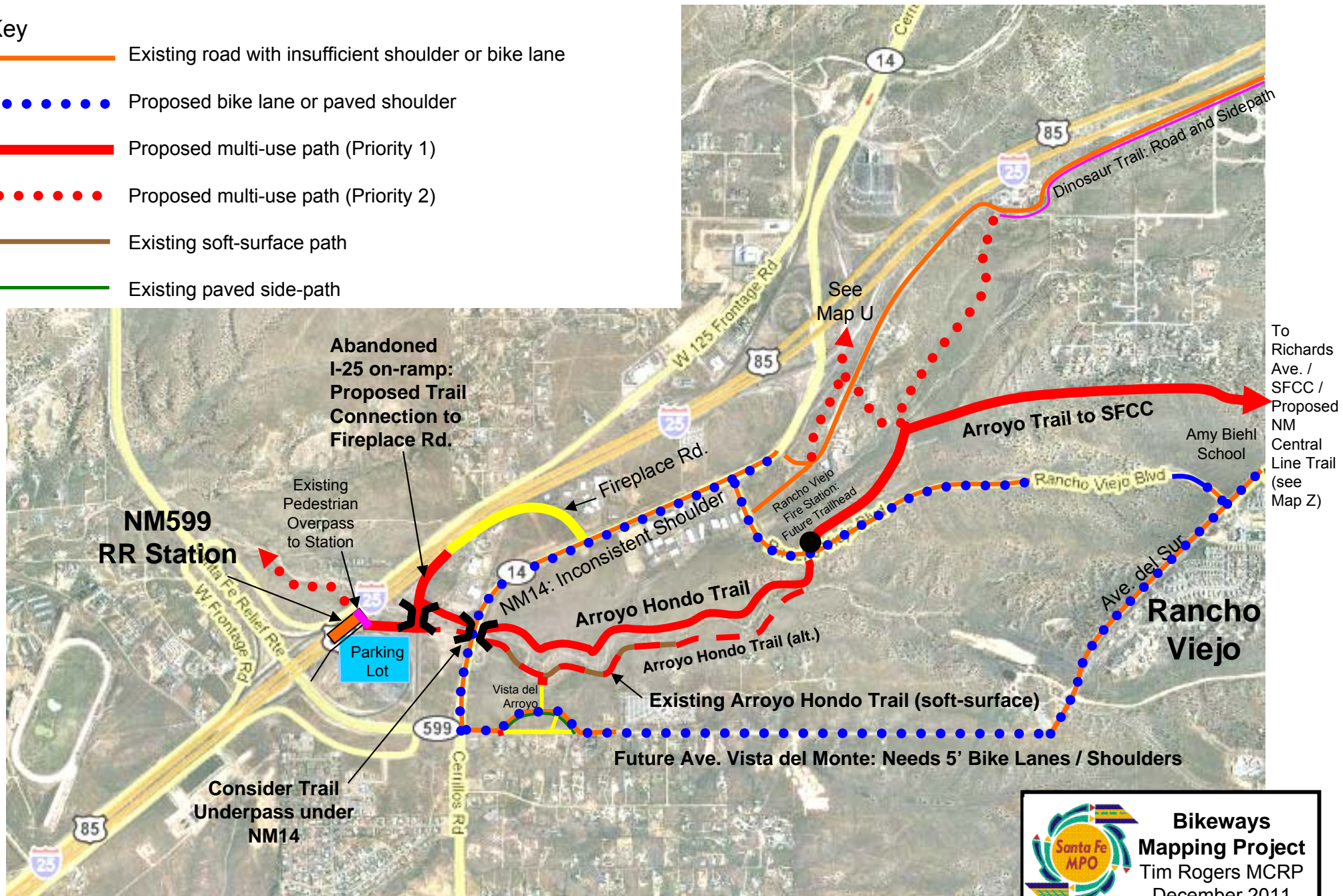
**Bikeways  
Mapping Project**  
Tim Rogers MCRP  
December 2011



# Map X: Bikeway Connections from Rancho Viejo to NM599 Train Station

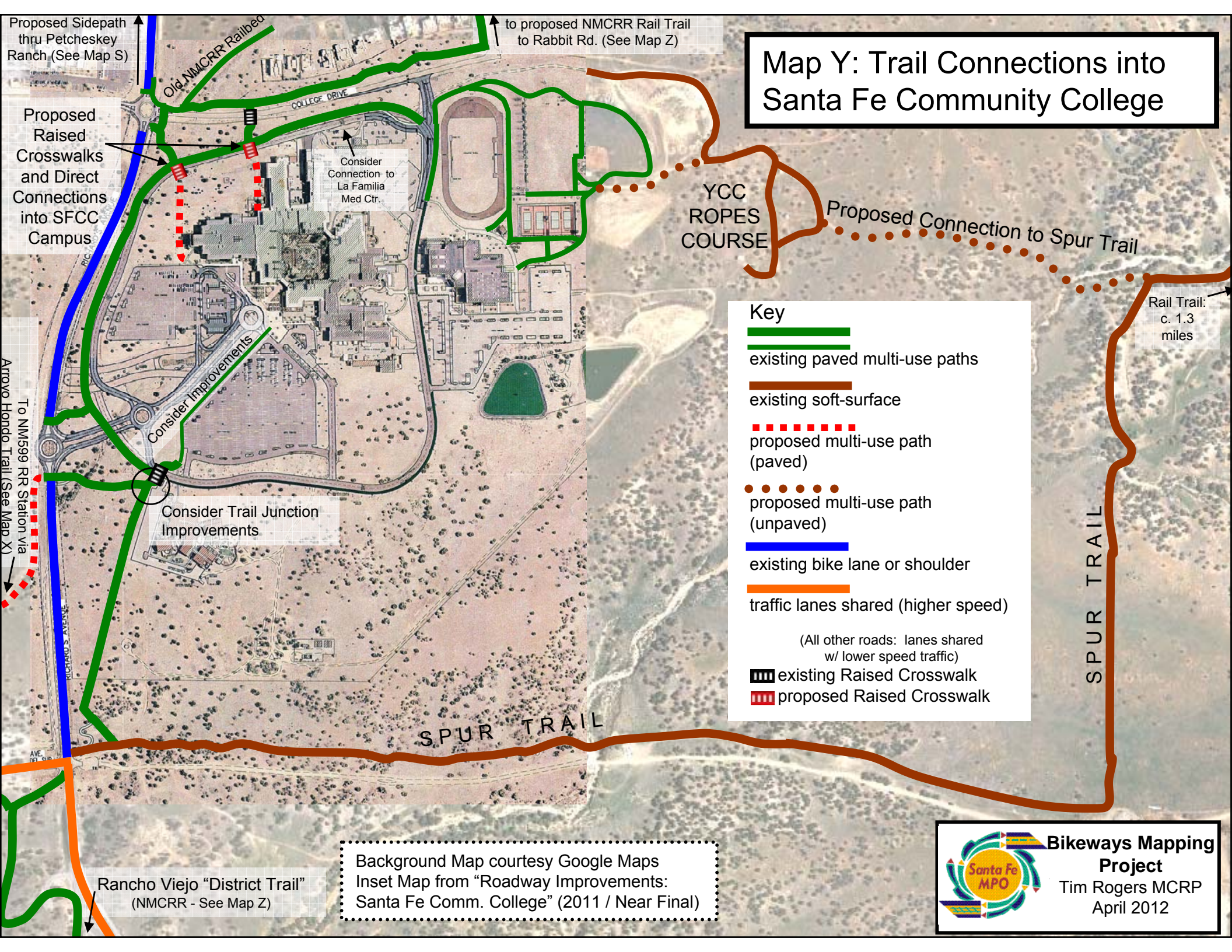
## Key

- Existing road with insufficient shoulder or bike lane
- Proposed bike lane or paved shoulder
- Proposed multi-use path (Priority 1)
- Proposed multi-use path (Priority 2)
- Existing soft-surface path
- Existing paved side-path





# Map Y: Trail Connections into Santa Fe Community College





# MPO Bikeways Mapping Project

## Map Z: NM Central Line (SF County)

Pieces of a  
Regional Bikeway  
Connecting  
Downtown to  
Community College  
District & beyond

Via NM Central and  
SF Southern RR Lines

### Key

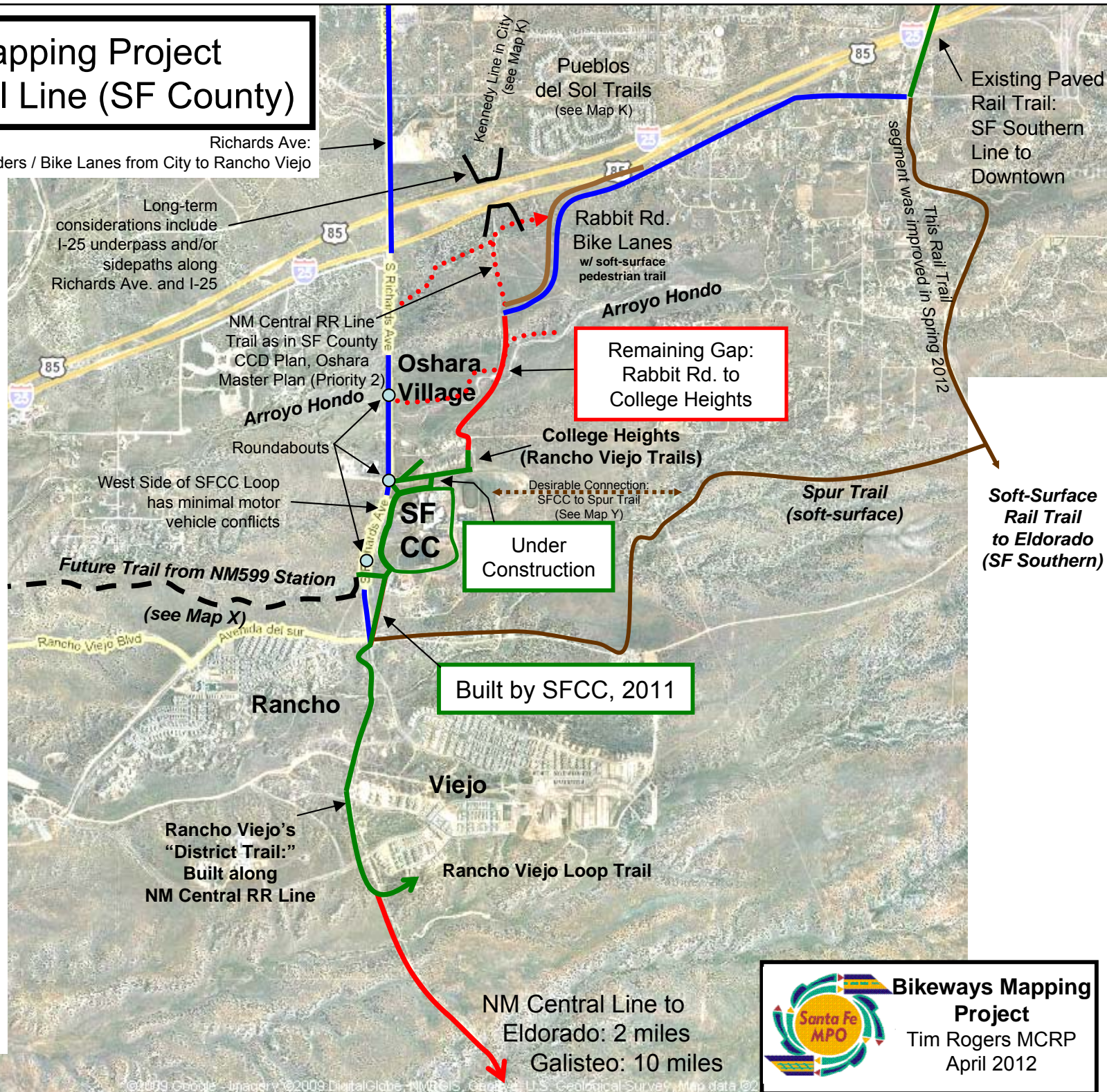
existing paved multi-use  
paths

proposed multi-use path  
(priority 1)

proposed multi-use path  
(priority 2)

existing on-road bike lane /  
shoulder

existing soft-surface path



**Bikeways Mapping Project**  
Tim Rogers MCRP  
April 2012