

Santa Fe MPO Metropolitan Transportation Plan 2020-2045

EXECUTIVE SUMMARY

WHY TRANSPORTATION MATTERS

Transportation is a basic human need that affects our quality of life every day. Nearly every life decision is impacted by our transportation options; from small decisions like *“How will I get to the coffee shop this morning?”* to major decisions like *“How far away from my job do I want to live?”* Our residents use transportation to get to work, school, medical facilities, recreational amenities, shopping, and other community and social activities.

A well-connected and efficient transportation network allows **access to higher paying and varying job types**, a wider selection of **housing options**, and more convenient **health and human services**. An integrated multimodal transportation system allows residents and visitors of our region the **freedom of personal mobility** and choice of how to travel—whether it’s walking, biking, driving, carpooling, or riding public transportation.

“Getting to jobs, getting to school, getting to the doctor...and connecting us to one another — we can’t do any of it without good, affordable, safe transportation options.”

- Center for Social Inclusion

Walkable, bikeable, transit-oriented communities are associated with healthier populations that have:



more
physical
activity



lower
body
weight



lower rates
of traffic
injuries



less air
pollution



improved
mobility for
non-drivers

ADOPTED MAY 28, 2020



VISION CREATE AND MAINTAIN A SAFE, EFFICIENT, AND RELIABLE TRANSPORTATION SYSTEM WITH VIABLE TRANSPORTATION OPTIONS ACCESSIBLE TO ALL USERS.

OUR VISION

This MTP complies with federal and state requirements. The plan is important because it guides investment of federal, state, and local transportation funds. It reflects our community's vision for the future transportation system, and it includes strategies, projects, and funding options to realize that vision.

GOALS

SAFETY: A safe and secure transportation system for motorized and non-motorized users.

PUBLIC HEALTH: A transportation system that supports healthy lifestyles.

SOCIAL EQUITY: Equitable investments in transportation that enable quality of life for all residents.

MULTIMODAL MOBILITY & ACCESSIBILITY: An accessible, connected, and integrated transportation system.

ENVIRONMENTAL STEWARDSHIP: A transportation system that protects and enhances the natural, cultural, and built environment and mitigates climate change.

CONGESTION RELIEF & SYSTEM OPERATIONS: An efficient and reliable transportation system poised to leverage emerging technologies.

ECONOMIC & COMMUNITY VITALITY: A transportation system that supports economic and community vitality.

SYSTEM PRESERVATION: A well-maintained transportation system.

PARTNERSHIP & FUNDING: Regional collaboration in transportation planning, funding, and implementation.

PUBLIC ENGAGEMENT

The Santa Fe MPO reached out to thousands of stakeholders across the region through an internet survey, stakeholder meetings, an open house, community tabling, and many other means.

THE COMMUNITY OUTREACH EFFORTS FOR THIS PLAN WERE BROAD BASED, INCLUSIVE, AND ENCOURAGED ACTIVE PARTICIPATION IN IDENTIFYING THE VISION, GOALS, AND NEEDS OF THE REGION.

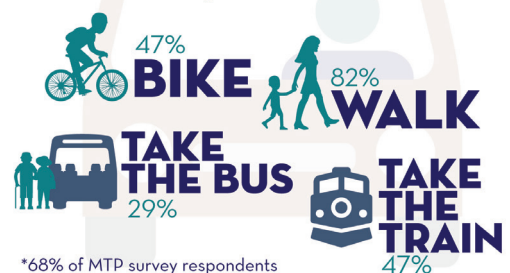
WHAT WE HEARD

We asked in a survey: "How well does the current transportation system meet your needs?" The responses show that our system works well for the automobile, but there are opportunities to improve the functionality for other travel modes.

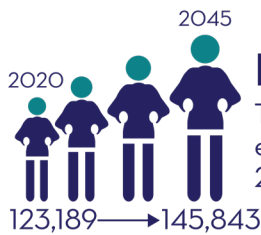
Recurring themes from previous public outreach:

1. Increase connectivity for all modes
2. Provide equitable access
3. Design for transportation options
4. Improve safety
5. Increase frequency and expand evening and weekend transit services
6. Improve the quality of transportation facilities

Many Santa Feans who drive are already occasionally multimodal by choice.
449* daily car drivers also...



PEOPLE AND PLACES



POPULATION

The region's population is expected to grow approximately 20% over the next 25 years.

The age of Santa Feans follows a typical bell curve, however; there is a striking distinction in our region between where younger and older citizens live. The aging population is largely concentrated in the northern part of the region, and younger residents are more heavily concentrated in the west side of the urban core.

population BY AGE GROUP



RACE AND ETHNICITY

New Mexico is known for its three predominant cultures: Native American, Hispanic, and Anglo. The largest racial/ethnic demographic in the region is Hispanic at 42%. Just over 3,000 Native Americans live in the region.



PEOPLE WITH DISABILITIES

~19,000 people, or 13% of the population, have a disability and may require special transportation considerations.

HOUSEHOLD INCOME

The average household income in the region is \$64,800.

COMMUTER FLOWS

Nearly 25,000 people who work in Santa Fe live outside the city limits. There are also over 13,000 Santa Fe residents who commute to other places. Combined, these commute flows result in an extra 12,000 people in Santa Fe.

ZERO VEHICLE HOUSEHOLDS

~2,000 households, 3.5% of the total, in the region do not own a vehicle.



DEMOGRAPHICS

Understanding our region's demographics helps inform transportation investment decisions to achieve the region's **social equity goal**.

SANTA FE METROPOLITAN PLANNING AREA (MPA)

Santa Fe County

TRANSPORTATION & CLIMATE CHANGE

Climate change is projected to increase the frequency of extreme weather events, which will increase the risk of damage, disruption, and delays to the transportation system.

Transportation is the economic sector responsible for the majority of carbon dioxide emissions. The transportation industry must capitalize on greenhouse gas reduction strategies, such as:

- Increasing the availability and reliability of alternative modes
- Building the infrastructure necessary to make communities more bikeable and walkable
- Zoning for mixed-use areas so that jobs, housing, and amenities are closer to one another

Over 500 students in Santa Fe (and thousands from around the world) marched in multiple demonstrations in support of stronger government action against climate change.



GETTING AROUND

TRANSIT & RAIL

Five public agencies offer public transit service in the Santa Fe area.

The Santa Fe MPO's Public Transit Master Plan recommends:

- Regionally coordinated transit technology and rider information
- Increased evening and weekend services
- Additional human services and medical facilities access
- Safety and security advancements
- Improved first and last mile connections

BIKEWAYS

Santa Fe's bikeway system includes bike lanes, striped shoulders, shared lanes, and paved multi-use trails and soft-surface paths.

The 2019 Bicycle Master Plan envisions a bicycle network that serves all ages and abilities. It identifies over **90 miles** of major urban trails and **40 miles** of on-street connectors forming a network of safe bicycling facilities.

ANNUAL TRANSIT RIDERSHIP

SANTA FE PICK-UP
72,000

NM PARK AND RIDE*
232,830

NCRTD*
294,310

RAIL RUNNER EXPRESS
744,050

SANTA FE TRAILS
759,500

*Fixed routes serving Santa Fe

PEDESTRIAN

Pedestrian facilities in Santa Fe include sidewalks, crosswalks, formal and informal pathways. The Santa Fe area has over **450 miles** of sidewalks and trails.

Miles of Sidewalks and Trails

Sidewalks on at least one Side	Major	Minor
348	62	45
Urban Trails		

The 2019 Pedestrian Improvement Project prioritizes pedestrian projects including bus stops, curb ramps, sidewalks, and intersections. It identifies 40 miles of high-priority sidewalk projects, that are proximate to youth and older adults, schools, population density, low-income population, and transit stops.

STREET SYSTEM

An effective street network is vital to the well-being of the region. Drivers, bicyclists, pedestrians, and transit riders are all street users.

The MTP focuses on enhancing multimodal options on our streets and increasing the efficiency for passenger vehicles and freight movement. Mobility improvements are needed on corridors like I-25, NM 599, St. Francis Drive, Cerrillos Road, and Agua Fria Street to accommodate year 2045 traffic congestion levels and to ensure mobility for non-vehicular travel and freight/commerce.



TRANSPORTATION REIMAGINED

The three topics of sustainability, public health, and social equity offer a **new lens** through which we explore **transportation design tools** to help achieve the **transportation options** desired by our community.



SUSTAINABILITY

Transportation plays an important role in creating a sustainable Santa Fe – from reducing vehicle emissions through conversion to electric vehicles and shifts to cleaner travel modes like biking, walking, and transit. **Sustainable transportation solutions are a critical element to reversing the effects of climate change.**

Quality of life in Santa Fe is influenced by our ability to move around the city in ways that are sustainable, offer public health benefits, and are equitable for all community members.



PUBLIC HEALTH

Healthy transportation can help prevent chronic illness and protect and prolong life by:

- Encouraging reliable, safe, and cost-effective **transportation options**;
- Emphasizing the importance of moving **people rather than vehicles**;
- Increasing **active and public transportation** options for all; and
- Leveraging transportation to **connect people to jobs, schools, parks, healthcare, family and friends, healthy food, recreation, and entertainment.**

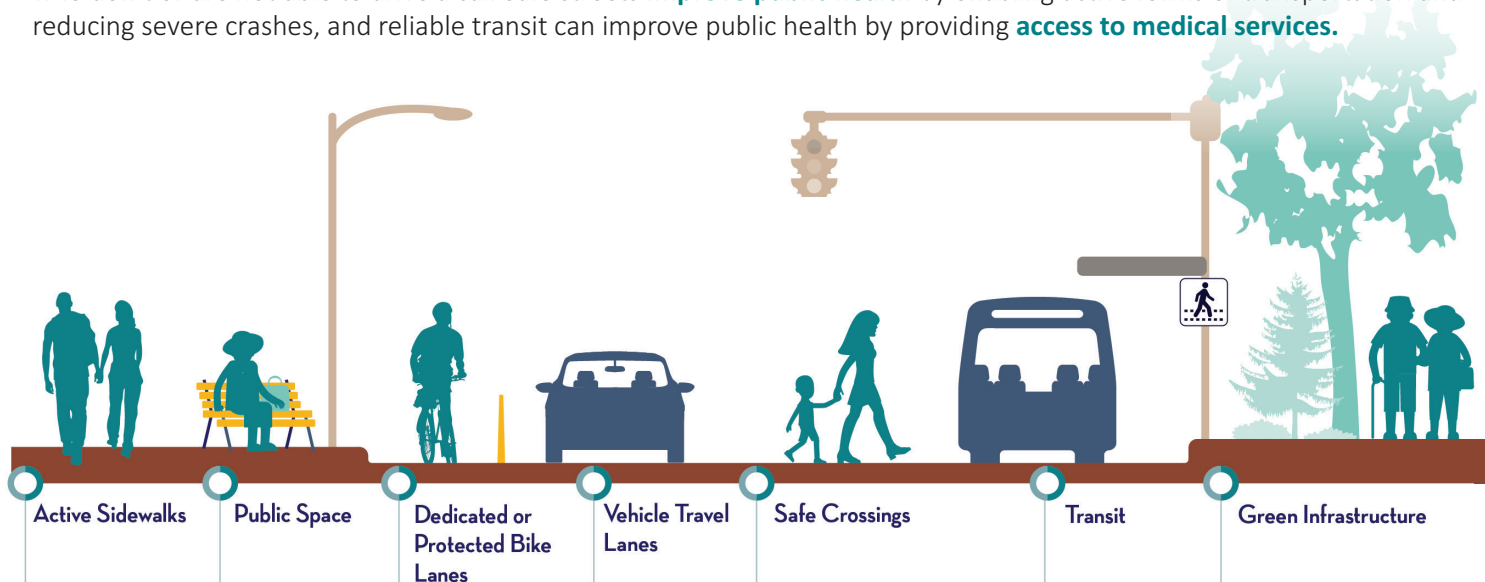


SOCIAL EQUITY

Everyone deserves the opportunity to achieve their full potential regardless of where they live, how they travel, who they are, or what social position they occupy. An equitable transportation network offers **convenient and affordable access to jobs, medical services, education, grocery shopping, and social/recreational activities.**

SPOTLIGHT ON COMPLETE STREETS

Complete Streets enable safe and comfortable transportation using modes other than single occupant vehicles, thereby offering an opportunity to **reduce transportation-related greenhouse gas emissions**. By planning and designing for different modes, Complete Streets provide a more **equitable system that doesn't penalize people** with unsafe conditions who don't or are not able to drive a car. Safe streets **improve public health** by enabling active forms of transportation and reducing severe crashes, and reliable transit can improve public health by providing **access to medical services**.



STRATEGIES

Examples of strategies identified through our scenario planning workshop include:

- Develop and implement **EDUCATION CAMPAIGNS** as new transportation technologies are introduced to ensure equal opportunities and understanding.
- Develop public/private partnerships to **SUBSIDIZE MOBILITY-AS-A-SERVICE** for low-income populations.
- **ENGAGE YOUTH** to help develop a transportation system that they want and will keep them in Santa Fe to strengthen the economy and **BUILD A SYSTEM FOR FUTURE USERS.**

MAKING CHOICES

Current funding realities indicate that not all desired projects will be built within this plan's 25-year time horizon. The MTP explores future transportation technologies to inform strategic actions and prioritizes transportation improvement projects in the region.

SCENARIO PLANNING: EMERGING TECHNOLOGIES

The Santa Fe MPO conducted scenario planning to better imagine the range of influence that disruptive and emerging technologies may have on the future of mobility in Santa Fe and to identify common themes and strategies. Participants explored the driving forces of **economic health** and **mobility-as-a-service**, which have the potential to serve as a platform for other technology trends such as electrification and driverless vehicle technologies .

PRIORITIZING PROJECTS

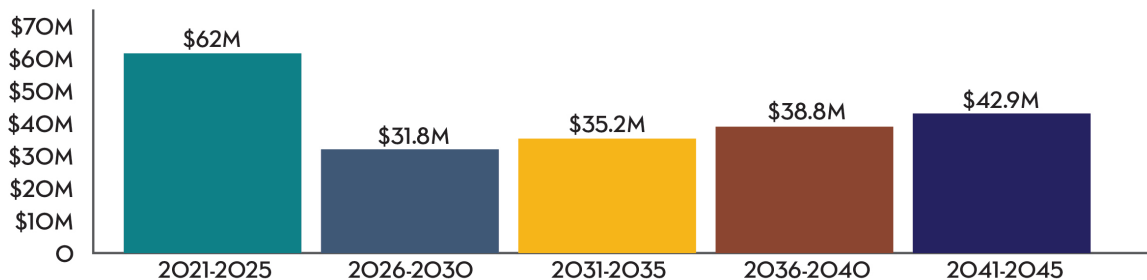
With limited funding available and an active community desiring context sensitive transportation improvements, the MTP prioritizes **projects that most effectively move our region's transportation system toward fulfilling our vision and achieving our goals.** The Regional Roadway system projects represent the region's needs over the next 25 years. Each project has been evaluated and prioritized based on criteria that stem from the nine MPO goals listed on page 2.

MOVING FORWARD

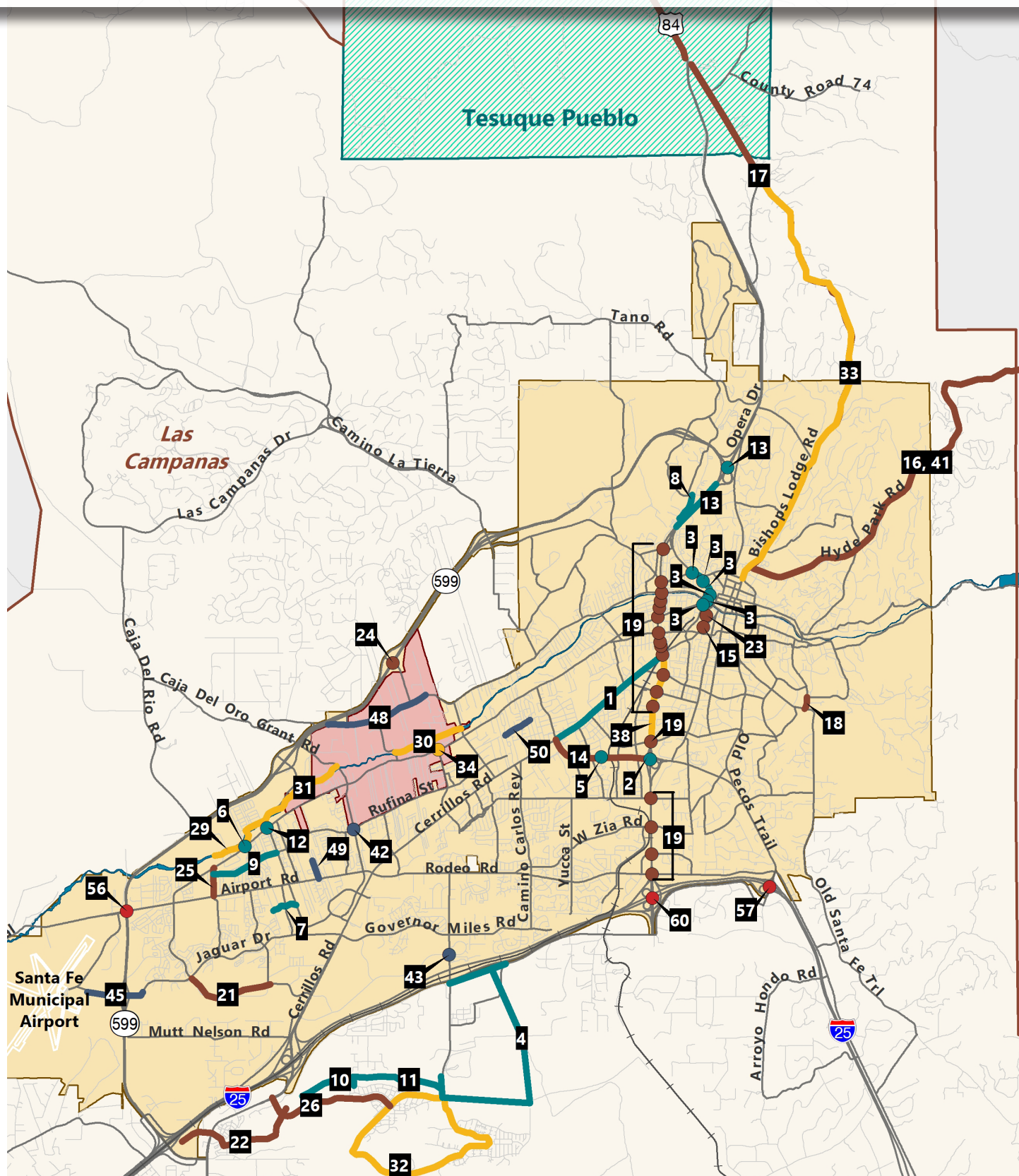
The Santa Fe MPO is committed to assisting its member agencies in advancing goals and implementing projects.

The chart below shows the Reasonably Expected Revenue Projections in 5-year increments for the life of the plan. These funding amounts are used to establish the Fiscally Constrained Plan, which includes regional roadway projects expected to be funded in the next 25 years, along with the priorities for transit, bicycle, and pedestrian travel modes.

REASONABLY EXPECTED REVENUE PROJECTIONS



FISCALLY CONSTRAINED PROJECTS



Legend

#	Project Rank	Projects By Year	2031 - 2035	Agua Fria Traditional Village	MPO Planning Area Boundary
●	Fiscally Constrained Projects	2020 - 2025	2036 - 2040	Santa Fe City Boundary	
		2026 - 2030	2041 - 2045		



STRATEGIES FOR SUCCESS

PERFORMANCE MEASURES The MTP details 18 performance measures that comply with federal requirements and align with state targets. They are focused on:

- Reducing serious injuries and fatalities
- Maintaining our roads and bridges in good condition
- Providing a reliable transportation system for people and freight movement
- Maintaining transit vehicles, equipment, and facilities in good condition
- Providing effective public transit customer service

IMPLEMENTATION STRATEGIES

The Santa Fe MTP identifies strategies to be implemented over the next five years by the SFMPO and the MPO member agencies to support achievement of the State's performance targets and the region's transportation goals. Examples of high-priority strategies the SFMPO will focus on include:

- Improve engagement with underserved communities by identifying and coordinating with active organizations and individuals
- Research and consider creative alternative funding sources, such as public/private partnerships
- Identify high crash locations in the MPO planning area (including a focus on pedestrian crashes) and assist member agencies in planning and funding improvements
- Review and refine all roadway projects to ensure they comply with the MPO's Complete Streets policy
- Identify multimodal network gaps and prioritize improvements
- Coordinate with local agencies to ensure land use planning requirements are conducive to pedestrian and bicycle travel
- Promote the creation of a low-stress network for bicyclists
- Support programs and projects that adapt to climate change scenarios including severe weather occurrences

