



My Name is Francis  
and this is my  
Santa Fe Street  
Story!



*A Santa Fe Transportation Adventure*

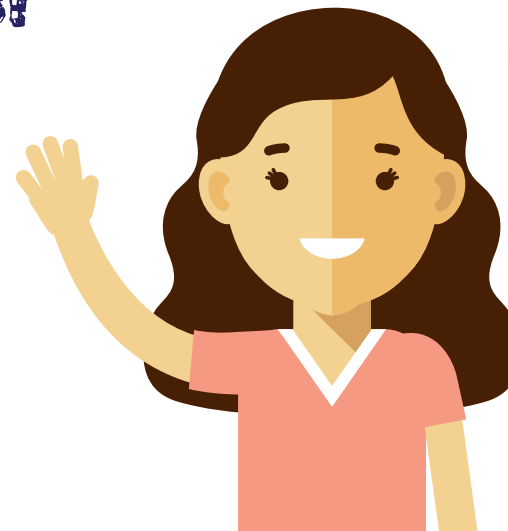
Prepared by:




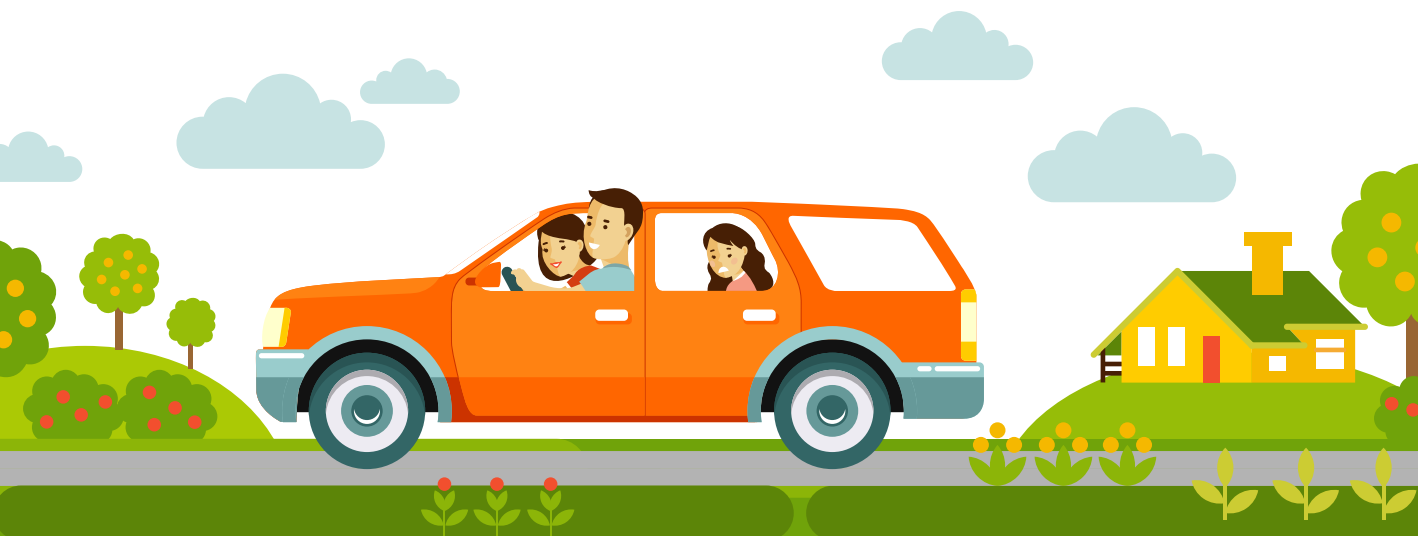


Hi there! My name is Francis; what's yours? It's a beautiful sunny Saturday in Santa Fe, New Mexico and I can't wait to get outside and ride my bike. We can get to the River Trail, Frenchy's Field, and the Acequia Trail just by walking or biking from my house. Today I'm running lots of errands with my parents. Will you come with me? I'm sure we'll have a fun adventure.

Roll over   and click on the   
for transportation adventures!



 Mode of  
transport for  
kids || types  
of transportation  
|| Transportation  
video for kids

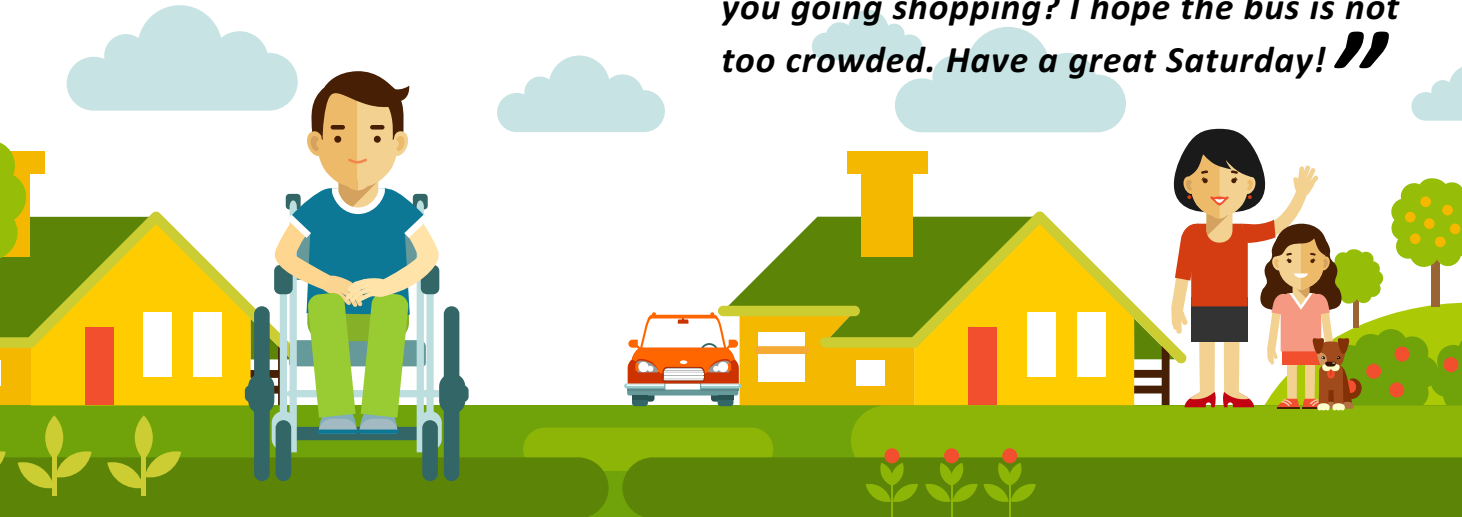


Sometimes we ride the bus which is more fun, but we need the car today because we have different places to go, like the Plaza and the GCCC for swimming lessons. My dad is making enchiladas for dinner so we're getting groceries from the Farmer's Market!



I hear my mom calling so we'd better head out to the car. Oh look- there's my neighbor, George!

***"Hi George! How are you today? I'm going to run some errands with my parents. Are you going shopping? I hope the bus is not too crowded. Have a great Saturday!"***



George uses a wheelchair to get around town. People with disabilities sometimes face additional challenges when it comes to getting around, and it's really important for cities to make sure the streets and sidewalks are safe for them. George told me he's glad that so many of the buses in town have lifts on them so he can get on and go to the store and to his doctors' appointments.

**Try and match these roadway signs with their meanings.**



Sharrow: Share Road with Bicycles



Entering Roundabout



Yields to Oncoming Traffic



No U-turn



Two-way Traffic



Stop Light Ahead



School Crossing



Road Slippery When Wet

Handicapped Parking Only



Watch for Aliens and Cows in Road



Railway Crossing



Santa Fe River Trail Wayfinding



Santa Fe Trails Bus Stop



No Left Turn







Our first stop today is La Fonda Hotel near the Plaza, where my mom works.



We live on Agua Fria near Frenchy's Field. My mom usually takes the bus to work and my dad takes the Rail Runner Express Train to Albuquerque. How do your parents get to work? Can they walk or ride a bus?

Spot the 10 Differences in these two bus stop paintings:



Painting by local artist: Leah Saulnier





We can get some ice cream while Mom goes to her office! it's crowded around the Plaza! Let's be careful opening our doors- we don't want to hit someone and drivers may be distracted. That's why we always use the crosswalks here and look before crossing the streets.

Oh look- I see a lady using a white cane. She is pushing the buttons on the crossing post so she can hear when it is safe to cross- do you hear it beeping? The sound changes when the traffic lights change.

Is there anything better than walking through the shady Plaza with an ice cream cone? I sure don't think so! What do you like about the Plaza? I see mom coming this way, so we better finish up. We can all walk back to the car together and head to the next stop!



# Plaza Word Search

c y s h r c k o n x b i h u e  
v e c o u e i n w h p i p j n  
v z y v s c w d g e z w v x i  
t z x s e g c d n b w r k c n  
u g x x h e e s i o n t i p p  
l h a c c s y t k d v f i m i  
j y p q n t w b r f m t a m e  
u s w m e o n y a n j r h a f  
c p c o b r j r p b t a s k z  
b c j s x e z s b m r z r m y  
f k l a w s s o r c a a y b z  
q e z i c u t h s x f l g t v  
d h e z x m b p w t f p s g t  
f n q h p c p q v t i d r i h  
n y f w z p h o q w c x w g z

benches  
crosswalk  
noise  
parking  
plaza  
ramp  
stores  
traffic

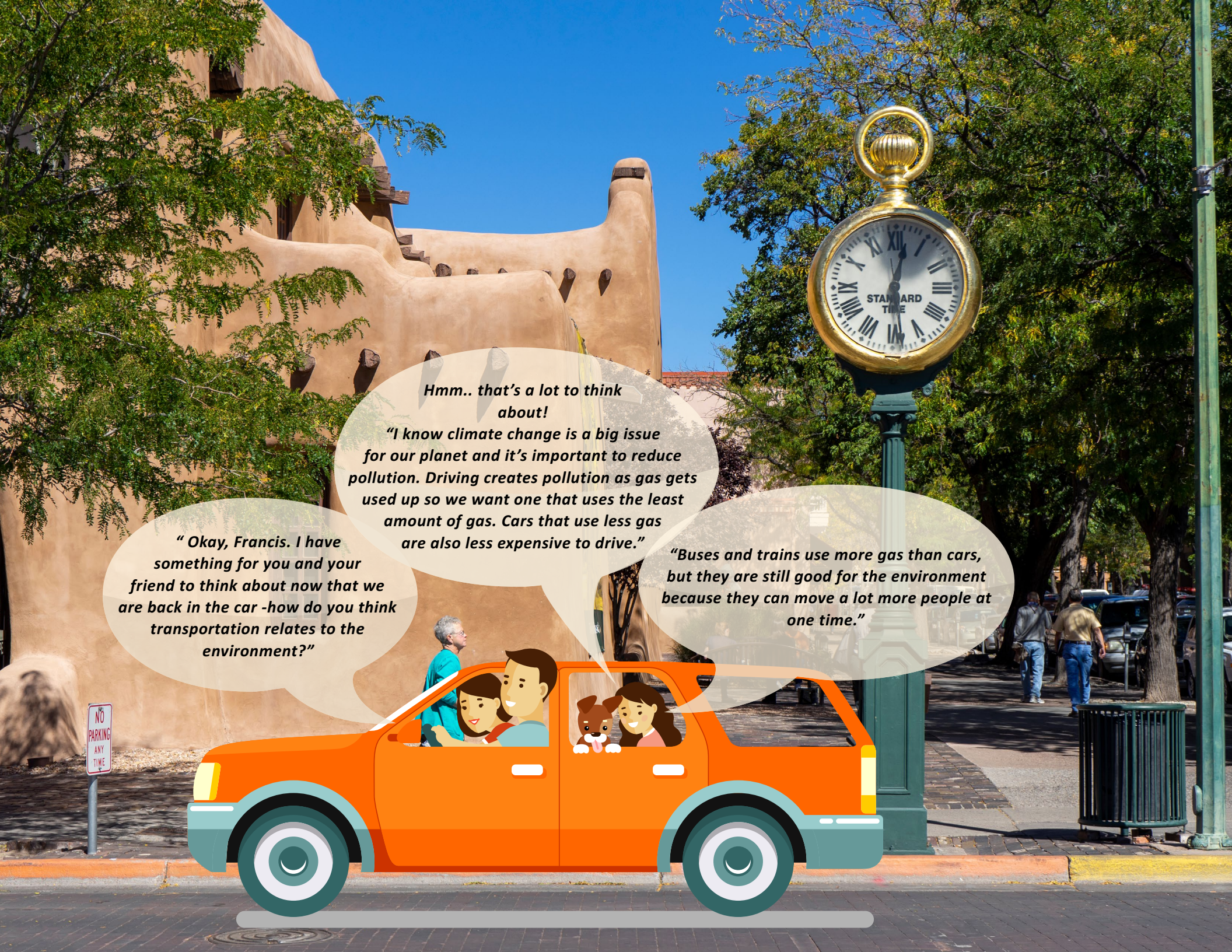


**The Bicycle Thief (Short Film)**

**Find the hidden items: bracelets, pots, doll, horse**







*Hmm.. that's a lot to think about!*

*"I know climate change is a big issue for our planet and it's important to reduce pollution. Driving creates pollution as gas gets used up so we want one that uses the least amount of gas. Cars that use less gas are also less expensive to drive."*

*"Okay, Francis. I have something for you and your friend to think about now that we are back in the car -how do you think transportation relates to the environment?"*

*"Buses and trains use more gas than cars, but they are still good for the environment because they can move a lot more people at one time."*

NO  
PARKING  
ANY  
TIME



Santa Fe has several modern roundabout intersections. Can you tell where this one is located? My Dad likes to go through roundabouts and thinks it's fun and safer than intersections with traffic lights. My mom doesn't like them so much. What do you think about roundabouts, do you have one near you?

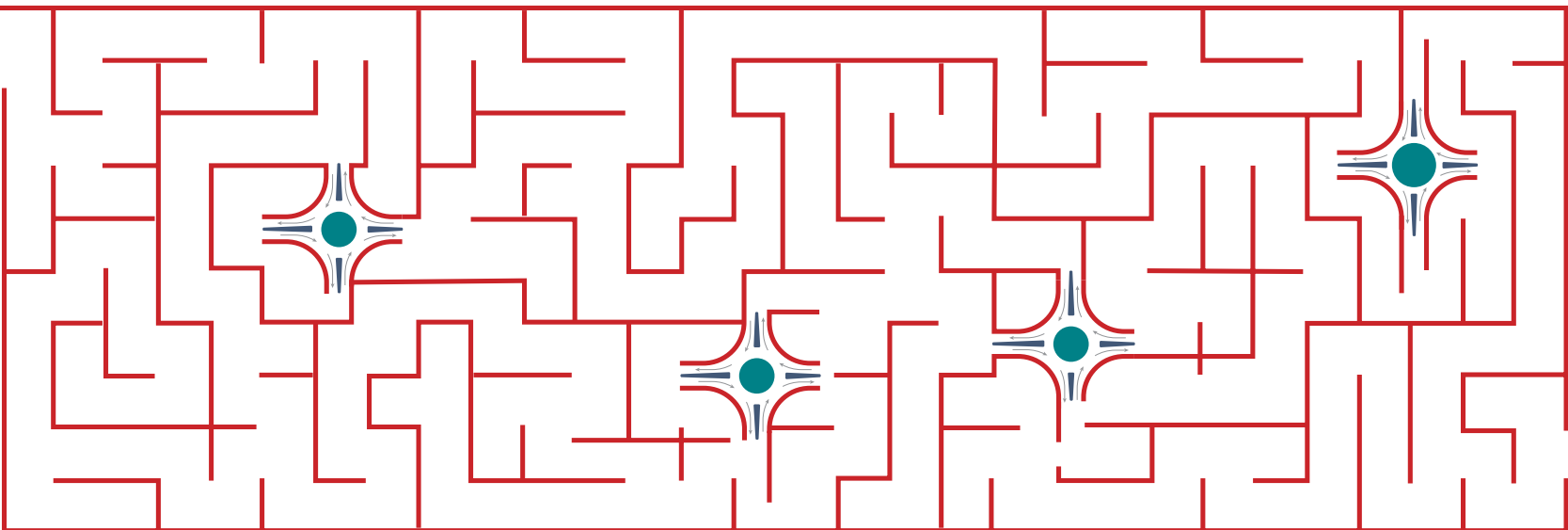


## 125 Modern Roundabouts:

A modern roundabout is a circular intersection where drivers and bicyclists travel counterclockwise around a center island. There are no traffic signals or stop signs in a modern roundabout.

## A Roundabout Maze!

*Help Francis get to the Railyard while navigating through the roundabout!*







Oh good, we are here! Now I can see how all of the people and cars have to be careful getting around each other. There is so much fresh and yummy food around that it's hard to decide where to go first, but I know my dad will head straight for one of the green chile stands. While they are doing their shopping, why don't we go find some good local treats to eat.



Have you ever thought about how lucky we are to have farmers nearby who can bring us fresh food? My teacher says it's called "locally sourced food" and is fresher because it doesn't have to come from some far-away place. That saves on transportation costs and pollution. Imagine a refrigerator truck driving all the way from Washington state to bring us apples – that would create a lot of pollution! We can get fresh apples and chile from Chimayo; they are more delicious and better for the environment.



Big vehicles like trucks and buses don't always get great mileage but they are important. Trucks are vital for our community because they transport all our essential needs to stores and homes, and buses have an advantage that cars and trucks can't offer – they can transport more people.

*We learned about "Green Energy" in school and how we can power our cars, bikes, trucks and even buses with electricity that comes from renewable resources such as solar and wind energy. We found out that the City of Santa Fe buses, garbage, and recycle trucks run on natural gas which is cleaner than gasoline! Can you think of ways our community uses green energy?"*

*"I love the clean and fresh air of Santa Fe, but my friends from school and I are worried about climate change. "*



## Environmental Word Search

k	g	b	d	b	t	f	f	t	l	d	m	t	j	z
u	h	j	t	n	c	l	f	r	n	k	z	u	w	c
v	e	l	a	l	k	z	k	s	l	q	u	s	l	e
i	a	k	p	u	s	e	d	s	v	u	k	r	r	m
v	l	c	i	r	t	c	e	l	e	b	r	o	c	i
z	t	u	d	f	e	x	e	r	c	i	s	e	h	s
c	h	r	j	y	z	m	m	y	a	k	i	c	x	s
n	l	l	n	e	d	p	t	p	n	o	o	i	d	i
s	g	s	p	n	u	u	t	o	a	e	v	d	m	o
z	o	n	o	a	r	s	n	c	n	q	e	t	x	n
a	r	t	l	e	q	b	r	a	f	o	g	r	t	s
x	b	l	l	l	s	n	w	a	h	e	b	l	g	j
x	i	u	u	c	e	o	k	m	g	i	z	r	y	c
b	z	n	t	f	j	p	d	k	x	o	o	r	l	b
x	p	p	e	y	b	a	k	g	g	x	x	i	x	r

green  
electric  
emissions  
clean  
pollute  
air  
health  
exercise

ElectroMobility





We are headed to the Food Depot now, where my dad has to drop some donations off. It's on Siler, and we'll take Cerrillos to get there because we need to get gas first. It's the busiest street in Santa Fe and has so many trucks. Trucks are vital for our community because they transport all our essential needs to stores and homes, but I'm glad we don't live too close to a big street with a lot of them driving by. Besides all of the trucks, noise, and fumes, Cerrillos is not so comfortable for biking or walking.

## What is your ideal Street?

*Please write out 6 of your favorite street features you learned from Francis and the videos.*

---

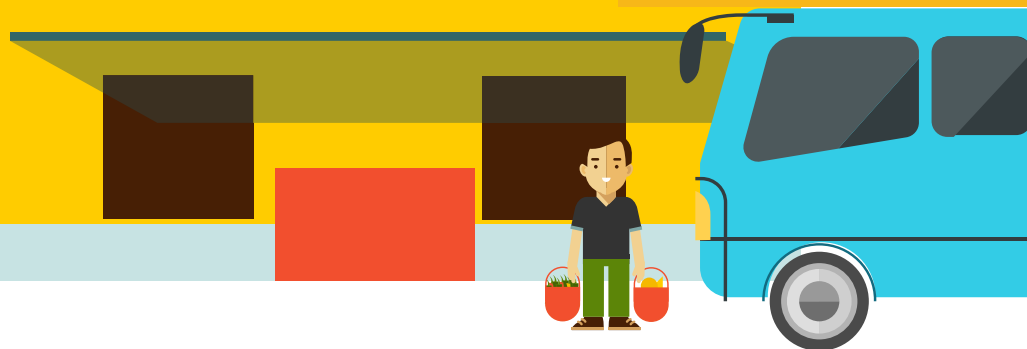
---

---

---

---

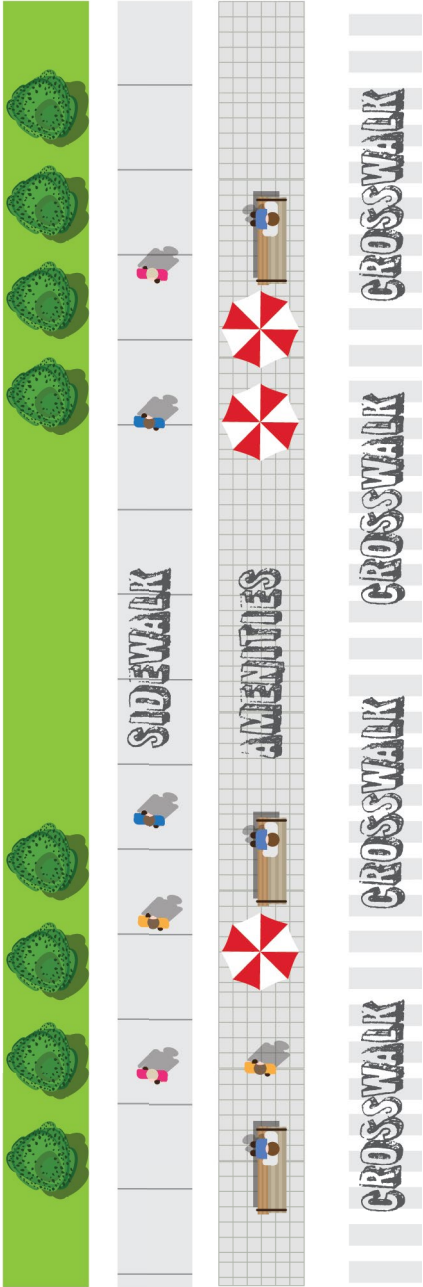
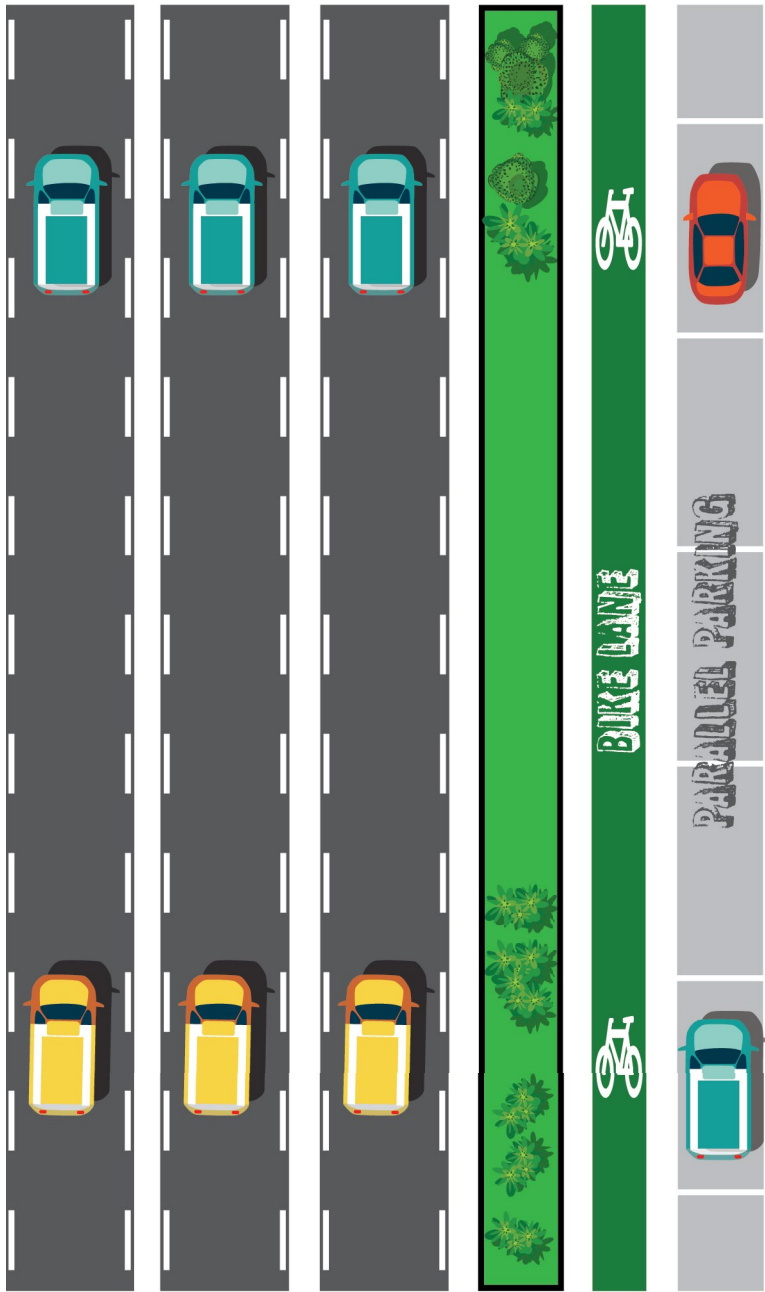
---



I see the Food Depot up ahead – I wonder if there is a bus stop by the Food Depot for the folks who don't have cars. Siler isn't as busy as Cerrillos, but there is still a lot of traffic and I sure wouldn't want to walk around here trying to carry my groceries home. Some of the sidewalks are missing, there is no shade, and it all seems so dusty. Let's be on our way and get to the Genoveva Chaves Community Center!



Cut out the road pieces to make your own street! Use chalk outside to draw your own Traffic Garden and practice with your bike or on foot!





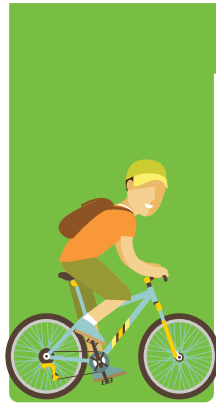


*On our way to the Food Depot we make a special drive past Meow Wolf to see the giant robot statue – such a weird and fun place! Meow Wolf used to be a bowling alley and the parking lot is huge. This reminds me of my school in the morning and afternoon when there are buses and cars everywhere, all trying pick up or drop off kids safely. I usually bike or walk to school because it's more fun than being driven by my parents. Some streets around schools aren't safe for biking and walking, though, so it's important to always be careful and to talk to your parents about the best way to get to your school.*



## Lets get to School Safely!

*Draw in the different elements (stop signs, crosswalks, etc.) Francis and her classmates can use get to school safely.*







When I go for a walk or a bike ride, I don't create any emissions at all! Bike rides and walking are also good for your health because they give you exercise. More and more I am seeing people riding electric bicycles, scooters, and even skateboards – all more fun than riding in a car, and better for the environment! Careful transportation choices can make a real difference to the environment.



Let's see how my Mom and Dad are doing with their shopping. They both have their reusable bags full of vegetables, cheese, and fruits so it's definitely going to be a good dinner tonight! My dad uses local green chiles to make the best enchiladas; my mouth is watering just thinking about them.



*Next time you go to the grocery store or your parents bring home groceries, find out where the food was grown or made. Which food came from the place farthest away? Which food came from the closest place? Think about what time of year it is. Do we get foods from farther away at different times of the year?*

**Which of your favorite foods are grown nearby?**





Before we get to cooking (and eating!), there is one more stop – I am going to swimming lessons at the Genoveva Chavez Community Center. My parents are taking me to the ocean for the first time and I want to be able to swim with the dolphins! I love to try new things like swimming and lessons will help me be safer in the water.

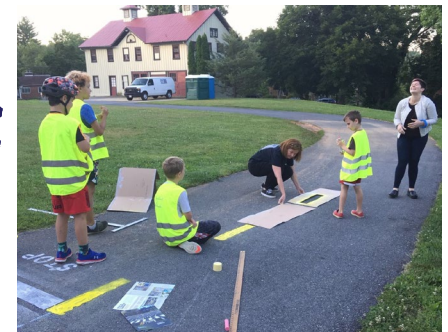


The thought of driving someday makes me nervous. It seems like there are so many things drivers have to pay attention to in the car and people can get really hurt if there is a crash. I wonder how I will learn how to drive safely. Are you looking forward to driving?

Traffic rules are important and my parents are making a *traffic garden*, or a small roadway to practice safe biking on roads. It's something my dad is looking forward to helping me design and draw in chalk on our driveway, and something your family could do too!



Learn more about  
traffic gardens







Swimming was fun and we are headed home! Mom said we could go for that bike ride I wanted this morning while Dad makes his enchiladas. We live close to Frenchy's Field and the River Trail, so we go there for walks and rides all the time. There are two bus stops at Frenchy's so you can put your bike on the bus to get there. Did you know kids ride free on the Santa Fe Trail's buses?

## Whose Santa Fe wheels are these?

Can you figure out what wheels go with what vehicle? Draw a line from each wheel to the correct vehicle

My wheels have been around since 1817 and help you feel the sun on your arms and the wind in your hair.



My wheels carry are called a "Steel Horse" by some.



My wheels carry Booster lines, Deluge hoses and Attack hoses.



My wheels carry the equivalent of 36 cars when filled with students.



My wheels carry cylindrical bores which hold tiny spinning metal spheres. This helps people do gnarly "ollies" in the parking lot.



My wheels carry a vehicle called an "interceptor" or "cruiser".

My wheels carry a wheelchair lift.



My wheels can support 120 tons or the equivalent of 30 adult elephants.



My wheels take peoples, skies and mountain bikes up to the Santa Fe Ski Basin.

Did you know the Santa Fe Public School Transportation Department consists of over 80 bus routes and in the United States every year approximately 480,000 yellow school buses carry 25 million children to and from school every weekday which is 2.5 times the size of all other forms of mass transportation combined. (National Association for Pupil Transportation)



It's nice and cool now that the sun is setting. Look at all the people out on the trail! I know that on busy trails with people walking and biking, it's important to not pedal too fast. We go even slower at curves and bridges where it's harder to see ahead. One time I saw a coyote on the trail – that was pretty special! I wish my eyes could glow in the dark like the coyote's but since they don't, I'll turn on my bike light to stay visible. The streets and trails have to be safe for all of us!

**Print and color**

**Do you know  
where this trail  
underpass is?**





My mom says we should turn around, dinner is ready. I enjoyed your company today. We've had a transportation adventure! We talked about many different modes of transportation all suited to different needs. There are many different kinds of streets and there are many things besides just vehicles and streets, like schools, parking areas, walking areas, and the environment to think about. Our community must have to plan for all of them. Most importantly, we noticed that transportation is about helping people move around and get the things they need, so it has to work for all people all over the city.



## An Animated History of Transportation

### Word Jumble!

*Unscramble the letters in each word to spell out different modes of transportation and then unscramble all of the underlined letters to spell out what we've been learning about today.*

U   B   S   O   C   E   T   O   R   S   R   C   A   R   I   N   A   T  
\_\_\_\_\_

K   I   B   E   R   U   T   K   C   N   L   E   P   A   L   W   A   K  
\_\_\_\_\_

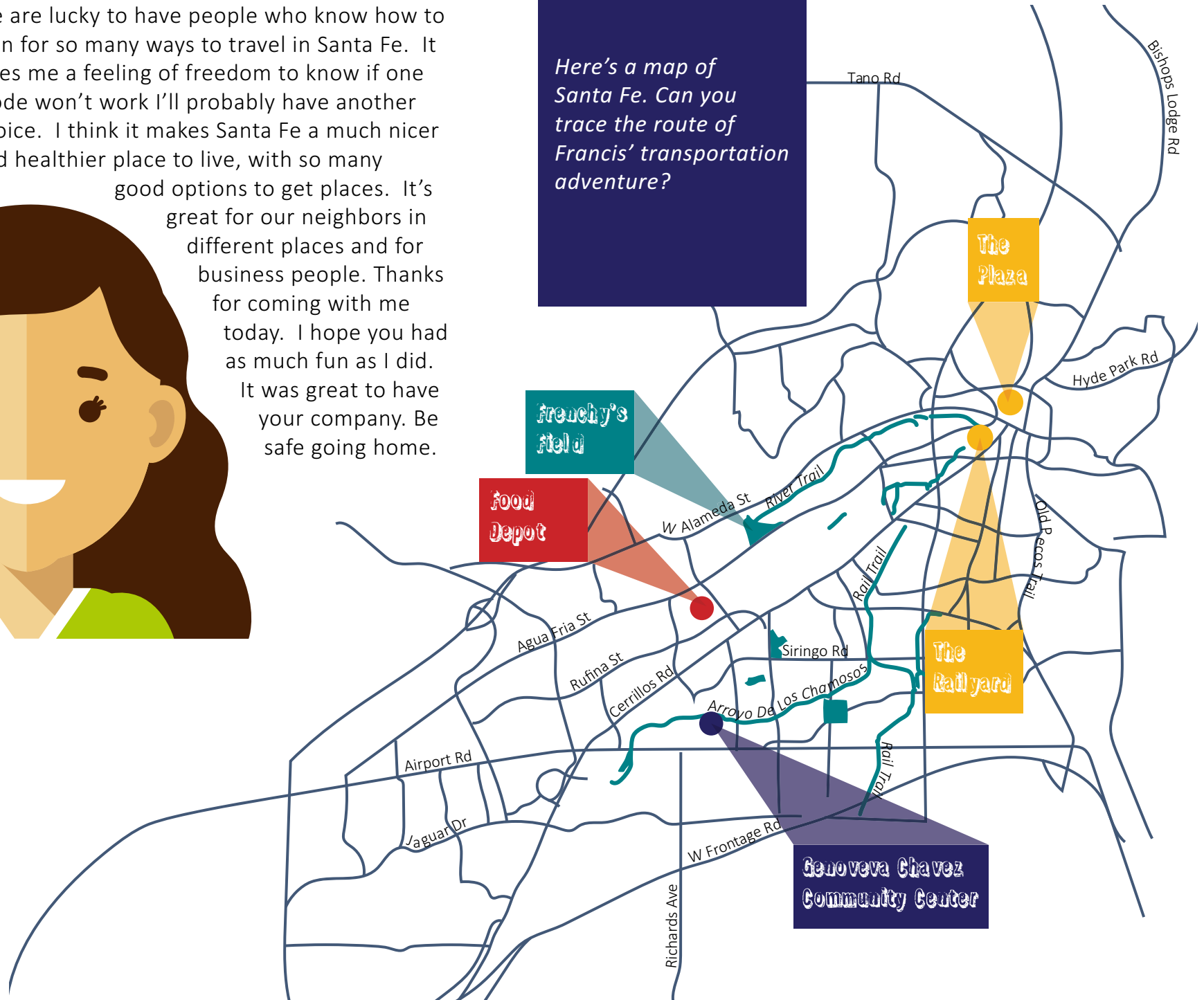
\_\_\_\_\_



We are lucky to have people who know how to plan for so many ways to travel in Santa Fe. It gives me a feeling of freedom to know if one mode won't work I'll probably have another choice. I think it makes Santa Fe a much nicer and healthier place to live, with so many good options to get places. It's great for our neighbors in different places and for business people. Thanks for coming with me today. I hope you had as much fun as I did. It was great to have your company. Be safe going home.



*Here's a map of Santa Fe. Can you trace the route of Francis' transportation adventure?*







**PO Box 909, Santa Fe, NM**

**<https://santafempo.org>**

**PO Box 909  
Santa Fe, NM**

*Tell us your street story and mail this postcard  
to the MPO so they may share your story on  
their website.*

Place  
Stamp  
Here

**Santa Fe MPO  
PO Box 909  
Santa Fe, NM**

